



LEKSON
VIDEO

The World moves fast ...

Be prepared with
Lekson Surveillance.

2007 CATALOG

LCD Monitors
Megapixel Monitors
Digital Video Recorders
Intelligent Public View Monitors
Public View Monitors

www.leksonvideo.com

1-888-LEKSON1

Table of Contents



CCTV LCD Monitors3
 CCTV LCD Monitor Quick Reference Guide.....4
 Platinum Series Monitors (KLM)5
 Gold Series Monitors (JLM).....11

Megapixel Monitors29
 Megapixel Monitor Quick Reference Guide 30
 MPLM Series 31

Digital Video Recorders37
 DVR Quick Reference Guide.....38
 L Series.....39
 SE Series45
 P Series.....47
 C Series.....49
 Mobile DVR Series.....51

Intelligent Public View Monitors53
 Public View Monitor Quick Reference Guide.....54
 Intelligent Public View Monitors.....55
 IP Enabled Intelligent Public View Monitors.....69

Public View Monitors79
 Public View Monitor Quick Reference Guide.....80
 Ch Series.....81
 ST Series.....87

Terms and Conditions99
Credit Application101
OrderForm.....103

1-888-LEKSON1
 Fax: 1-801-227-7819
 3214 North University Ave #528
 Provo, UT 84604
 www.leksonvideo.com



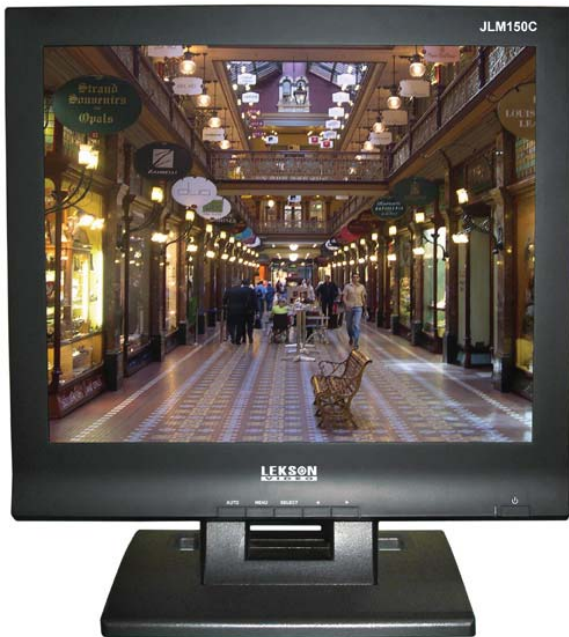
CCTV LCD Monitors



Find the ideal monitor for your security application by choosing from the Platinum or Gold Series of Lekson Video LCD monitors. Both series of monitors have been designed and built specifically for security applications.

The Platinum Series is designed to handle more complex CCTV setups with multiple inputs, looping outputs, and one touch front panel controls for easy switching between the inputs. Features such as a 3-D Comb Filter, advanced image scaling, and a quick response time combine with the monitor's high resolution, brightness, and contrast ratio to provide a clear, reliable image.

The Gold Series is designed for security applications that require one composite connection. Lower your cost by buying a monitor that has the inputs and outputs you need while maintaining excellent picture quality.



Monitor Quick Reference Guide... page 4

Platinum Series Monitors

KLM150L 15" TFT LCD Monitor... page 5

KLM170L 17" TFT LCD Monitor... page 7

KLM190L 19" TFT LCD Monitor... page 9

Gold Series Monitors

JLM150C 15" TFT LCD Monitor... page 11

JLM170C 17" TFT LCD Monitor... page 13

JLM190C 19" TFT LCD Monitor... page 15

JLM210C 20.1" TFT LCD Monitor... page 17

JLM230C 23" TFT LCD Monitor... page 19

JLM260C 26" TFT LCD Monitor... page 21

JLM320C 32" TFT LCD Monitor... page 23

JLM370C 37" TFT LCD Monitor... page 25

JLM420C 42" TFT LCD Monitor... page 27

LEKSON
VIDEO

CCTV LCD Monitors Quick Reference Guide

	Panel Size	Inputs/Outputs	Resolution	Contrast Ratio	Brightness	Aspect Ratio	Viewing Angle	Response Time	Comb Filter
KLM150L	15"	2 BNC Looping, 1 VGA, 1 S-Video, 2 Audio Looping	1024 x 768	400:1	450 cd/m ²	4:3	H: 130 V:100	12 ms	YES
KLM170L	17"	2 BNC Looping, 1 VGA, 1 S-Video, 2 Audio Looping	1280 x 1024	700:1	300 cd/m ²	5:4	H: 176 V:176	8 ms	YES
KLM190L	19"	2 BNC Looping, 1 VGA, 1 S-Video, 2 Audio Looping	1280 x 1024	700:1	300 cd/m ²	5:4	H: 135 V:150	8 ms	YES
JLM150C	15"	1 BNC Looping, 1 VGA, 1 S-Video, 1 Audio	1024 x 768	450:1	250 cd/m ²	4:3	H: 130 V:110	13 ms	YES
JLM170C	17"	1 BNC Looping, 1 VGA, 1 S-Video, 1 Audio	1280 x 1024	700:1	300 cd/m ²	5:4	H: 150 V:135	10 ms	YES
JLM190C	19"	1 BNC Looping, 1 VGA, 1 S-Video, 2 Audio	1280 x 1024	700:1	300 cd/m ²	5:4	H: 150 V:135	9 ms	YES
JLM201C	20.1"	2 BNC Looping, 1 VGA, 1 S-Video, 2 Audio Looping	800 x 600	600:1	450 cd/m ²	4:3	H: 160 V:120	16 ms	YES
JLM230C	23"	2 BNC Looping, 1 VGA, 1 S-Video, 2 Audio Looping	1366 x 768	1200:1	450 cd/m ²	16:9	H: 178 V:178	25 ms	YES
JLM260C	26"	2 BNC Looping, 1 VGA, 1 S-Video, 2 Audio Looping	1366x 768	800:1	500 cd/m ²	16:9	H: 176 V:176	20 ms	YES
JLM320C	32"	2 BNC Looping, 1 VGA, 1 S-Video, 2 Audio Looping	1366 x 768	1600:1	500 cd/m ²	16:9	H: 178 V:178	18 ms	YES
JLM360C	36"	2 BNC Looping, 1 VGA, 1 S-Video, 2 Audio Looping	1366 x 768	1600:1	500 cd/m ²	16:9	H: 178 V:178	18 ms	YES
JLM420C	42"	2 BNC Looping, 1 VGA, 1 S-Video, 2 Audio Looping	1366x 768	800:1	500 cd/m ²	16:9	H: 178 V:178	18 ms	YES



Call 1-888-LEKSON1 to order www.leksonvideo.com

Special Features include:

Designed for use in CCTV applications

High Resolution: 1024 x 768 (XGA)

Horizontal Resolution 540 TV lines

Multiple inputs: 2 Composite BNC, VGA, S-Video

2 BNC Looping Outputs

Brightness of 450 cd/m²

Contrast of 400:1

Advanced Image Scaling

3-D Comb Filter

2 Audio Inputs and 2 Audio Looping Outputs

19" Rack Mountable

VESA Wall-Mount Compatible (100mm x 100mm)

Built-in Power Adapter

15" TFT LCD Monitor



Back



Side

System

Panel Size	15" LCD TFT (Thin-Film Transistor)
Resolution	1024 x 768 (SXGA)
Horizontal Resolution	540 TV Lines
Contrast Rate	400:1
Brightness	450 cd/m ²
Aspect Ratio	4:3
View Angle	H : 130, V :100
Response Time	12 ms
Video Signal	Composite signal 0.7 Vp-p, 75 Ω AV :1 Vp-p (0.7V video + 0.3V sync), 75Ω
Video Mode	NTSC/PAL Auto Scanning
Scan Frequency	H:30K~60KHz, V:56~75Hz
3D Comb Filter	Yes
Regulatory Approvals	cUL, CE class B, FCC-B

Operation

Front Pannel Controls	Menu, Up, Down, Volumne up/down, Tint, Color, Bright, Contrast
Indicators	Power On LED, Video Source (V1, V2, S-Video, PC/DVI)
OSD Control	Color Temp, Utility, OSD, Language (6)
OSD Language	English, Francais, Deutsch, Espanol, Danish, Italiano

Connector

Input	D-Sub x 1 (0.7 Vp-p), DVI (option) Video Input (BNC) x 2 Video Input (S-Video) x 1 Audio Input (RCA) x 2
Output	Video Looping Out (BNC) x 2 Audio Looping Out (RCA) x 2

Mechanical & Electric Design

Glass Frame	Yes
Audio Speaker	0.5W x 1
Looping 75	Yes
VESA Spec.	100mm x 100mm
Frame Material	Plastic
Back Material	Plastic
Base Material	Plastic
Power	AC 100 - 240V, 50/60Hz Auto Switchable
Power Consumption	30 Watts, Standby 5 Watts
Unit Dimension (W x H x D)	14.25" (L) x 12.75 (H) x 2.5" (W) (362 x 324 x 65mm)
Color	Black

Accessory

Power Cord	1 set
15 pin D-Sub Cable	1 set

*Design and specifications are subject to change without notice

Lekson Video

3214 North University Ave. #528, Provo, UT 84604

Tel: 1-888-LEKSON1 | Fax: (801) 227-7819

www.leksonvideo.com

Special Features include:

Designed for use in CCTV applications

High Resolution: 1280 x 1024 (SXGA)

Horizontal Resolution 600 TV Lines

Multiple inputs: 2 Composite BNC, VGA, S-Video

2 BNC Looping Outputs

Brightness of 300 cd/m²

Contrast of 700:1

Advanced Image Scaling

3-D Comb Filter

2 Audio Inputs and 2 Audio Looping Outputs

19" Rack Mountable

VESA Wall-Mount Compatible (100mm x 100mm)

Built-in Power Adapter

17" TFT LCD Monitor



Back



Side

**System**

Panel Size	17" LCD TFT (Thin-Film Transistor)
Resolution	1280 x 1024 (SXGA)
Horizontal Resolution	600 TV Lines
Contrast Rate	700:1
Brightness	300 cd/m ²
Aspect Ratio	5:4
View Angle	H : 176, V :176
Response Time	8 ms
Video Signal	Composite signal 0.5~2 Vp-p/75Ω , Y:1 Vp-p, C:0.3 Vp-p
Video Mode	NTSC/PAL Auto Scanning
Scan Frequency	H:30K~60KHz, V:56~75Hz
3D Comb Filter	Yes
Regulatory Approvals	cUL, CE class B, FCC-B

Operation

Front Pannel Controls	Menu, Up, Down, Volumne up/down, Tint, Color, Bright, Contrast
Indicators	Power On LED, Video Source (V1, V2, S-Video, PC/DVI)
OSD Control	Color Temp, Utility, OSD, Language (6)
OSD Language	English, Francais, Deutsch, Espanol, Danish, Italiano

Connector

Input	D-Sub x 1(0.7 Vp-p), DVI (option) Video Input (BNC) x 2 Video Input (S-Video) x 1 Audio Input (RCA) x 2
Output	Video Looping Out (BNC) x 2 Audio Looping Out (RCA) x 2

Mechanical & Electric Design

Glass Frame	Yes
Audio Speaker	0.5W x 1
Looping 75	Yes
VESA Spec.	100mm x 100mm
Frame Material	Plastic
Back Material	Plastic
Base Material	Plastic
Power	AC 100 - 240V, 50/60Hz Auto Switchable
Power Consumption	30 Watts, Standby 5 Watts
Unit Dimension (W x H x D)	15.25" (L) x 14.25" (H) x 2.5" (W) (390 x 366 x 65mm)
Color	Black

Accessory

Power Cord	1 set
15 pin D-Sub Cable	1 set

*Design and specifications are subject to change without notice

Lekson Video

3214 North University Ave. #528, Provo, UT 84604

Tel: 1-888-LEKSON1 | Fax: (801) 227-7819

www.leksonvideo.com

Special Features include:

Designed for use in CCTV applications

High Resolution: 1280 x 1024 (SXGA)

Horizontal Resolution 600 TV Lines

Multiple inputs: 2 Composite BNC, VGA, S-Video

2 BNC Looping Outputs

Brightness of 300 cd/m²

Contrast of 700:1

Advanced Image Scaling

3-D Comb Filter

2 Audio Inputs and 2 Audio Looping Outputs

19" Rack Mountable

VESA Wall-Mount Compatible (100mm x 100mm)

Built-in Power Adapter

19" TFT LCD Monitor



Back



Side

**System**

Panel Size	19" LCD TFT (Thin-Film Transistor)
Resolution	1280 x 1024 (SXGA)
Horizontal Resolution	600 TV Lines
Contrast Rate	700:1
Brightness	300 cd/m ²
Aspect Ratio	5:4
View Angle	H : 135, V :150
Response Time	8 ms
Video Signal	Composite signal 0.5~2 Vp-p/75 Ω , Y:1 Vp-p, C:0.3 Vp-p
Video Mode	NTSC/PAL Auto Scanning
Scan Frequency	H:30K~60KHz, V:56~75Hz
3D Comb Filter	Yes
Regulatory Approvals	cUL, CE class B, FCC-B

Operation

Front Pannel Controls	Menu, Up, Down, Volumne up/down, Tint, Color, Bright, Contrast
Indicators	Power On LED, Video Source (V1, V2, S-Video, PC/DVI)
OSD Control	Color Temp, Utility, OSD, Language (6)
OSD Language	English, Francais, Deutsch, Espanol, Danish, Italiano

Connector

Input	D-Sub x 1 (0.7 Vp-p), DVI (option) Video Input (BNC) x 2 Video Input (S-Video) x 1 Audio Input (RCA) x 2
Output	Video Looping Out (BNC) x 2 Audio Looping Out (RCA) x 2

Mechanical & Electric Design

Glass Frame	Yes
Audio Speaker	0.5W x 1
Looping 75	Yes
VESA Spec.	100mm x 100mm
Frame Material	Plastic
Back Material	Plastic
Base Material	Plastic
Power	AC 100 - 240V, 50/60Hz Auto Switchable
Power Consumption	30 Watts, Standby 5 Watts
Unit Dimension (W x H x D)	17" (L) x 15" (H) x 2.5" (W) (432 x 381 x 64mm)
Color	Black

Accessory

Power Cord	1 set
15 pin D-Sub Cable	1 set

*Design and specifications are subject to change without notice

Lekson Video

3214 North University Ave. #528, Provo, UT 84604

Tel: 1-888-LEKSON1 | Fax: (801) 227-7819

www.leksonvideo.com

Special Features include:

High Resolution: 1024 x 768 (XGA)

BNC, VGA, S-Video

BNC Looping Output

Brightness of 250 cd²

Contrast of 450:1

Advanced Image Scaling

4H Comb Filter

Audio Input

19" Rack Mountable

VESA Wall-Mount Compatible
(100mm x 100mm)

15" TFT LCD Monitor



Side

**System**

Panel Size	15" LCD TFT
Resolution	1024 x 768(XGA)
Contrast Ratio	450 : 1
Brightness	250 cd ²
Aspect Ratio	4:3
View Angle	H : 130, V : 110
Response Time	13 ms
Video Signal	Composite signal 0.5~2 Vp-p/75Ω , Y:1 Vp-p, C:0.3 Vp-p
Video Mode	NTSC/PAL Auto Scanning
Scan Frequenc	H:30K~60KHz, V:56~75Hz
Regulatory Approvals	CE, FCC

Operation

Front Panner Controls	Menu, Up, Down, Volume up/down
Indicators	Power On LED
OSD Control	Color Temp, Utility, OSD, Language (5)
OSD Language	English, Francais, Deutsch, Espanol, Italiano

Connector

Input	D-Sub x 1 (0.7 Vp-p) Video Input (BNC) x 1 Video Input (S-Video) x 1 Audio Input (RCA) x 2
Output	Video Looping Out (BNC) x 1

Mechanical & Electric Design

Glass Frame	Optional
Audio Speaker	1W x 2
Looping 75	Yes
VESA Spec.	100mm x 100mm
Frame Material	Plastic
Back Material	Plastic
Base Material	Plastic
Power	DC 12V
Power Consumption	27 Watts, Standby 5 Watts
Unit Dimension (W x H x D)	18.5" x 20" x 8.25" (470mm x 507mm x 210mm)
Color	Black

Accessory

Power Cord	1 set
15 pin D-Sub Cable	1 set

*Design and specifications are subject to change without notice

Lekson Video

3214 North University Ave. #528, Provo, UT 84604

Tel: 1-888-LEKSON1 | Fax: (801) 227-7819

www.leksonvideo.com

Special Features include:

High Resolution: 1280 x 1024 (SXGA)

BNC, VGA, S-Video

BNC Looping Output

Brightness of 300 cd²

Contrast of 700:1

Advanced Image Scaling

4H Comb Filter

Audio Input

19" Rack Mountable

VESA Wall-Mount Compatible
(100mm x 100mm)

17" TFT LCD Monitor



Side

**System**

Panel Size	17" LCD TFT
Resolution	1280 x 1024(SXGA)
Contrast Ratio	700 : 1
Brightness	300 cd ²
Aspect Ratio	5:4
View Angle	H : 150, V : 135
Response Time	10 ms
Video Signal	Composite signal 0.5~2 Vp-p/75Ω , Y:1 Vp-p, C:0.3 Vp-p
Video Mode	NTSC/PAL Auto Scanning
Scan Frequenc	H:30K~60KHz, V:56~75Hz
Regulatory Approvals	CE, FCC

Operation

Front Panner Controls	Menu, Up, Down, Volume up/down
Indicators	Power On LED
OSD Control	Color Temp, Utility, OSD, Language (5)
OSD Language	English, Francais, Deutsch, Espanol, Italiano

Connector

Input	D-Sub x 1 (0.7 Vp-p) Video Input (BNC) x 1 Video Input (S-Video) x 1 Audio Input (RCA) x 2
Output	Video Looping Out (BNC) x 1

Mechanical & Electric Design

Glass Frame	Optional
Audio Speaker	1W x 2
Looping 75	Yes
VESA Spec.	100mm x 100mm
Frame Material	Plastic
Back Material	Plastic
Base Material	Plastic
Power	DC 12V
Power Consumption	27 Watts, Standby 5 Watts
Unit Dimension (W x H x D)	18.5" x 20" x 8.25" (470mm x 507mm x 210mm)
Color	Black

Accessory

Power Cord	1 set
15 pin D-Sub Cable	1 set

*Design and specifications are subject to change without notice

Lekson Video

3214 North University Ave. #528, Provo, UT 84604

Tel: 1-888-LEKSON1 | Fax: (801) 227-7819

www.leksonvideo.com

Special Features include:

High Resolution: 1280 x 1024 (SXGA)

BNC, VGA, S-Video

BNC Looping Output

Brightness of 300 cd²

Contrast of 700:1

Advanced Image Scaling

4H Comb Filter

Audio Input

19" Rack Mountable

VESA Wall-Mount Compatible
(100mm x 100mm)

19" TFT LCD Monitor



Side

**System**

Panel Size	19" LCD TFT
Resolution	1280 x 1024(SXGA)
Contrast Ratio	700 : 1
Brightness	300 cd ²
Aspect Ratio	5:4
View Angle	H : 150, V : 135
Response Time	9 ms
Video Signal	Composite signal 0.5~2 Vp-p/75Ω , Y:1 Vp-p, C:0.3 Vp-p
Video Mode	NTSC/PAL Auto Scanning
Scan Frequenc	H:30K~60KHz, V:56~75Hz
Regulatory Approvals	CE, FCC

Operation

Front Panner Controls	Menu, Up, Down, Volume up/down
Indicators	Power On LED
OSD Control	Color Temp, Utility, OSD, Language (5)
OSD Language	English, Francais, Deutsch, Espanol, Italiano

Connector

Input	D-Sub x 1 (0.7 Vp-p) Video Input (BNC) x 1 Video Input (S-Video) x 1 Audio Input (RCA) x 2
Output	Video Looping Out (BNC) x 1

Mechanical & Electric Design

Glass Frame	Optional
Audio Speaker	1W x 2
Looping 75	Yes
VESA Spec.	100mm x 100mm
Frame Material	Plastic
Back Material	Plastic
Base Material	Plastic
Power	DC 12V
Power Consumption	27 Watts, Standby 5 Watts
Unit Dimension (W x H x D)	18.5" x 20" x 8.25" (470mm x 507mm x 210mm)
Color	Black

Accessory

Power Cord	1 set
15 pin D-Sub Cable	1 set

*Design and specifications are subject to change without notice

Lekson Video

3214 North University Ave. #528, Provo, UT 84604

Tel: 1-888-LEKSON1 | Fax: (801) 227-7819

www.leksonvideo.com

Special Features include:

Ultra Bright LCD Screen

High Resolution: 800 x 600
(SVGA)

Contrast Ratio 600:1

Brightness of 450 cd/m²

3D Comb Filter

Deinterlace

Supports standard VGA and
Composite Inputs

Internal 2W Speakers

VESA Wall-Mount Compatible
((100mm x 100mm) x2)

20.1" TFT LCD Monitor



**General**

Display Type	LCD TFT (Thin-Film Transistor)
Size	20 inches
Signal system	525lines NTSC; 625lines PAL
Aspect Ratio	4:3

Panel

Pixel Pitch	0.510mm
Viewing Angle (Wide) (CR 5)	Horizontal: +/-80 (Left/Right), Vertical: +/-60 (Up/Down)
Display Colors	16.2M/6 bit + FRC
Contrast	600:1 (Typical)
Brightness	450cd/m ²
Color Temperature	Selectable at 6500°K / 9300°K
Response Time	16ms (typical)
Scanning Frequency	Horizontal: 31 ~ 82KHz, Vertical: 56 ~ 75Hz
Lamp Life Time	50,000Hrs (Min)
Display Resolution	800 x 600 (SVGA)
Surface Treatment	Hard coating(3H), Anti-glare

Connections

VGA Input	RGB Analog 0.7Vp-p, 15-pin D-sub Connector
Audio In/Out	Mono Jack(2)
Speaker	Internal Type 8Ω 2W (2)
Video In/Out	Composite Video(BNC), S-Video, VGA

Functions

Auto Sync Format Detection	NTSC/PAL/SECAM
OSD Language	6 Languages (English, Francis, Italian, Germany, Spanish, Portuguese)
Other Functions	3D Comb Filter / De-interlace

Environment

Operating Temperature	32 degrees to 104 degrees Farenheit
-----------------------	-------------------------------------

Electrical

Input Voltage	15VDC, 4.67A
Input Signal	0.5 to 2.0Vp-p
Input/Output Impedances	75Ω
Power Consumption	56 Watts (Includes Speaker)
Power Management	VESA DPMS Compatible

*Design and specifications are subject to change without notice

Lekson Video

3214 North University Ave. #528, Provo, UT 84604

Tel: 1-888-LEKSON1 | Fax: (801) 227-7819

WWW.LEKSONVIDEO.COM

Special Features include:

Ultra Bright LCD Screen

High Resolution: 1366 x 768
(WXGA)

Contrast Ratio 1200:1

Brightness of 450 cd/m²

3D Comb Filter

Deinterlace

Supports standard VGA and
Composite Inputs

Internal 2W Speakers

VESA Wall-Mount Compatible
((100mm x 100mm) x2)

23" TFT LCD Monitor



**General**

Display Type	LCD TFT (Thin-Film Transistor)
Size	23 inches
Signal system	525lines NTSC; 625lines PAL
Aspect Ratio	16 : 9

Panel

Pixel Pitch	0.327mm
Viewing Angle (Wide) (CR 5)	Horizontal: +/-89 (Left/Right), Vertical: +/-89 (Up/Down)
Viewable Size	20.00in(508.152mm) H x 11.24in(285.696mm) V
Display Colors	16.777million colors(8bit)
Contrast	1200:1(Typical)
Brightness	450cd/m ²
Color Temperature	10000°K
Response Time	8ms(typical)
Scanning Frequency	Horizontal: 31 ~ 82KHz, Vertical: 56 ~ 75Hz
Lamp Life Time	50,000Hrs(Min)
Display Resolution	1366 x 768 (WXGA)
Surface Treatment	Hard coating(3H), Anti-glare

Connections

VGA Input	RGB Analog 0.7Vp-p, 15-pin D-sub Connector
Audio In/Out	Mono Jack(2)
Speaker	Internal Type 8Ω 2W (2) (Option)
Video Inputs	Composite Video BNC, S-Video, VGA

Functions

Auto Sync Format Detection	NTSC/PAL/SECAM
OSD Language	6 Languages (English, Francis, Italian, Germany, Spanish, Portuguese)
Other Functions	3D Comb Filter, De-interlace

Electrical

Input Voltage	110-220VAC,50/60Hz
Input Signal	0.5 to 2.0Vp-p
Input/Output Impedances	75Ω
Power Consumption	88 Watts (Includes Speaker)
Power Management	VESA DPMS Compatible

*Design and specifications are subject to change without notice

Lekson Video

3214 North University Ave. #528, Provo, UT 84604

Tel: 1-888-LEKSON1 | Fax: (801) 227-7819

WWW.LEKSONVIDEO.COM

Special Features include:

Ultra Bright LCD Screen

High Resolution: 1366 x 768
(WXGA)

Contrast Ratio 800:1

Brightness of 500 cd/m²

3D Comb Filter

Deinterlace

Supports standard VGA and
Composite Inputs

Internal 2W Speakers

VESA Wall-Mount Compatible
((100mm x 100mm) x2)

26" TFT LCD Monitor



**General**

Display Type	LCD TFT (Thin-Film Transistor)
Size	26 inches
Signal system	525lines NTSC; 625lines PAL
Aspect Ratio	16 : 9

Panel

Pixel Pitch	0.4215mm
Viewing Angle (Wide) (CR 5)	Horizontal: +/-88 (Left/Right), Vertical: +/-88 (Up/Down)
Display Colors	16.777million colors(8bit)
Contrast	800:1 (Typical)
Brightness	500cd/m ²
Color Temperature	10000°K
Response Time	20ms(typical)
Scanning Frequency	Horizontal: 39.45 ~ 41.10KHz, Vertical: 48 ~ 52Hz
Lamp Life Time	60,000Hrs(Min)
Display Resolution	1366 x 768 (WXGA)
Surface Treatment	Hard coating(3H), Anti-glare

Connections

VGA Input	RGB Analog 0.7Vp-p, 15-pin D-sub Connector
Audio In/Out	Mono Jack(2)
Speaker	Internal Type 8Ω 2W (2) (Option)
Video Inputs	Composite Video BNC, S-Video, VGA

Functions

Auto Sync Format Detection	NTSC/PAL/SECAM
OSD Language	6 Languages (English, Francis, Italian, Germany, Spanish, Portuguese)
Other Functions	3D Comb Filter, De-interlace

Electrical

Input Voltage	24VDC, 5.42A
Input Signal	0.5 to 2.0Vp-p
Input/Output Impedances	75Ω
Power Consumption	120 Watts (Includes Speaker)
Power Management	VESA DPMS Compatible

Environment

Operating temperature	32°F-104°F (0°C~40°C)
-----------------------	-----------------------

*Design and specifications are subject to change without notice

Lekson Video

3214 North University Ave. #528, Provo, UT 84604

Tel: 1-888-LEKSON1 | Fax: (801) 227-7819

WWW.LEKSONVIDEO.COM

Special Features include:

Ultra Bright LCD Screen

High Resolution: 1366 x 768
(WXGA)

Contrast Ratio 1600:1

Brightness of 500 cd/m²

3D Comb Filter

Deinterlace

Supports standard VGA and
Composite Inputs

Internal 2W Speakers

VESA Wall-Mount Compatible
((100mm x 100mm) x2)

32" TFT LCD Monitor



**General**

Display Type	LCD TFT (Thin-Film Transistor)
Size	32 inches
Signal system	525lines NTSC; 625lines PAL
Aspect Ratio	16 : 9

Panel

Pixel Pitch	0.170mm x 0.510mm x RGB
Viewing Angle (Wide) (CR 5)	Horizontal: +/-89 (Left/Right), Vertical: +/-89 (Up/Down)
Display Colors	16.777million colors(8bit)
Contrast	1600:1(Typical)
Brightness	500cd/m ²
Color Temperature	10000°K
Response Time	18ms(typical)
Scanning Frequency	Horizontal: 45-50 Khz, Vertical: 47-63 Hz
Lamp Life Time	60,000Hrs(Min)
Display Resolution	1366 x 768 (WXGA)
Surface Treatment	Hard coating(3H), Anti-glare

Connections

VGA Input	RGB Analog 0.7Vp-p, 15-pin D-sub Connector
Audio In/Out	Mono Jack(2)
Speaker	Internal Type 8Ω 2W (2) (Option)
Video Inputs	Composite Video BNC, S-Video, VGA

Functions

Auto Sync Format Detection	NTSC/PAL/SECAM
OSD Language	6 Languages (English, Francis, Italian, Germany, Spanish, Portuguese)
Other Functions	3D Comb Filter, De-interlace

Electrical

Input Voltage	SMPS (AC 100 ~240V, 50/60Hz MAX 2.5A)
Input Signal	0.5 to 2.0Vp-p
Input/Output Impedances	75Ω
Power Consumption	150 Watts (Includes Speaker)
Power Management	VESA DPMS Compatible

Environment

Operating temperture	32°F-104°F (0°C~40°C)
----------------------	-----------------------

*Design and specifications are subject to change without notice

Lekson Video

3214 North University Ave. #528, Provo, UT 84604

Tel: 1-888-LEKSON1 | Fax: (801) 227-7819

WWW.LEKSONVIDEO.COM

Special Features include:

Ultra Bright LCD Screen

High Resolution: 1366 x 768
(WXGA)

Contrast Ratio 1600:1

Brightness of 500 cd/m²

3D Comb Filter

Deinterlace

Supports standard VGA and
Composite Inputs

Internal 2W Speakers

VESA Wall-Mount Compatible
((100mm x 100mm) x2)

37" TFT LCD Monitor



**General**

Display Type	LCD TFT (Thin-Film Transistor)
Size	37 inches
Signal system	525lines NTSC; 625lines PAL
Aspect Ratio	16 : 9

Panel

Pixel Pitch	0.200mm x 0.600mm x RGB
Viewing Angle (Wide) (CR 5)	Horizontal: +/-89 (Left/Right), Vertical: +/-89 (Up/Down)
Display Colors	16.777million colors(8bit)
Contrast	1600:1(Typical)
Brightness	500cd/m ²
Color Temperature	10000°K
Response Time	18ms(typical)
Scanning Frequency	Horizontal: 45-50 Khz, Vertical: 47-63 Hz
Lamp Life Time	60,000Hrs(Min)
Display Resolution	1366 x 768 (WXGA)
Surface Treatment	Hard coating(3H), Anti-glare

Connections

VGA Input	RGB Analog 0.7Vp-p, 15-pin D-sub Connector
Audio In/Out	Mono Jack(2)
Speaker	Internal Type 8Ω 2W (2) (Option)
Video Inputs	Composite Video BNC, S-Video, VGA

Functions

Auto Sync Format Detection	NTSC/PAL/SECAM
OSD Language	6 Languages (English, Francis, Italian, Germany, Spanish, Portuguese)
Other Functions	3D Comb Filter, De-interlace

Electrical

Input Voltage	SMPS (AC 100 ~240V, 50/60Hz MAX 2.5A)
Input Signal	0.5 to 2.0Vp-p
Input/Output Impedances	75Ω
Power Consumption	150 Watts (Includes Speaker)
Power Management	VESA DPMS Compatible

Environment

Operating temperature	32°F-104°F (0°C~40°C)
-----------------------	-----------------------

*Design and specifications are subject to change without notice

Lekson Video

3214 North University Ave. #528, Provo, UT 84604

Tel: 1-888-LEKSON1 | Fax: (801) 227-7819

WWW.LEKSONVIDEO.COM

Special Features include:

Ultra Bright LCD Screen

High Resolution: 1366 x 768
(WXGA)

Contrast Ratio 800:1

Brightness of 500 cd/m²

3D Comb Filter

Deinterlace

Supports standard VGA and
Composite Inputs

Internal 2W Speakers

VESA Wall-Mount Compatible
((100mm x 100mm) x2)

42" TFT LCD Monitor



**General**

Display Type	LCD TFT (Thin-Film Transistor)
Size	42 inches
Signal system	525lines NTSC; 625lines PAL
Aspect Ratio	16 : 9

Panel

Pixel Pitch	0.227mm x 0.681mm x RGB
Viewing Angle (Wide) (CR 5)	Horizontal: +/-89 (Left/Right), Vertical: +/-89 (Up/Down)
Display Colors	16.777million colors(8bit)
Contrast	800:1 (Typical)
Brightness	500cd/m ²
Color Temperature	10000°K
Response Time	18ms(typical)
Scanning Frequency	Horizontal: 45-50 Khz, Vertical: 47-63 Hz
Lamp Life Time	60,000Hrs(Min)
Display Resolution	1366 x 768 (WXGA)
Surface Treatment	Hard coating(3H), Anti-glare

Connections

VGA Input	RGB Analog 0.7Vp-p, 15-pin D-sub Connector
Audio In/Out	Mono Jack(2)
Speaker	Internal Type 8Ω 2W (2) (Option)
Video Inputs	Composite Video BNC, S-Video, VGA

Functions

Auto Sync Format Detection	NTSC/PAL/SECAM
OSD Language	6 Languages (English, Francis, Italian, Germany, Spanish, Portuguese)
Other Functions	3D Comb Filter, De-interlace

Electrical

Input Voltage	SMPS (AC 100 ~240V, 50/60Hz MAX 2.5A)
Input Signal	0.5 to 2.0Vp-p
Input/Output Impedances	75Ω
Power Consumption	200Watts, Standby 5Watts (idle: 5W)VESA DPMS Compatible
Power Management	VESA DPMS Compatible

Environment

Operating temperture	32°F-104°F (0°C~40°C)
----------------------	-----------------------

*Design and specifications are subject to change without notice

Lekson Video

3214 North University Ave. #528, Provo, UT 84604

Tel: 1-888-LEKSON1 | Fax: (801) 227-7819

WWW.LEKSONVIDEO.COM

Megapixel Monitors



Lekson Video's line of Megapixel Monitors are designed for applications that require a higher resolution and sharper picture than standard LCD monitors with resolution up to 2560 x 1600 or 4 megapixels. Get the most out of your megapixel security cameras by viewing them on monitors that can handle the higher resolution or use the crystal clear picture the monitor provides for advertising or display purposes.



Quick Reference Guide . . . page 30

Megapixel Monitors

MPLM230 23" 2.3 Megapixels . . . page 31

MPLM300 30" 4 Megapixels . . . page 33

MPLM370 37" 2 Megapixels . . . page 35

LEKSON
VIDEO

Megapixel Monitors Quick Reference Guide

	<i>Panel Size</i>	<i>Inputs</i>	<i>Resolution</i>	<i>Megapixels</i>	<i>Contrast Ratio</i>	<i>Brightness</i>	<i>Aspect Ratio</i>	<i>Viewing Angle</i>	<i>Response Time</i>	<i>Dimensions</i>
MPLM230	23"	DVI, VGA, Component	1920 x 1200	2.3	500:1	300 cd/m ²	12:10	H: 178 V:178	16 ms	21.5" L x 17" H x 6.65" W
MPLM300	30"	DVI-D	2560 x 1600	4	400:1	300 cd/m ²	12:10	H: 176 V:176	16 ms	27.68" L x 20.75" H x 6.65" W
MPLM370	37"	DVI-D, VGA, Component	1920 x 1080	2	800:1	500 cd/m ²	16:9	H: 178 V:178	8 ms	35.2" L x 23.5" H x 6.65" W



Call 1-888-LEKSON1 to order www.leksonvideo.com

Special Features include:

Designed for use with CCTV mega pixel cameras

Superior Resolution:
1920 x 1200 or 2.3 Megapixels

DVI Digital Video Input, VGA,
Component Video

Brightness of 300 cd/m,

Contrast of 500:1

23" Megapixel Monitor



Side



Back

General

Display Type	TFT LCD
Size	23-inch
Signal system	Single Link TMDS
	1920 x 1200 standard
Aspect Ratio	12:10
Unit Dimensions	21.5" (W) x 17" (H) x 6.65" (D) (546 x 431 x 169 mm)
Unit Weight	15.65 lbs (7.1 kg)

Panel

Pixel Pitch	0.258mm
Viewing Angle (Wide)(CR≥10)	Horizontal:±/-89°(Left/Right),Vertical:±/-89°(Up/Down)
Viewable Size	H : 19.50in.(495.36mm) x V : 12.19in.(309.6mm)
Display Colors	16.777million colors (8bit)
Contrast	500:1(Typical)
Brightness	300cd/m ²
Color Temperature	6500°K
Response Time	16ms (typical), 12ms (gray-to-gray)
Scanning Frequency	Horizontal:31~82KHz,Vertical:56~75Hz
Lamp Life Time	50,000Hrs(Min)
Display Resolution	1920 x 1200 (WUXGA)
Surface Treatment	Hard coating (3H), Anti-glare

Connections

DVI	RGB(D-Sub) / DVI-D (Single Link)
Video	Component (Y, Pb, Pr)
Power	2 Pin DC Jack

Electrical

Input Voltage	12VDC
Power Consumption	80 Watt (typical)

*Design and specifications are subject to change without notice

Additional Lekson Products



CCTV Security Cameras



CCTV LCD Monitors



Public View Monitors



Digital Video Recorders

Lekson Video

3214 North University Ave. #528, Provo, UT 84604

Tel: 1-888-LEKSON1 | Fax: (801) 227-7819

www.leksonvideo.com

Special Features include:

Designed for use with CCTV mega pixel cameras

Superior Resolution: 2560 x 1600 or four megapixels

DVI Digital Video Input

Brightness of 300 cd/m,

Contrast of 400:1

30" Four Megapixel Monitor



Side



Back

General

Display Type	TFT LCD
Size	30-inch
Signal system	Dual Link TMDS
	2560 x 1600 standard
	1280 x 800 available (Internal Scaling)
Aspect Ratio	12:10
Unit Dimensions	27.68" (W)x 20.75" (H) x 6.65" (D) (703 x 527 x 169 mm)
Unit Weight	23.15 lbs (10.5 kg)

Panel

Pixel Pitch	0.2505mm
Viewing Angle (Wide)(CR≥10)	Horizontal:±88°(Left/Right),Vertical:±88°(Up/Down)
Viewable Size	25.25in.(641.28mm)H x 15.78in.(400.8mm)V
Display Colors	16.777million colors (8bit)
Contrast	400:1(Typical)
Brightness	300cd/m ²
Color Temperature	6500°K
Response Time	16ms (typical), 12ms (gray-to-gray)
Scanning Frequency	Horizontal:31~82KHz,Vertical:56~75Hz
Lamp Life Time	50,000Hrs(Min)
Display Resolution	2560 x 1600 (WQXGA)
Surface Treatment	Hard coating (3H), Anti-glare

Connections

DVI	DVI-D
Power	4 Pin DC Jack

Electrical

Input Voltage	24VDC
Power Consumption	120 Watt (typical)
Power Management	VESA DPMS Compatible

*Design and specifications are subject to change without notice

Additional Lekson Products



CCTV Security Cameras



CCTV LCD Monitors



Public View Monitors



Digital Video Recorders

Lekson Video

3214 North University Ave. #528, Provo, UT 84604

Tel: 1-888-LEKSON1 | Fax: (801) 227-7819

www.leksonvideo.com

Special Features include:

Designed for Use with CCTV
Mega Pixel Cameras

Superior Resolution:
1920 x 1080 or 2.1 Megapixels

DVI Digital Video Input, VGA,
Component Video

Brightness of 500 cd/m

Contrast of 800:1

37" Two Megapixel Monitor





General

Display Type	TFT LCD
Size	37-inch
Aspect Ratio	16:9
Unit Dimensions	23.5" (W)x 35.25" (H) x 6.65" (D) (597 x 895 x 169 mm)
Unit Weight	33 lbs (15 kg)

Panel

Pixel Pitch	0.42675mm
Viewing Angle (Wide)(CR≥10)	Horizontal:±/-89°(Left/Right),Vertical:±/-89°(Up/Down)
Display Colors	16.777million colors (8bit)
Contrast	800:1(Typical)
Brightness	500cd/m ²
Color Temperature	6500°K
Response Time	8ms (typical), 12ms (gray-to-gray)
Scanning Frequency	Horizontal:31~82KHz,Vertical:56~75Hz
Lamp Life Time	50,000Hrs(Min)
Display Resolution	1920 x 1280 (Full HD)
Surface Treatment	Hard coating (3H), Anti-glare

Connections

Inputs	RGB(D-Sub) / DVI-D (Single Link) / Component (Y,Pb,Pr)
--------	--

Electrical

Input Voltage	DC24V, 6.67A
Power Consumption	150 Watt (Max)
Power Management	VESA DPMS Compatible

*Design and specifications are subject to change without notice

Digital Video Recorders

Lekson Video manufactures a feature rich and competitively priced line of Digital Video Recorders. Choose from 4, 8, 9, or 16 channel embedded, Triplex and Pentaplex units or a 1 or 4 channel mobile DVR system. All of Lekson Video's DVRs have network viewing capability. The majority of the DVR units use MPEG-4 video compression which provides excellent picture quality while utilizing reduced file sizes to maximize storage space. If more storage space is needed up to one terabyte of hard drive space can be added to the 8, 9, and 16 channel systems.



DVR Quick Reference Guidepage 38

L Series Digital Video Recorders

L4DVR160 4 Ch Triplex DVR 39

L9DVR250 9 Ch Triplex DVR 41

L16DVR250 16 Ch Triplex DVR 41

L924DVR250 9 Ch Triplex DVR 43

L1624DVR250 16 Ch Triplex DVR 43

SE Series Digital Video Recorders

SE4DVR 4 Ch Pentaplex DVR 45

SE8DVR 8 Ch Pentaplex DVR 45

SE16DVR 16 Ch Pentaplex DVR 45

P Series Digital Video Recorders

P4DVR 4 Ch Pentaplex DVR 47

P8DVR 8 Ch Pentaplex DVR 47

P16DVR 16 Ch Pentaplex DVR 47

C Series Digital Video Recorders

C8DVR 8 Ch Pentaplex DVR 49

C16DVR 16 Ch Pentaplex DVR 49

Mobile Digital Video Recorders

D1DVR 1 Ch Mobile DVR 51

D4DVR 4 Ch Mobile DVR 51

LEKSON
VIDEO

Digital Video Recorder Quick Reference Guide

	Channels	Hard Drive Size	Compression	Recording Frame Rate	PTZ Control	Audio Inputs/Outputs	Remote Viewer
L4DVR	4	160 GB	MPEG-4	120 ips @ 360x240/30ips @ 720x480	Yes	4in1out	Yes
L9DVR	9	250, 500, 750, 1000 GB	MPEG-4	120 ips @352x240/60ips@704x240/30ips @702x480	Yes	4in1out	Yes
L16DVR	16	250, 500, 750, 1000 GB	MPEG-4	120 ips @352x240/60ips@704x240/30ips @702x480	Yes	4in1out	Yes
L924DVR	9	250, 500, 750, 1000 GB	MPEG-4	240 ips @352x240/120ips@704x240/60ips @702x480	Yes	4in1out	Yes
L1624DVR	16	250, 500, 750, 1000 GB	MPEG-4	240 ips @352x240/120ips@704x240/60ips @702x480	Yes	4in1out	Yes
SE4DVR	4	160 GB	MPEG-4	120 ips @ 336x224 60ips @ 672x224	Yes	1in1out	Yes
SE8DVR	8	250, 500, 750, 1000 GB	MPEG-4	120 ips @ 336x224 60ips @ 672x224	Yes	1in1out	Yes
SE16DVR	16	250, 500, 750, 1000 GB	MPEG-4	120 ips @ 336x224 60ips @ 672x224	Yes	1in1out	Yes
P4DVR	4	160 GB	MPEG-4	120 ips @ 336x224/120ips @ 672x224/60ips @672x448	Yes	1in1out	Yes
P8DVR	8	250, 500, 750, 1000 GB	MPEG-4	120 ips @ 336x224/120ips @ 672x224/60ips @672x448	Yes	1in1out	Yes
P16DVR	16	250, 500, 750, 1000 GB	MPEG-4	120 ips @ 336x224/120ips @ 672x224/60ips @672x448	Yes	1in1out	Yes
C8DVR	8	250, 500, 750, 1000 GB	MPEG-4	240 ips @354 x 240	Yes	4in1out	Yes
C16DVR	16	250, 500, 750, 1000 GB	MPEG-4	480 ips @354 x 240	Yes	8in1out	Yes
D1DVR	1	80 GB	JPEG	30 ips @ 320 x 240/30 ips @720x240	No	1in1out	Yes
D4DVR	4	80 GB	JPEG	30 ips @ 320 x 240/30 ips @720x240	No	1in1out	Yes



Special Features include:

MPEG-4 video compression provides excellent picture quality while utilizing reduced file sizes

System features: live view, record, playback, and export images via avi or jpeg formats

Multi-screen display

Networking capability with Client Management Software (CMS Included)

Front panel USB

User friendly on screen menus

Four alarm input connections, one relay output connection

Recording modes include: manual, schedule, alarm, and motion

Recording speeds:
 NTSC 120 ips at 360x240 and 30 ips at 720x480
 PAL 100 ips at 360 x 288 and 25 ips at 720 x 576

Multiple protocols for built in Pan/Tilt/Zoom controller

Four channels of audio

Hand-held remote control (optional)

4-Channel Triplex Digital Video Recorder



Back View

System Configuration



System Features

Input	4 ch NTSC / PAL, 1.0V peak to peak, 75 ohm, BNC	
Output	1 ch NTSC / PAL, 1.0V peak to peak, 75 ohm, BNC	
	1 VGA	
Audio Input & Output	4 Line In (RCA) / 1 Line Out (RCA)	
Alarm Input & Output	4 Sensor In / 1 Alarm Out	
Os	Embedded	
Dimensions	10.5" (L) x 13.75" (W) x 3" (H)	

Recording

I Mode / Method	Manual, Motion, Sensor, and Schedule
-----------------	--------------------------------------

Video Compression/Resolution/Frame Rate

Compression Algorithm	MPEG-4	
Resolution	NTSC	PAL
	360 x 240, 720 x 480	360 x 288, 720 x 576
	120 ips at 360 x 240	100 ips at 360 x 288
Still Image Capture	JPEG	JPEG

Motion Detection

Full or partial area set-up per each channel
--

Multi-task

Record, Playback, and Network

Screen Display

Single or Quad

Control Unit

IR type remote control and controls on front panel
--

Communication Protocol

Console	1 RS-232C
Camera Control	1 RS-485

Network

Type	ADSL, LAN / Dynamic IP Support
LAN Port	1 10/100-base T Ethernet
CMS Network Software (Included)	Controls live viewing, searching recorded video, and PTZ functions

HDD

Capacity	160 GB (optional increase of hard drive capacity)
----------	---

Export

Network	Still Image and Video
USB	Still Image and Video

*Design and Product Specifications Subject to Change

Additional Lekson Products



CCTV Security Cameras



CCTV LCD Monitors



Public View Monitors



IR Security Cameras

Lekson Video

3214 North University Ave. #528, Provo, UT 84604

Tel: 1-888-LEKSON1 | Fax: (801) 227-7819

www.leksonvideo.com

L9DVR250/L16DVR250

Special Features include:

MPEG-4 video compression provides excellent picture quality while utilizing reduced file sizes

Choose from 250 GB, 500 GB, 750, GB or 1 Terabyte Hard Drives

System features: live view, record, playback, and export images via avi or jpeg formats

Multi-screen display

Networking capability with Network Client Viewer Software (NCV Included)

CD-RW and front panel USB

User friendly on screen menus

Four alarm input connections, one relay output connection

Recording modes include: manual, schedule, alarm, and motion

Recording speeds:
NTSC 120 ips at 352x240
60 ips at 704x240
and 30 ips at 704x480
PAL 100 ips at 352x 288
50 ips at 704x288
and 25 ips at 704 x 576

Multiple protocols for built in Pan/Tilt/Zoom controller

Four channels of audio

Hand-held remote control (optional)

9/16-Channel Digital Video Recorder





SPECIFICATIONS

L9DVR250/L16DVR250

Video	ITEM	L9DVR250	L16DVR250
Input	Channel, Input Level	9 CH, Composite 1.0Vp-p, 75 Ohm	16 CH, Composite 1.0Vp-p, 75Ohm
	Signal Format,		NTSC/PAL
	Video Loss Check		Yes
Output	Main Monitor Output	1 CH BNC, 1 CH S-VIDEO, 1 CH VGA	
	Output Level	Composite 1.0Vp-p +_0.2, 75 Ohm	
	Signal Format	NTSC/PAL & VGA	
	Ext Output	9 CH Loop - through, 1 CH SPOT	16 CH Loop-through, 1CH SPOT
Audio			
Input & Output		4 CH Line input & 1 CH Line output	
Audio Codec		G.711	
Alarm			
Input & Output		8 & 8 (NC/NO Selectable)	16 & 8 (NC/NO Selectable)
Alarm Out Type		Alarm, Motion, HDD Error, Temperature, FAN Failure, Video Loss, & ABCD	
Recording			
Compression		MPEG-4	
Multi - operation		TRIPLEX (Playback/Record/Network)	
Frame Rate	NTSC	120fps @ 352 x 240 60fps @ 704 x 240 30fps @ 704 x 480	
	PAL	100fps @ 352 x 288 50fps @ 704 x 288 25fps @ 704 x 576	
Recording quality grade		10 grades	
Recording Mode		Continuous/ Schedule/ Motion/ Sensor/ Manual	
Motion Detection		Motion detection setup by Grid	
Pre & Post Recording		Yes	
Display			
Frame Rate (/ Sec)		NTSC: 30fps/ channel, 60 filed / PAL: 25fps/ channel, 50 field	
Search & Playback			
Multi - Decoding		1, 4, 9, 16, & PIP	
Playback Speed	Play	1	
	Fast Forward / Reverse	2, 4, 8, Max	
	Slow	1/2, 1/4, 1/8, Max	
Search Mode		Time, Event, Channels	
Storage			
Internal HDD	Interface Type	EIDE/ATA 133	
	Max Capacity of 1 HDD	250GB	
	Max HDD Number	4	
File system		Internally developed to prevent loss of recorded data due to power failure	
Backup	USB 2.0 memory stick	Still Image (Watermarking) & AVI	
	Network	Moving picture & Still Image (Watermarking)	
	CD-RW	USB 2.0 Interface	
User Interface			
Menu Display		GUI	
Input Method		Front Keypad, Remote controller	
Serial port			
Console & External Modem		1 RS-232C (9pin D-SUB connector)	
Camera Control		1 RS-485/422 (4 Terminal Block)	
Network			
Dynamic IP Support		Yes	
Network Interface		10/100 base-T Ethernet (RJ-45)	
Network Client S/W			
Functions		Live, Search, Backup, Setup, Upgrade, Camera Control	
Central Monitoring System		Yes	
Additional Functions			
DLS (Day Light Saving)		Yes	
Multi-Language		Yes	
S/W Upgrade		USB memory stick, Network	
Power			
Power Source		100-127V/200-240V, 50-60HZ	

*Design and Product Specifications Subject to Change

Lekson Video

3214 North University Ave. #528, Provo, UT 84604

Tel: 1-888-LEKSON1 | Fax: (801) 227-7819

L924DVR250/L1624DVR250

Special Features include:

MPEG-4 video compression provides excellent picture quality while utilizing reduced file sizes

Choose from 250 GB, 500 GB, 750, GB or 1 Terabyte Hard Drives

System features: live view, record, playback, and export images via avi or jpeg formats

Multi-screen display

Networking capability with Network Client Viewer Software (NCV Included)

CD-RW and front panel USB

User friendly on screen menus

Four alarm input connections, one relay output connection

Recording modes include: manual, schedule, alarm, and motion

Recording speeds:

NTSC 240 ips at 352x240

120 ips at 704x240

and 60 ips at 704x480

PAL 200 ips at 352x 288

100 ips at 704x288

and 50 ips at 704 x 576

Multiple protocols for built in Pan/Tilt/Zoom controller

Four channels of audio

Hand-held remote control (optional)

9/16-Channel Digital Video Recorder





SPECIFICATIONS

L9DVR250/L16DVR250

Video	ITEM	L9DVR250	L16DVR250
Input	Channel, Input Level	9 CH, Composite 1.0Vp-p, 75 Ohm	16 CH, Composite 1.0Vp-p, 75Ohm
	Signal Format,		NTSC/PAL
	Video Loss Check		Yes
Output	Main Monitor Output	1 CH BNC, 1 CH S-VIDEO, 1 CH VGA	
	Output Level	Composite 1.0Vp-p +_0.2, 75 Ohm	
	Signal Format	NTSC/PAL & VGA	
	Ext Output	9 CH Loop - through, 1 CH SPOT	16 CH Loop-through, 1CH SPOT
Audio			
Input & Output		4 CH Line input & 1 CH Line output	
Audio Codec		G.711	
Alarm			
Input & Output		8 & 8 (NC/NO Selectable)	16 & 8 (NC/NO Selectable)
Alarm Out Type		Alarm, Motion, HDD Error, Temperature, FAN Failure, Video Loss, & ABCD	
Recording			
Compression		MPEG-4	
Multi - operation		TRIPLEX (Playback/Record/Network)	
Frame Rate	NTSC	240fps @ 352 x 240 120fps @ 704 x 240 60fps @ 704 x 480	
	PAL	200fps @ 352 x 288 100fps @ 704 x 288 50fps @ 704 x 576	
Recording quality grade		10 grades	
Recording Mode		Continuous/ Schedule/ Motion/ Sensor/ Manual	
Motion Detection		Motion detection setup by Grid	
Pre & Post Recording		Yes	
Display			
Frame Rate (/ Sec)		NTSC: 30fps/ channel, 60 filed / PAL: 25fps/ channel, 50 field	
Search & Playback			
Multi - Decoding		1, 4, 9, 16, & PIP	
Playback Speed	Play	1	
	Fast Forward / Reverse	2, 4, 8, Max	
	Slow	1/2, 1/4, 1/8, Max	
Search Mode		Time, Event, Channels	
Storage			
Internal HDD	Interface Type	EIDE/ATA 133	
	Max Capacity of 1 HDD	250GB	
	Max HDD Number	4	
File system		Internally developed to prevent loss of recorded data due to power failure	
Backup	USB 2.0 memory stick	Still Image (Watermarking) & AVI	
	Network	Moving picture & Still Image (Watermarking)	
	CD-RW	USB 2.0 Interface	
User Interface			
Menu Display		GUI	
Input Method		Front Keypad, Remote controller	
Serial port			
Console & External Modem		1 RS-232C (9pin D-SUB connector)	
Camera Control		1 RS-485/422 (4 Terminal Block)	
Network			
Dynamic IP Support		Yes	
Network Interface		10/100 base-T Ethernet (RJ-45)	
Network Client S/W			
Functions		Live, Search, Backup, Setup, Upgrade, Camera Control	
Central Monitoring System		Yes	
Additional Functions			
DLS (Day Light Saving)		Yes	
Multi-Language		Yes	
S/W Upgrade		USB memory stick, Network	
Power			
Power Source		100-127V/200-240V, 50-60Hz	

*Design and Product Specifications Subject to Change

Lekson Video

3214 North University Ave. #528, Provo, UT 84604

Tel: 1-888-LEKSON1 | Fax: (801) 227-7819

SE4DVR/SE8DVR/SE16DVR

Special Features include:

Penta-plex System :
Five tasks operating independently
(Live/Record/Playback/Network/
Backup)

Enhanced MPEG-4 Compression
(Average file size: 1~2.5kb)

Live Monitoring and Playback can
be performed on the same screen.

Multiple Search Mode and Smart
Search Function

Hidden / Covert Camera Function

HDD Mirroring between Internal
HDD and External HDD

Mini Player :
Auto Installation into DVD or
CD during Backup

Backup Files into AVI & JPEG Formats

POS Customization Support

Powerful Extension to Various
External Controllers

Remote Configuration /
Software Upgrade

Automatic E-mail Notification

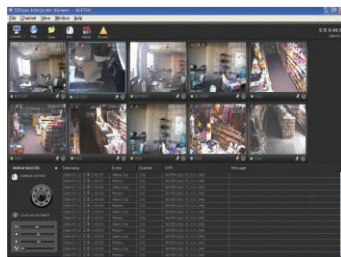
Advanced e-Map Management

Static and Dynamic IP Support /
Dynamic DNS Service for Easy
Remote Connection

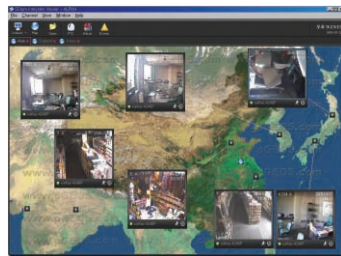
Digital Video Recorder



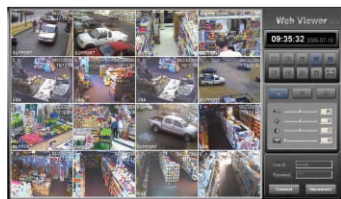
Remote Software



- Live Viewer & Search Viewer
(CMS: Central Management System)
- 64ch Monitoring and Recording at the Same Time
 - Simultaneous Live or Playback per Channel
 - Timeline Based Search
 - Remote Alarm In / Out Control
 - Remote PTZ Control
 - Live Image Save and Print
 - Digital Zoom



- SMS
(Server Management System: Advanced CMS)
- Remote Event Monitoring
 - Event Log Management
 - Available to Manage Unlimited Number of DVRs
 - E-Map Based Monitoring
 - Remote Server Configuration Setup
 - Remote Server Upgrade
 - Remote Backup and CD Burning (Direct/Event/Schedule)

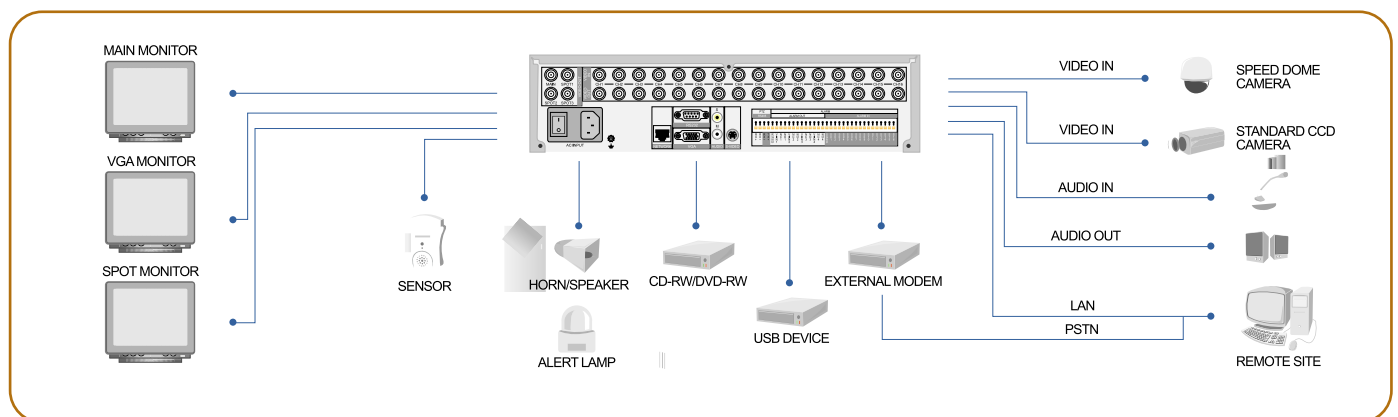


- Web Viewer
- MS Internet Explorer Viewer
 - Remote Alarm In/Out Control
 - Remote PTZ Control
 - Digital Zoom? Live Image Save and Print

SE4DVR/SE8DVR/SE16DVR

Mode		SE4DVR	SE8DVR	SE16DVR	
Video CH	Input/ Loop Output	4CH BNC / 4CH BNC	8CH BNC / 8CH BNC	16CH BNC / 16CH BNC	
	Output	1CH MAIN, 1CH SPOT OUT(3CH for SDVS-16120E), D-sub 15pin(VGA Output)			
Audio CH	Input / Output	1CH in / 1CH out (RCA)			
Alarm/Sensor CH		4 in / 1 out	8 in / 1 out	16 in / 4 out	
Display	Speed	120(NTSC)/100(PAL)fps	240(NTSC)/200(PAL)fps	480(NTSC)/400(PAL)fps	
	Resolution	720×480(NTSC) / 720×576(PAL)			
Recording	CIF	Speed	120(NTSC)/100(PAL)fps	120(NTSC)/100(PAL)fps	
		Resolution	336×224(NTSC) / 336×272(PAL)		
	HVGA	Speed	60(NTSC)/50(PAL)fps	60(NTSC)/50(PAL)fps	60(NTSC)/50(PAL)fps
		Resolution	672×224(NTSC) / 672×272(PAL)		
	Compression		Enhanced MPEG4		
	Mode		Motion detection, Sensor, Schedule, Variable compression rate		
Storage media		Removable HDD×1	Internal HDD×4 or Internal HDD×3 + 1 DVD-RW(or CD-RW)		
Playback	Mode	Multi CH playback, Simultaneous playback with Live, Panorama			
	Searching	By Channel, Time, Date, Motion detection, Sensor event.			
Network	Feature	Static IP, DHCP, DDNS supports, E-mail Alert notification, File download			
		Multiple Access, Web Brower, Advanced CMS(SMS) Support			
	SMS	Server Management System (Remote configuration, E-Map management, Back-up via network)			
Backup		DVD-RW or CD-RW, USB Memory sticks, external USB CD-RW, external HDD, Via Network			
Communication		TCP/IP, External Modem, Serial ports(RS-232), RS-485(PTZ)			
External ports		RS-485, RS-232C, RJ-45, USB 2.0 (2 ports)			
Control		Front key panel, IR Remote controller, Via Network			
Operating	Multi-task(Pentaplex)	Live, Playback, Recording, Network, Backup			
Hardware spec	Dimension	350(W)×400(D)×88(H) : 2U Rack Mount Kit			
	Weight without HDD	Approx. 7Kg			

System Configuration



Lekson Video

3214 North University Ave. #528 Provo , UT 84604

Tel: (801) 227-7818 | Fax: (801) 227-7819

Email: sales@leksonvideo.com | www.leksonvideo.com

P4DVR/P8DVR/P16DVR

Special Features include:

Penta-plex System :
Five tasks operating independently
(Live/Record/Playback/Network/
Backup)

Enhanced MPEG-4 Compression
(Average file size: 1~2.5kb)

Live Monitoring and Playback can
be performed on the same screen.

Multiple Search Mode and Smart
Search Function

Hidden / Covert Camera Function

HDD Mirroring between Internal
HDD and External HDD

Mini Player :
Auto Installation into DVD or
CD during Backup

Backup Files into AVI & JPEG Formats

POS Customization Support

Powerful Extension to Various
External Controllers

Remote Configuration /
Software Upgrade

Automatic E-mail Notification

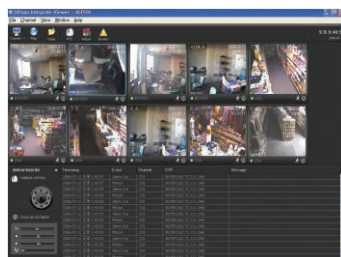
Advanced e-Map Management

Static and Dynamic IP Support /
Dynamic DNS Service for Easy
RemoteConnection

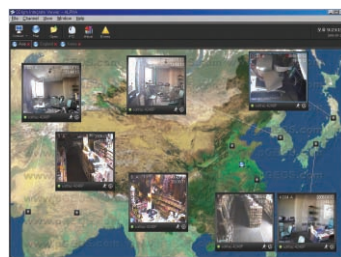
Digital Video Recorder



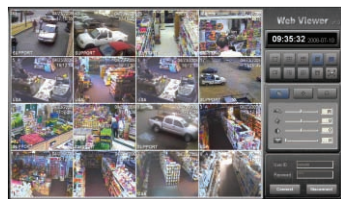
Remote Software



- Live Viewer & Search Viewer
(CMS: Central Management System)
- 64ch Monitoring and Recording at the Same Time
 - Simultaneous Live or Playback per Channel
 - Timeline Based Search
 - Remote Alarm In / Out Control
 - Remote PTZ Control
 - Live Image Save and Print
 - Digital Zoom



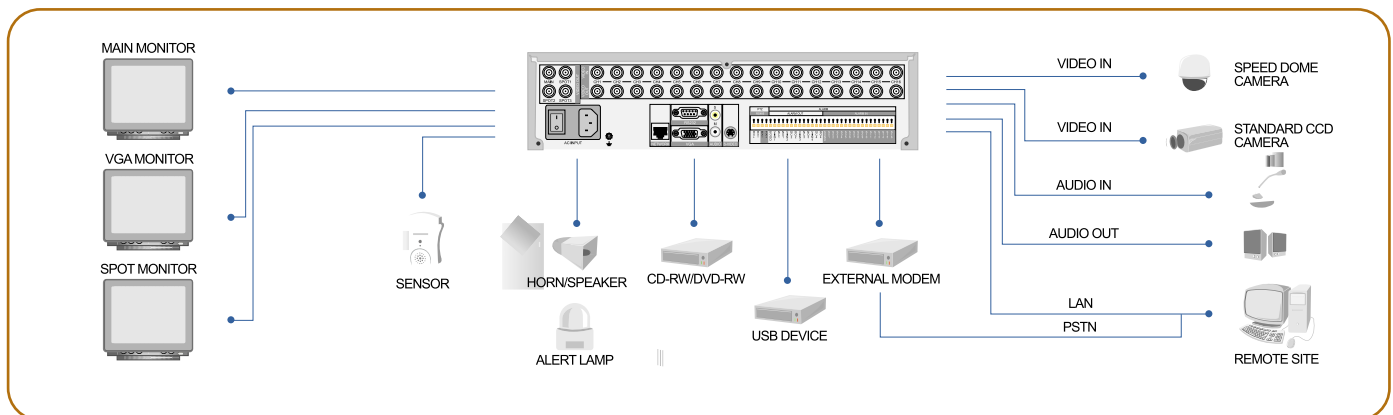
- SMS
(Server Management System: Advanced CMS)
- Remote Event Monitoring
 - Event Log Management
 - Available to Manage Unlimited Number of DVRs
 - E-Map Based Monitoring
 - Remote Server Configuration Setup
 - Remote Server Upgrade
 - Remote Backup and CD Burning (Direct/Event/Schedule)



- Web Viewer
- MS Internet Explorer Viewer
 - Remote Alarm In/Out Control
 - Remote PTZ Control
 - Digital Zoom? Live Image Save and Print

Mode		P4DVR	P8DVR	P16DVR	
Video CH	Input / Loop Out	4CH BNC / 4CH BNC	8CH BNC / 8CH BNC	16CH BNC / 16CH BNC	
	Output	1CH MAIN, 1CH SPOT OUT (3CH for SDVS-16240P), D-sub 15pin(VGA Output)			
Audio CH	Input / Output / Codec	1CH in / 1CH out (RCA), G.726			
Alarm/Sensor CH		4 in / 1 out	8 in / 1 out	16 in / 4 out	
Display	Speed	120(NTSC)/100(PAL)fps	240(NTSC)/200(PAL)fps	480(NTSC)/400(PAL)fps	
	Resolution	720×480(NTSC) / 720×576(PAL)			
Recording	CIF	Speed	120(NTSC)/100(PAL)fps	240(NTSC)/200(PAL)fps	
		Res.	336×224(NTSC) / 336×272(PAL)		
	HVGA	Speed	120(NTSC)/100(PAL)fps	120(NTSC)/100(PAL)fps	120(NTSC)/100(PAL)fps
		Res.	672×224(NTSC) / 672×272(PAL)		
	VGA	Speed	60(NTSC)/50(PAL)fps	60(NTSC)/50(PAL)fps	60(NTSC)/50(PAL)fps
		Res.	672×448(NTSC) / 672×544(PAL)		
	Compression	Enhanced MPEG4			
	Mode	Motion detection, Sensor, Schedule, Variable compression rate			
Storage media	Removable HDD x 1	Internal HDD×4 or Internal HDD×3 + 1 DVD-RW(or CD-RW)			
Playback	Mode	Multi CH playback, Simultaneous playback with Live, Panorama			
	Searching	By Channel, Time, Date, Motion detection, Sensor event.			
Network	Feature	Static IP, DHCP, DDNS supports, E-mail Alert notification, File Download			
	Multiple access	Multiple Access, Web Brower, Advanced CMS(SMS) Support			
	SMS	Server Management Sytem (Remote configuration, E-Map management, Back-up via network)			
Backup	DVD-RW or CD-RW, USB Memory sticks, external USB CD-RW, external HDD, Via Network				
Communication	TCP/IP, External Modem(PSTN), Console(RS-232), RS-485(PTZ)				
External ports	RS-485, RS-232C, RJ-45, USB 2.0 (2 ports)				
Control	Mouse, Front key panel, IR Remote controller, Via Network				
Operating	Multi-task(Pentaplex)	Live, Playback, Recording, Network, backup			
Hardware spec	Dimension	350(W)×400(D)×88(H) : 2U Rack Mount Kit			
	Weight without HDD	Approx. 7Kg			

System Configuration



Lekson Video

3214 North University Ave. #528 Provo, UT 84604

Tel: (801) 227-7818 | Fax: (801) 227-7819

Email: sales@leksonvideo.com | www.leksonvideo.com

Special Features include:

Features

4 Channels Video Input and Looping Video (Model Dependent)

MPEG4 ASP Provides Unbeatable Recording Picture Quality and Compression Ratio

Records and Plays in High-definition Video(704x480 NTSC / 704x576 PAL) with Built-in Hard Drive up to 2HDD

Small File Size Minimize Recording Space and Allow for Faster Networking

Pentaplex Feature Allows for Simultaneous Live Monitoring, Recording, Playback, Networking and Archiving

Multiple Search Engines

Records up to 30 FPS per Channel

Continuous Recording in Disk Overwrite Mode

Archiving to USB Hard Disk Drive, Internal CD/DVD-RW Drive or USB2.0 Stick Memory

User-friendly Server GUI Menu and Front Button System

Audio Recording and Playback

Password Protection

IR Remote Control

Network -- Static IP, DHCP, DDNS Support / Multi User Support

Web Client S/W Support

Live or Recorded Video Access Via Ethernet or Modem

Digital Video Recorder



CMS Software Features

Central Monitoring Station (CMS) Software Consists of Following Features:

CMS Watch Log: Remote Surveillance Log Programme

CMS Watch PTZ: Remote Surveillance PTZ Control Programme

CMS Health Check: Remote Surveillance Health Check Programme

CMS Search Time: Remote Surveillance Time Search Programme

CMS Search Local: Remote Surveillance PC Local Programme

CMS Remote Configuration: Remote CRT Server Configuration Programme

-Controls System Management, Video Monitoring and Image Playback of Remotely Connected CRT Series

-Checking and Reporting on the DVR Status at a Remote Site

-Remote Monitoring of Live Camera Images

-RS485/RS422 Ports to Communicate with External Devices such as PTZ and Dome Cameras

-Spot Monitor Output Mode (up to 3 Spot)

-USB Mouse Support

-Various Record Modes

-Set-up Configuration can be Loaded/Saved via USB Port, CD/DVD-RW or TCP/IP (CMS)

-OS : Embedded Linux in Flash

-Server to Server Function (Feature Release)



SPECIFICATIONS

C8DVR/C16DVR

Model	C8DVR	C16DVR
Compression	Advanced MPEG4 ASP	
Signal Format	NTSC or PAL (Auto Selected)	
Video Input	Composite 8 BNC Inputs	Composite 16 BNC Inputs
Video Output	Composite: 1, 1Vp-p, 75 Ohm	
	8 BNC Looping Outputs	16 BNC Looping Outputs
Spot Output	1 BNC	3 BNC
ISVHS Output	1 (SVHS)	
VGA Output	1 (VGA)	
Display Resolution	704 x 480, 704 x 240, 352 x 240 (NTSC) / 704 x 576, 704 x 288, 352 x 288 (PAL)	
Recording Resolution	704 x 480, 704 x 240, 352 x 240 (NTSC) / 704 x 576, 704 x 288, 352 x 288 (PAL)	
Display Frame Rate	354 x 240 : 240FPS (NTSC)	352 x 240 : 480FPS (NTSC)
	252 x 288 : 200FPS (PAL)	352 x 288 : 400FPS (PAL)
Recording Frame Rate	354 x 240 : 240FPS (NTSC)	352 x 240 : 480FPS (NTSC)
	252 x 288 : 200FPS (PAL)	352 x 288 : 400FPS (PAL)
Playback Frame Rate	352 x 240 : 240FPS (NTSC) / 352 x 288 : 200FPS (PAL)	
Audio Input	4 Inputs (RCA Jack)	8 Inputs (RCA Jack)
Audio Output	1 Output (RCA Jack)	
Ethernet	10/100Mbps Ethernet (RJ-45)	
PTZ Control	RS-485/422 Serial Port 1 (Terminal Block)	
Alarm Input	8, 12 or 16 TTL, Programmable as NC/NO (Model Dependent)	
Alarm Output	8, 12 or 16 TTL, Programmable as NC/NO (Model Dependent)	
USB Port	3 x USB (1 x Front Panel, 2 x Rear Panel)	
Recording Qualities	Super / High / Standard	
Recording Modes	Schedule / Alarm / Motion / Emergency	
Pre-Alarm Recording	up to 3,600 Seconds / User Programmable	
Operating System	Embedded Linux	
OS Firmware	Linux OS in Flash Memory	
Emergency Record Key	Yes	
Primary Storage	EIDE Hard Disk Drive (up to 4+0 or 3+1)	
Clip Copy Storage	Built-in Internal CD-RW or DVD/CD-RW Driver / Via USB HDD / Memory Stick	
Dimension (WxHxD)	430mm x 88mm x 400mm / 16.93inch x 3.46inch x 15.75inch	
Operating Temperature	5°C~40°C / 41°F~104°F	
Operating Humidity	0% ~ 90%	
Power Adapter	100 to 240 VAC, 1/2A, 50~60Hz	
Power Consumption	Max 90W	
Agency Approval	FCC / CE / UL	

*Design and specifications are subject to change without notice

Lekson Video
 3214 North University Ave. #528 Provo, UT 84604
 Tel: (801) 227-7818 | Fax: (801) 227-7819
 Email: sales@leksonvideo.com | www.leksonvideo.com

Special Features include:

SEMI DUPLEX

Record and remote transmission can be performed simultaneously. Playback and remote transmission can be performed simultaneously. Record and playback cannot be performed simultaneously.

"REMOTE FRONT" CONTROL

The remote front can be run at laptop computer to control the DVR though crossed over LAN cable. It's very useful function for the Police car solution, where DVR can be located away from the passenger compartment.

SEARCH AND PLAYBACK

Easy to use digital CALENDAR search, EVENT search Frame advance/rewind, fast playback, fast reverse playback and pause. Playback in multi pictures and full screen Playback with audio

INSTANT BACKUP

Data backup to CF/SD card at CALENDAR search.

AUTOMATIC BACKUP TO CF CARD

The AUTO BACKUP allows you to record on the CF card as well as HDD simultaneously.

EVENT DATA BACKUP WITHOUT MONITOR

Automatically copies latest event data to CF card in live mode.

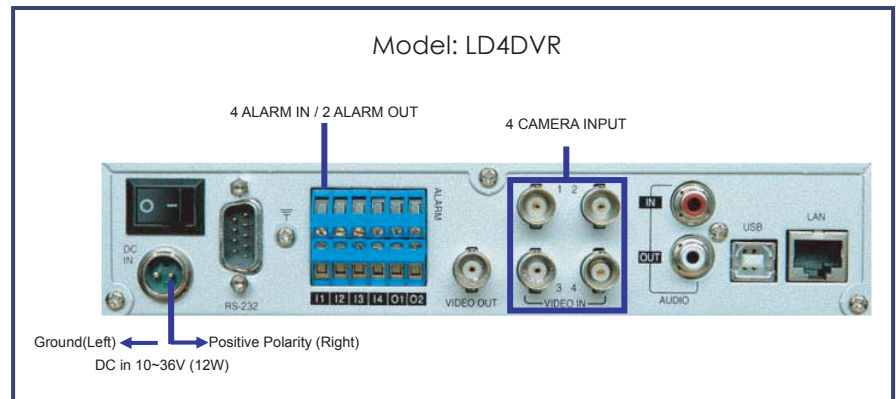
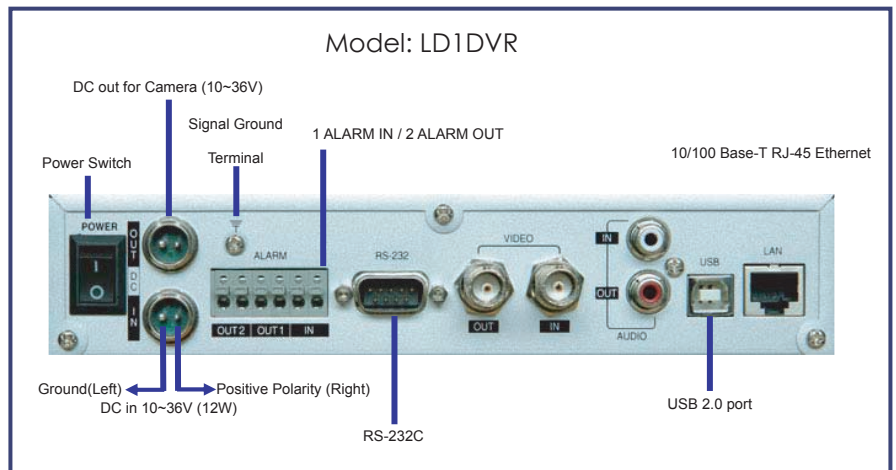
INTERNAL HARD DISK DRIVE

1 space for the laptop HDD (2.5 inch HDD)
 HITACHI Travelstar
 (Operating temp: 5° to 55° C)
 40GB, 80GB, 100GB
 HITACHI Endurastar
 (Operating temp: -20° to 85° C)
 30GB

FAN LESS DESIGN & DUSTPROOF FILTER

No fan inside of the MDVR

Digital Video Recorder





SPECIFICATIONS

D1DVR/D4DVR

System Features

Input	1 ch or 4ch BNC Composite
Output	1 ch BNC Composite
Audio Input & Output	1ch(In and Out) Optional
Alarm Input & Output	2,4 Terminal Block In/1,2 Terminal Block Out
Dimensions	210 x 145x 43(WxDxH), 1kg(include HDD)

Recording

Mode / Method	Normal, Event, Pre-Record
---------------	---------------------------

Video Compression/Resolution/Frame Rate

Compression Algorithm	JPEG Standard
Resolution	720 x 240, 320 x 240 (NTSC) 720 x 288, 320 x 288 (PAL) 1-30 fps (NTSC) / 1-25 fps (PAL)

Multi-task	Semi-Duplex
-------------------	-------------

Screen Display	1 or 4
-----------------------	--------

Network

Type	Standard Ethernet(10/100 BASE T)
LAN Port	1port

HDD

Capacity	IDE interface, 1HDD(2.5")
----------	---------------------------

Export

USB	CF/SD
-----	-------

Power

Power Source	DC 10-30V, 3A
--------------	---------------

*Design and Product Specifications Subject to Change

Lekson Video

3214 North University Ave. #528 Provo, UT 84604

Tel: (801) 227-7818 | Fax: (801) 227-7819

Email: sales@leksonvideo.com | www.leksonvideo.com

Intelligent Public View Monitors



...the convergence of Marketing and Surveillance.

The Intelligent Public View Monitor of I-PVM is one of the most versatile and powerful security monitors available. The concept behind the I-PVM is to have the ability to inform and protect combining a built-in surveillance camera and a built-in multimedia player into one high resolution LCD monitor. The multimedia player will play files from a USB Memory Card or Compact Flash Card and surveillance camera can be

shown at the same time through a PIP window. The I-PVM is a perfect application for retail, education, corporate campuses, or public safety. Here are some of the features:

Multiple Video Inputs - Seven different video modes (AV1, AV2, S-Video, VGA, Camera, DVI, and Multimedia) allow the monitor to be used in many different applications

Built-in Multimedia Player - Play avi and windows media files from a USB Memory Card or Compact Flash Card located in the back of the monitor

Built-in CCTV Camera - Discreetly placed camera below the LCD screen has it's own BNC output for constant recording no matter what video mode the monitor is set in

Picture In Picture - Choose to have the camera, AV1, or AV2 input shown in PIP that can be activated by motion sensor or constantly on. Show advertising and surveillance view

Built-in Speakers - Two built-in speakers enhance presentations adding audio options

RJ45 Network Connection - Connect securely through any web browser to change any setting you can change with the remote control. Also upload and schedule files to mulimediaa player.

IP-Enabled Version Only



Quick Reference Guidepage 54

Intelligent Public View Monitors

PLM201 20" I-PVM55

PLM230 23" I-PVM57

PLM260 26" I-PVM59

PLM320 32" I-PVM61

PLM370 37" I-PVM63

PLM420 42" I-PVM65

IP Enabled Intelligent Public View Monitors

PLM201N 20.1" IP-Enabled I-PVM67

PLM230N 23" IP-Enabled I-PVM69

PLM260N 26" IP-Enabled I-PVM.....71

PLM320N 32" IP-Enabled I-PVM.....73

PLM370N 37" IP-Enabled I-PVM.....75

PLM420N 42" IP-Enabled I-PVM.....77



Public View Monitors Quick Reference Guide

	Panel Size	Inputs/Outputs	IP Enabled	Multimedia	PIP	Resolution	Contrast Ratio	Brightness	Aspect Ratio	Viewing Angle	Response Time	Comb Filter
PLM201	20.1"	2 BNC Looping, 1 VGA, 1 S-Video, 2 Audio Looping	No	Yes	Yes	800 x 600	600:1	450 cd/m ²	4:3	H: 160 V:120	16 ms	YES
PLM230	23"	2 BNC Looping, 1 VGA, 1 S-Video, 2 Audio Looping	No	Yes	Yes	1366 x 768	1200:1	450 cd/m ²	16:9	H: 178 V:178	25 ms	YES
PLM260	26"	2 BNC Looping, 1 VGA, 1 S-Video, 2 Audio Looping	No	Yes	Yes	1366x 768	800:1	500 cd/m ²	16:9	H: 176 V:176	20 ms	YES
PLM320	32"	2 BNC Looping, 1 VGA, 1 S-Video, 2 Audio Looping	No	Yes	Yes	1366 x 768	1600:1	500 cd/m ²	16:9	H: 178 V:178	18 ms	YES
PLM360	36"	2 BNC Looping, 1 VGA, 1 S-Video, 2 Audio Looping	No	Yes	Yes	1366 x 768	1600:1	500 cd/m ²	16:9	H: 178 V:178	18 ms	YES
PLM420	42"	2 BNC Looping, 1 VGA, 1 S-Video, 2 Audio Looping	No	Yes	Yes	1366x 768	800:1	500 cd/m ²	16:9	H: 178 V:178	18 ms	YES
PLM201N	20.1"	2 BNC Looping, 1 VGA, 1 S-Video, 2 Audio Looping	Yes	Yes	Yes	800 x 600	600:1	450 cd/m ²	4:3	H: 160 V:120	16 ms	YES
PLM230N	23"	2 BNC Looping, 1 VGA, 1 S-Video, 2 Audio Looping	Yes	Yes	Yes	1366 x 768	1200:1	450 cd/m ²	16:9	H: 178 V:178	25 ms	YES
PLM260N	26"	2 BNC Looping, 1 VGA, 1 S-Video, 2 Audio Looping	Yes	Yes	Yes	1366x 768	800:1	500 cd/m ²	16:9	H: 176 V:176	20 ms	YES
PLM320N	32"	2 BNC Looping, 1 VGA, 1 S-Video, 2 Audio Looping	Yes	Yes	Yes	1366 x 768	1600:1	500 cd/m ²	16:9	H: 178 V:178	18 ms	YES
PLM360N	36"	2 BNC Looping, 1 VGA, 1 S-Video, 2 Audio Looping	Yes	Yes	Yes	1366 x 768	1600:1	500 cd/m ²	16:9	H: 178 V:178	18 ms	YES
PLM420N	42"	2 BNC Looping, 1 VGA, 1 S-Video, 2 Audio Looping	Yes	Yes	Yes	1366x 768	800:1	500 cd/m ²	16:9	H: 178 V:178	18 ms	YES
PLM150CH	15"	1 BNC Looping, 1 VGA, 1 S-Video, 1 Audio	No	No	No	1024 x 768	450:1	250 cd/m ²	4:3	H: 130 V:110	13 ms	YES
PLM170CH	17"	1 BNC Looping, 1 VGA, 1 S-Video, 1 Audio	No	No	No	1280 x 1024	700:1	300 cd/m ²	5:4	H: 150 V:135	10 ms	YES
PLM190CH	19"	1 BNC Looping, 1 VGA, 1 S-Video, 2 Audio	No	No	No	1280 x 1024	700:1	300 cd/m ²	5:4	H: 150 V:135	9 ms	YES
PLM201ST	20.1"	2 BNC Looping, 1 VGA, 1 S-Video, 2 Audio Looping	No	No	No	800 x 600	600:1	450 cd/m ²	4:3	H: 160 V:120	16 ms	YES
PLM230ST	23"	2 BNC Looping, 1 VGA, 1 S-Video, 2 Audio Looping	No	No	No	1366 x 768	1200:1	450 cd/m ²	16:9	H: 178 V:178	25 ms	YES
PLM260ST	26"	2 BNC Looping, 1 VGA, 1 S-Video, 2 Audio Looping	No	No	No	1366x 768	800:1	500 cd/m ²	16:9	H: 176 V:176	20 ms	YES
PLM320ST	32"	2 BNC Looping, 1 VGA, 1 S-Video, 2 Audio Looping	No	No	No	1366 x 768	1600:1	500 cd/m ²	16:9	H: 178 V:178	18 ms	YES
PLM360ST	36"	2 BNC Looping, 1 VGA, 1 S-Video, 2 Audio Looping	No	No	No	1366 x 768	1600:1	500 cd/m ²	16:9	H: 178 V:178	18 ms	YES
PLM420ST	42"	2 BNC Looping, 1 VGA, 1 S-Video, 2 Audio Looping	No	No	No	1366x 768	800:1	500 cd/m ²	16:9	H: 178 V:178	18 ms	YES



Call 1-888-LEKSON1 to order www.leksonvideo.com

Special Features include:

Ultra Bright LCD Screen

Built-in WDR Camera with 1/3" Sony Input Sensor High Resolution Color CCD (Varifocal Camera Optional)

Built-in USB 2.0 and Compact Flash Card multimedia player plays avi and wmv files

3D Comb Filter, Deinterlace, PIP Function

Stylish design

Light sensor conserves energy by putting monitor into sleep mode when the lights go out

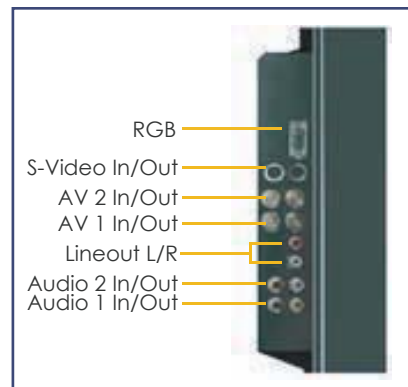
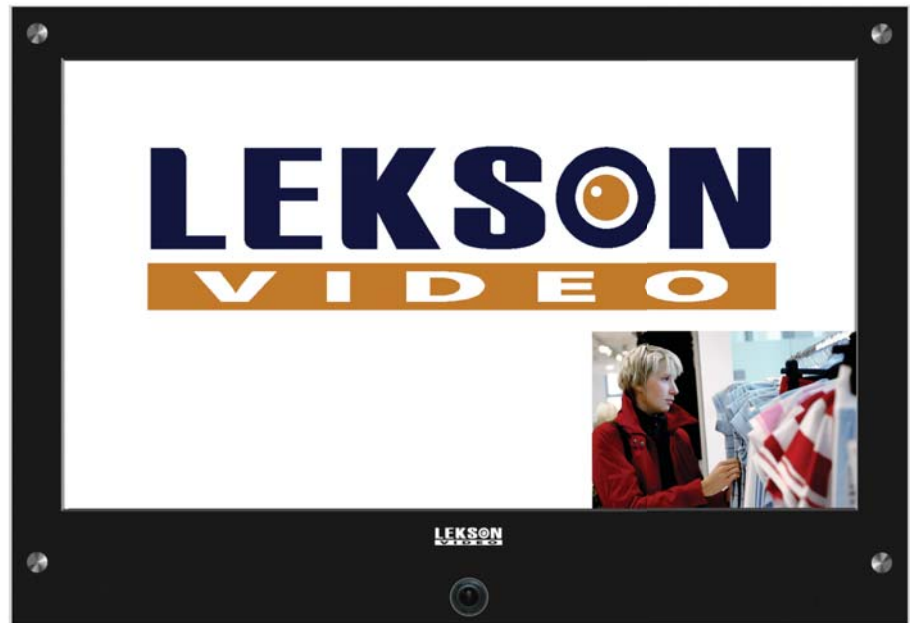
Built-in surveillance camera continues to monitor no matter what mode the monitor is in Internal 2W speakers

PVM Viewer Software (inlcuded) allows the encoded internal camera to be displayed on a PC

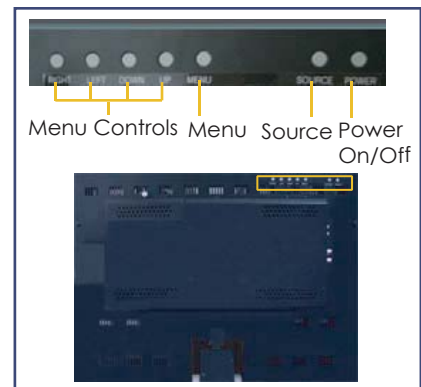
Easy camera directional adjustment

Internal 2W Speakers

20.1" Intelligent Public View Monitor



Side View (Connectors)



Rear View (Controls)

General

Display Type	LCD TFT (Thin-Film Transistor)
Size	20 inches
Signal system	525lines NTSC; 625lines PAL
Aspect Ratio	4:3

Panel

Pixel Pitch	0.510mm
Viewing Angle (Wide) (CR 5)	Horizontal: +/-80 (Left/Right), Vertical: +/-60 (Up/Down)
Display Colors	16.2M/6 bit + FRC
Contrast	600:1 (Typical)
Brightness	450cd/m ²
Color Temperature	Selectable at 6500°K / 9300°K
Response Time	16ms (typical)
Scanning Frequency	Horizontal: 31 ~ 82KHz, Vertical: 56 ~ 75Hz
Lamp Life Time	50,000Hrs (Min)
Display Resolution	800 x 600 (SVGA)
Surface Treatment	Hard coating(3H), Anti-glare

Connections

VGA Input	RGB Analog 0.7Vp-p, 15-pin D-sub Connector
Audio In/Out	Mono Jack(2)
Speaker	Internal Type 8Ω 2W (2) (Option)
Video In/Out	2 Composite Video BNC Looping, 1 S-Video Looping, 1 VGA
CF Card	CF Card Connector
USB 2.0	4 pin USB Connector

Functions

Auto Sync Format Detection	NTSC/PAL/SECAM
OSD Language	6 Languages (English, Francis, Italian, Germany, Spanish, Portuguese)
Other Functions	3D Comb Filter, De-interlace
User Controls	Auto Adjust, Brightness, Contrast, Color, Over Scan, Volume, Language, Auto Power, Power latching, Key Lock, Motion Detection
Multimedia Supported Types	Audio: MP3 Video: JPEG, M-JPEG, MPEG-1, MPEG-2, MPEG-4, AVI

Electrical

Input Voltage	15VDC, 4.67A
Input Signal	0.5 to 2.0Vp-p
Input/Output Impedances	75Ω
Power Consumption	56 Watts (Includes Speaker)
Power Management	VESA DPMS Compatible

Environment

Operating temperature	32°F-104°F (0°C~40°C)
-----------------------	-----------------------

WDR Camera

Input Sensor	Sony 1/3" WDR High Resolution Color CCD
Resolution	470 TV Lines
Signal to Noise Ratio	Greater than 48dB (AGC Off)
Sensitivity	0.5Lux at F1.2 Lens
Lens	3.8mm - 9.5mm Vari-Focal (F1.2)

Varifocal Camera Optional - PLM201V

Input Sensor	1/3in. Interline Transfer type color CCD (SONY) Day & Night
Resolution	540 TV Lines
Signal-to-noise Ratio	Greater than 50dB (AGC off)
Sensitivity	0.3Lux, F1.2 Lens
Lens	3.8mm-9.5mm Vari-Focal (F1.2)

*Design and specifications are subject to change without notice

Lekson Video

3214 North University Ave. #528, Provo, UT 84604

Tel: 1-888-LEKSON1 | Fax: (801) 227-7819

WWW.LEKSONVIDEO.COM

Special Features include:

Ultra Bright LCD Screen

Built-in WDR Camera with 1/3" Sony Input Sensor High Resolution Color CCD (Varifocal Camera Optional)

Built-in USB 2.0 and Compact Flash Card multimedia player plays avi and wmv files

3D Comb Filter, Deinterlace, PIP Function

Stylish design

Light sensor conserves energy by putting monitor into sleep mode when the lights go out

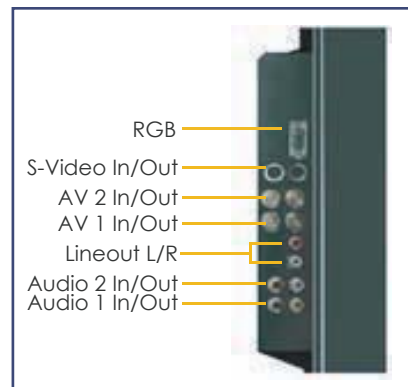
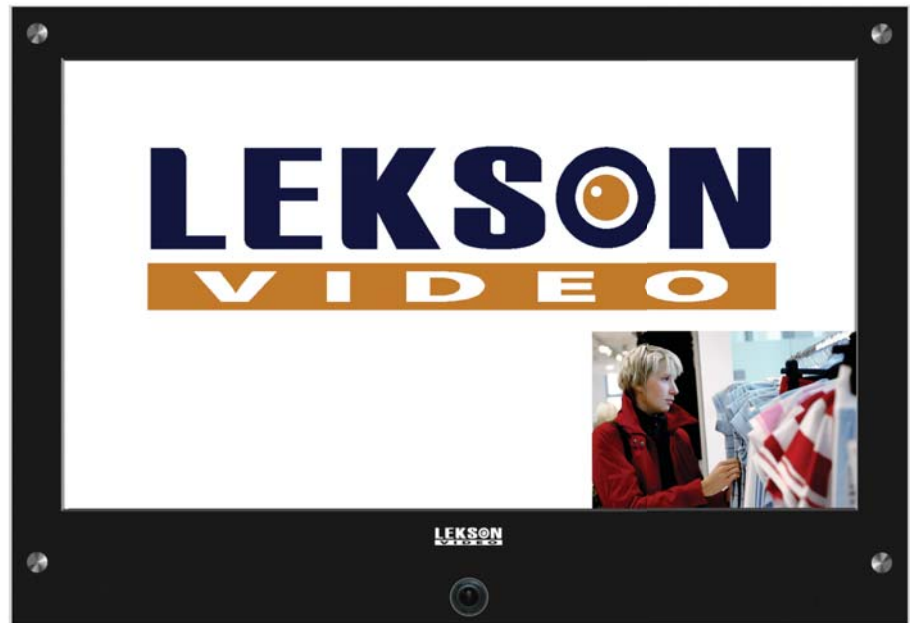
Built-in surveillance camera continues to monitor no matter what mode the monitor is in Internal 2W speakers

PVM Viewer Software (inlcuded) allows the encoded internal camera to be displayed on a PC

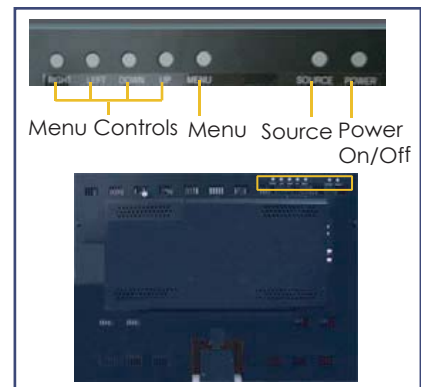
Easy camera directional adjustment

Internal 2W Speakers

23" Intelligent Public View Monitor



Side View (Connectors)



Rear View (Controls)

**General**

Display Type	LCD TFT (Thin-Film Transistor)
Size	23 inches
Signal system	525lines NTSC; 625lines PAL
Aspect Ratio	16 : 9

Panel

Pixel Pitch	0.327mm
Viewing Angle (Wide) (CR 5)	Horizontal: +/-89 (Left/Right), Vertical: +/-89 (Up/Down)
Display Colors	16.777million colors(8bit)
Contrast	1200:1(Typical)
Brightness	450cd/m ²
Color Temperature	10000°K
Response Time	8ms(typical)
Scanning Frequency	Horizontal: 31 ~ 82KHz, Vertical: 56 ~ 75Hz
Lamp Life Time	50,000Hrs(Min)
Display Resolution	1366 x 768 (WXGA)
Surface Treatment	Hard coating(3H), Anti-glare

Connections

VGA Input	RGB Analog 0.7Vp-p, 15-pin D-sub Connector
Audio In/Out	Mono Jack(2)
Speaker	Internal Type 8Ω 2W (2) (Option)
Video In/Out	2 Composite Video BNC Looping, 1 S-Video Looping, 1 VGA
CF Card	CF Card Connector
USB 2.0	4 pin USB Connector

Functions

Auto Sync Format Detection	NTSC/PAL/SECAM
OSD Language	6 Languages (English, Francis, Italian, Germany, Spanish, Portuguese)
Other Functions	3D Comb Filter, De-interlace
User Controls	Auto Adjust, Brightness, Contrast, Color, Over Scan, Volume, Language, Auto Power, Power latching, Key Lock, Motion Detection
Multimedia Supported Types	Audio: MP3 Video: JPEG, M-JPEG, MPEG-1, MPEG-2, MPEG-4, AVI

Electrical

Input Voltage	110-220VAC, 50/60Hz
Input Signal	0.5 to 2.0Vp-p
Input/Output Impedances	75Ω
Power Consumption	88 Watts (Includes Speaker)
Power Management	VESA DPMS Compatible

Environment

Operating temperature	32°F-104°F (0°C~40°C)
-----------------------	-----------------------

WDR Camera

Input Sensor	Sony 1/3" WDR High Resolution Color CCD
Resolution	470 TV Lines
Signal to Noise Ratio	Greater than 48dB (AGC Off)
Sensitivity	0.5Lux at F1.2 Lens
Lens	3.8mm - 9.5mm Vari-Focal (F1.2)

Varifocal Camera Optional - PLM230V

Input Sensor	1/3in. Interline Transfer type color CCD (SONY) Day & Night
Resolution	540 TV Lines
Signal-to-noise Ratio	Greater than 50dB (AGC off)
Sensitivity	0.3Lux, F1.2 Lens
Lens	3.8mm-9.5mm Vari-Focal (F1.2)

*Design and specifications are subject to change without notice

Lekson Video

3214 North University Ave. #528, Provo, UT 84604

Tel: 1-888-LEKSON1 | Fax: (801) 227-7819

WWW.LEKSONVIDEO.COM

Special Features include:

Ultra Bright LCD Screen

Built-in WDR Camera with 1/3" Sony Input Sensor High Resolution Color CCD (Varifocal Camera Optional)

Built-in USB 2.0 and Compact Flash Card multimedia player plays avi and wmv files

3D Comb Filter, Deinterlace, PIP Function

Stylish design

Light sensor conserves energy by putting monitor into sleep mode when the lights go out

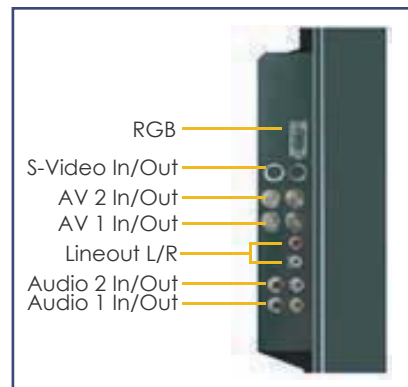
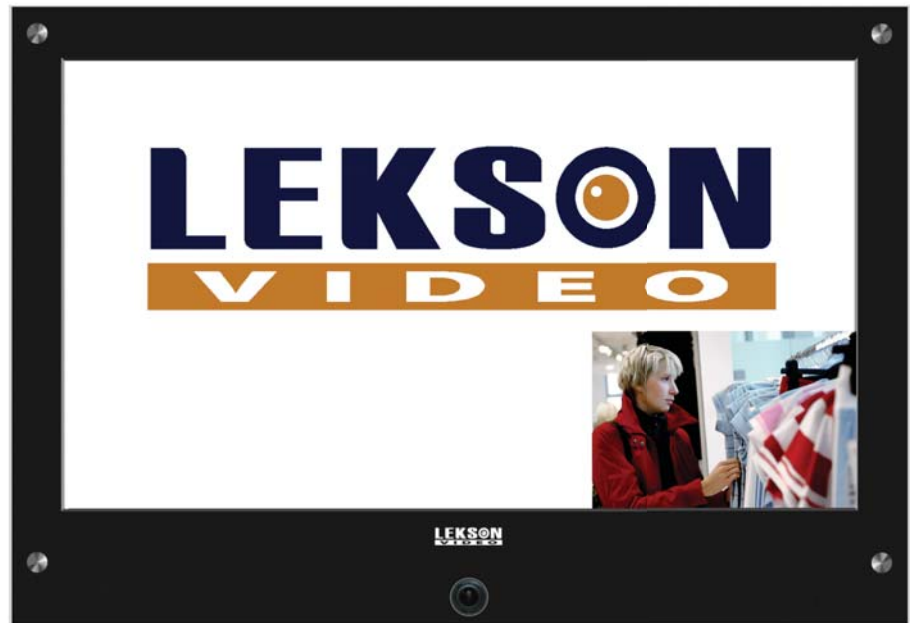
Built-in surveillance camera continues to monitor no matter what mode the monitor is in Internal 2W speakers

PVM Viewer Software (inlcuded) allows the encoded internal camera to be displayed on a PC

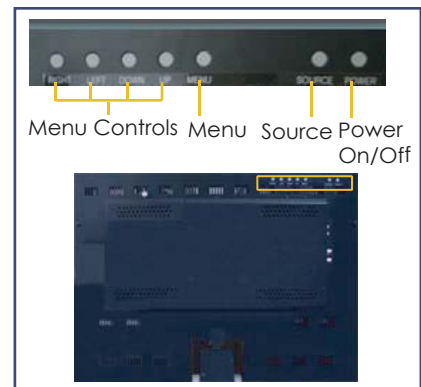
Easy camera directional adjustment

Internal 2W Speakers

26" Intelligent Public View Monitor



Side View (Connectors)



Rear View (Controls)

**General**

Display Type	LCD TFT (Thin-Film Transistor)
Size	26 inches
Signal system	525lines NTSC; 625lines PAL
Aspect Ratio	16 : 9

Panel

Pixel Pitch	0.4215mm
Viewing Angle (Wide) (CR 5)	Horizontal: +/-88 (Left/Right), Vertical: +/-88 (Up/Down)
Display Colors	16.777million colors(8bit)
Contrast	800:1 (Typical)
Brightness	500cd/m ²
Color Temperature	10000°K
Response Time	20ms (typical)
Scanning Frequency	Horizontal: 39.45 ~ 41.10KHz, Vertical: 48 ~ 52Hz
Lamp Life Time	60,000Hrs (Min)
Display Resolution	1366 x 768 (WXGA)
Surface Treatment	Hard coating(3H), Anti-glare

Connections

VGA Input	RGB Analog 0.7Vp-p, 15-pin D-sub Connector
Audio In/Out	Mono Jack(2)
Speaker	Internal Type 8Ω 2W (2) (Option)
Video In/Out	2 Composite Video BNC Looping, 1 S-Video Looping, 1 VGA
CF Card	CF Card Connector
USB 2.0	4 pin USB Connector

Functions

Auto Sync Format Detection	NTSC/PAL/SECAM
OSD Language	6 Languages (English, Francis, Italian, Germany, Spanish, Portuguese)
Other Functions	3D Comb Filter, De-interlace
User Controls	Auto Adjust, Brightness, Contrast, Color, Over Scan, Volume, Language, Auto Power, Power latching, Key Lock, Motion Detection
Multimedia Supported Types	Audio: MP3 Video: JPEG, M-JPEG, MPEG-1, MPEG-2, MPEG-4, AVI

Electrical

Input Voltage	24VDC, 5.42A
Input Signal	0.5 to 2.0Vp-p
Input/Output Impedances	75Ω
Power Consumption	120 Watts (Includes Speaker)
Power Management	VESA DPMS Compatible

Environment

Operating temperature	32°F-104°F (0°C~40°C)
-----------------------	-----------------------

WDR Camera

Input Sensor	Sony 1/3" WDR High Resolution Color CCD
Resolution	470 TV Lines
Signal to Noise Ratio	Greater than 48dB (AGC Off)
Sensitivity	0.5Lux at F1.2 Lens
Lens	3.8mm - 9.5mm Vari-Focal (F1.2)

Varifocal Camera Optional - PLM260V

Input Sensor	1/3in. Interline Transfer type color CCD (SONY) Day & Night
Resolution	540 TV Lines
Signal-to-noise Ratio	Greater than 50dB (AGC off)
Sensitivity	0.3Lux, F1.2 Lens
Lens	3.8mm-9.5mm Vari-Focal (F1.2)

*Design and specifications are subject to change without notice

Lekson Video

3214 North University Ave. #528, Provo, UT 84604

Tel: 1-888-LEKSON1 | Fax: (801) 227-7819

WWW.LEKSONVIDEO.COM

Special Features include:

Ultra Bright LCD Screen

Built-in WDR Camera with 1/3" Sony Input Sensor High Resolution Color CCD (Varifocal Camera Optional)

Built-in USB 2.0 and Compact Flash Card multimedia player plays avi and wmv files

3D Comb Filter, Deinterlace, PIP Function

Stylish design

Light sensor conserves energy by putting monitor into sleep mode when the lights go out

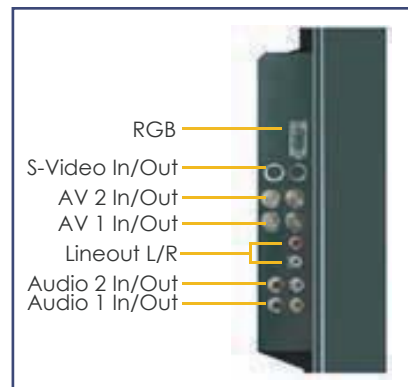
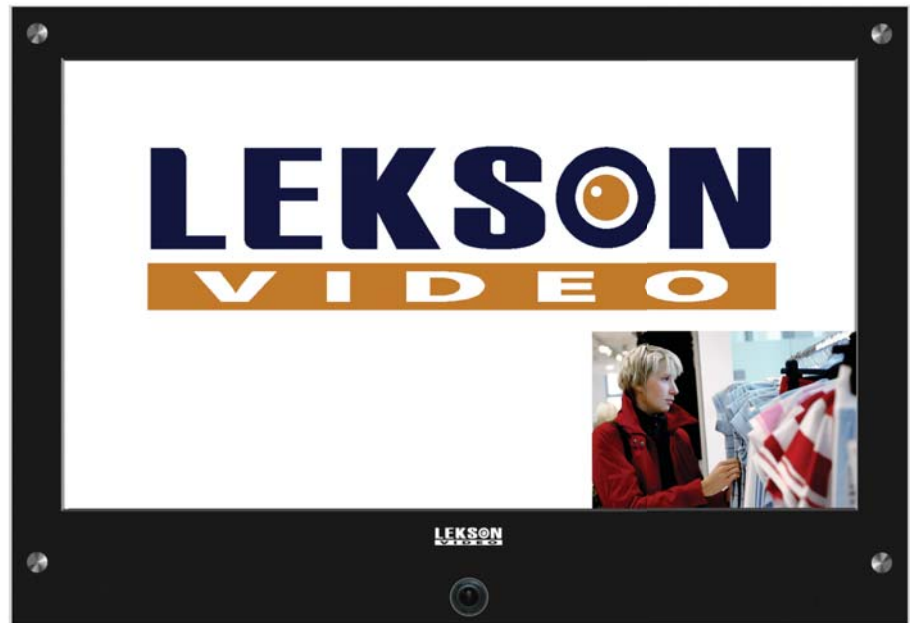
Built-in surveillance camera continues to monitor no matter what mode the monitor is in Internal 2W speakers

PVM Viewer Software (inlcuded) allows the encoded internal camera to be displayed on a PC

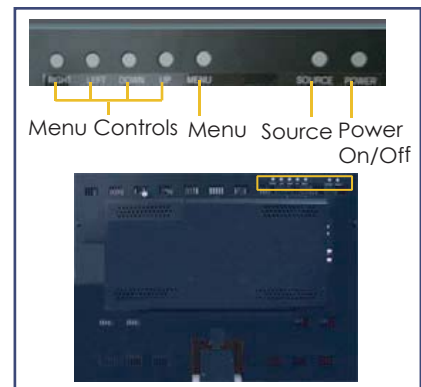
Easy camera directional adjustment

Internal 2W Speakers

32" Intelligent Public View Monitor



Side View (Connectors)



Rear View (Controls)

General

Display Type	LCD TFT (Thin-Film Transistor)
Size	32 inches
Signal system	525lines NTSC; 625lines PAL
Aspect Ratio	16 : 9

Panel

Pixel Pitch	0.170mm x 0.510mm x RGB
Viewing Angle (Wide) (CR 5)	Horizontal: +/-89 (Left/Right), Vertical: +/-89 (Up/Down)
Display Colors	16.777million colors(8bit)
Contrast	1600:1(Typical)
Brightness	500cd/m ²
Color Temperature	10000°K
Response Time	18ms(typical)
Scanning Frequency	Horizontal: 45-50 Khz, Vertical: 47-63 Hz
Lamp Life Time	60,000Hrs(Min)
Display Resolution	1366 x 768 (WXGA)
Surface Treatment	Hard coating(3H), Anti-glare

Connections

VGA Input	RGB Analog 0.7Vp-p, 15-pin D-sub Connector
Audio In/Out	Mono Jack(2)
Speaker	Internal Type 8Ω 2W (2) (Option)
Video In/Out	2 Composite Video BNC Looping, 1 S-Video Looping, 1 VGA
CF Card	CF Card Connector
USB 2.0	4 pin USB Connector

Functions

Auto Sync Format Detection	NTSC/PAL/SECAM
OSD Language	6 Languages (English, Francis, Italian, Germany, Spanish, Portuguese)
Other Functions	3D Comb Filter, De-interlace
User Controls	Auto Adjust, Brightness, Contrast, Color, Over Scan, Volume, Language, Auto Power, Power latching, Key Lock, Motion Detection
Multimedia Supported Types	Audio: MP3 Video: JPEG, M-JPEG, MPEG-1, MPEG-2, MPEG-4, AVI

Electrical

Input Voltage	SMPS (AC 100 ~240V, 50/60Hz MAX 2.5A)
Input Signal	0.5 to 2.0Vp-p
Input/Output Impedances	75Ω
Power Consumption	150 Watts (Includes Speaker)
Power Management	VESA DPMS Compatible

Environment

Operating temperature	32°F-104°F (0°C~40°C)
-----------------------	-----------------------

WDR Camera

Input Sensor	Sony 1/3" WDR High Resolution Color CCD
Resolution	470 TV Lines
Signal to Noise Ratio	Greater than 48dB (AGC Off)
Sensitivity	0.5Lux at F1.2 Lens
Lens	3.8mm - 9.5mm Vari-Focal (F1.2)

Varifocal Camera Optional - PLM320V

Input Sensor	1/3in. Interline Transfer type color CCD (SONY) Day & Night
Resolution	540 TV Lines
Signal-to-noise Ratio	Greater than 50dB (AGC off)
Sensitivity	0.3Lux, F1.2 Lens
Lens	3.8mm-9.5mm Vari-Focal (F1.2)

*Design and specifications are subject to change without notice

Lekson Video

3214 North University Ave. #528, Provo, UT 84604

Tel: 1-888-LEKSON1 | Fax: (801) 227-7819

WWW.LEKSONVIDEO.COM

Special Features include:

Ultra Bright LCD Screen

Built-in WDR Camera with 1/3" Sony Input Sensor High Resolution Color CCD (Varifocal Camera Optional)

Built-in USB 2.0 and Compact Flash Card multimedia player plays avi and wmv files

3D Comb Filter, Deinterlace, PIP Function

Stylish design

Light sensor conserves energy by putting monitor into sleep mode when the lights go out

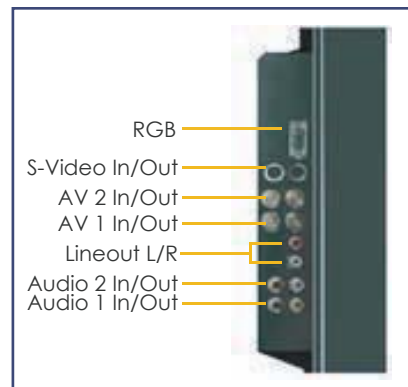
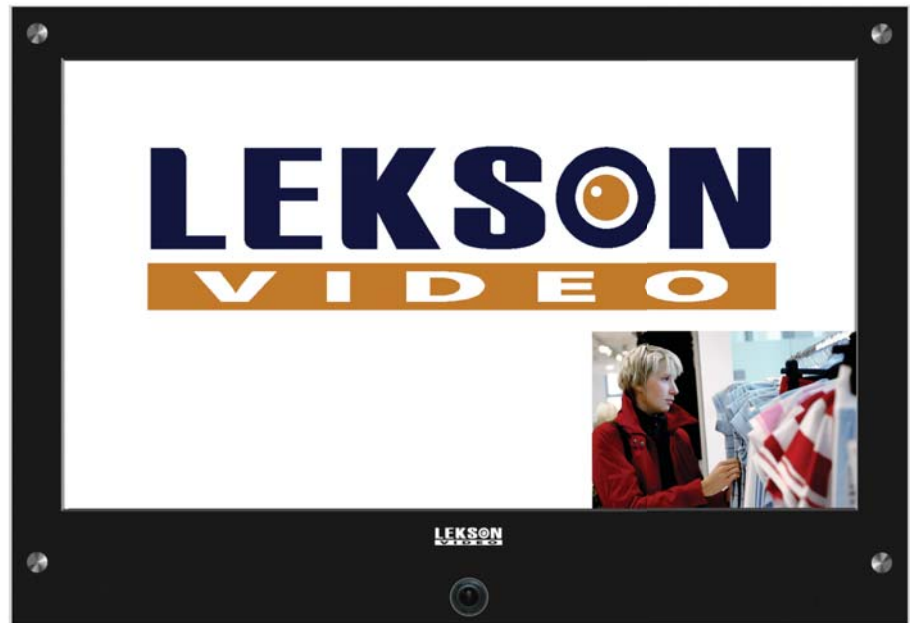
Built-in surveillance camera continues to monitor no matter what mode the monitor is in Internal 2W speakers

PVM Viewer Software (inlcuded) allows the encoded internal camera to be displayed on a PC

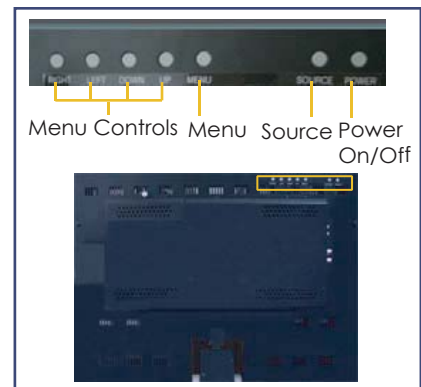
Easy camera directional adjustment

Internal 2W Speakers

37" Intelligent Public View Monitor



Side View (Connectors)



Rear View (Controls)

**General**

Display Type	LCD TFT (Thin-Film Transistor)
Size	37 inches
Signal system	525lines NTSC; 625lines PAL
Aspect Ratio	16 : 9

Panel

Pixel Pitch	0.200mm x 0.600mm x RGB
Viewing Angle (Wide) (CR 5)	Horizontal: +/-89 (Left/Right), Vertical: +/-89 (Up/Down)
Display Colors	16.777million colors(8bit)
Contrast	1600:1(Typical)
Brightness	500cd/m ²
Color Temperature	10000°K
Response Time	18ms(typical)
Scanning Frequency	Horizontal: 45-50 Khz, Vertical: 47-63 Hz
Lamp Life Time	60,000Hrs(Min)
Display Resolution	1366 x 768 (WXGA)
Surface Treatment	Hard coating(3H), Anti-glare

Connections

VGA Input	RGB Analog 0.7Vp-p, 15-pin D-sub Connector
Audio In/Out	Mono Jack(2)
Speaker	Internal Type 8Ω 2W (2) (Option)
Video In/Out	2 Composite Video BNC Looping, 1 S-Video Looping, 1 VGA
CF Card	CF Card Connector
USB 2.0	4 pin USB Connector

Functions

Auto Sync Format Detection	NTSC/PAL/SECAM
OSD Language	6 Languages (English, Francis, Italian, Germany, Spanish, Portuguese)
Other Functions	3D Comb Filter, De-interlace
User Controls	Auto Adjust, Brightness, Contrast, Color, Over Scan, Volume, Language, Auto Power, Power latching, Key Lock, Motion Detection
Multimedia Supported Types	Audio: MP3 Video: JPEG, M-JPEG, MPEG-1, MPEG-2, MPEG-4, AVI

Electrical

Input Voltage	SMPS (AC 100 ~240V, 50/60Hz MAX 2.5A)
Input Signal	0.5 to 2.0Vp-p
Input/Output Impedances	75Ω
Power Consumption	150 Watts (Includes Speaker)
Power Management	VESA DPMS Compatible

Environment

Operating temperature	32°F-104°F (0°C~40°C)
-----------------------	-----------------------

WDR Camera

Input Sensor	Sony 1/3" WDR High Resolution Color CCD
Resolution	470 TV Lines
Signal to Noise Ratio	Greater than 48dB (AGC Off)
Sensitivity	0.5Lux at F1.2 Lens
Lens	3.8mm - 9.5mm Vari-Focal (F1.2)

Varifocal Camera Optional - PLM370V

Input Sensor	1/3in. Interline Transfer type color CCD (SONY) Day & Night
Resolution	540 TV Lines
Signal-to-noise Ratio	Greater than 50dB (AGC off)
Sensitivity	0.3Lux, F1.2 Lens
Lens	3.8mm-9.5mm Vari-Focal (F1.2)

*Design and specifications are subject to change without notice

Lekson Video

3214 North University Ave. #528, Provo, UT 84604

Tel: 1-888-LEKSON1 | Fax: (801) 227-7819

WWW.LEKSONVIDEO.COM

Special Features include:

Ultra Bright LCD Screen

Built-in WDR Camera with 1/3" Sony Input Sensor High Resolution Color CCD (Varifocal Camera Optional)

Built-in USB 2.0 and Compact Flash Card multimedia player plays avi and wmv files

3D Comb Filter, Deinterlace, PIP Function

Stylish design

Light sensor conserves energy by putting monitor into sleep mode when the lights go out

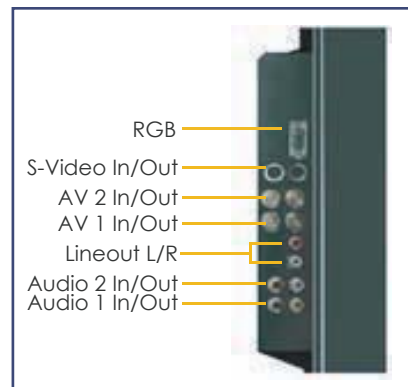
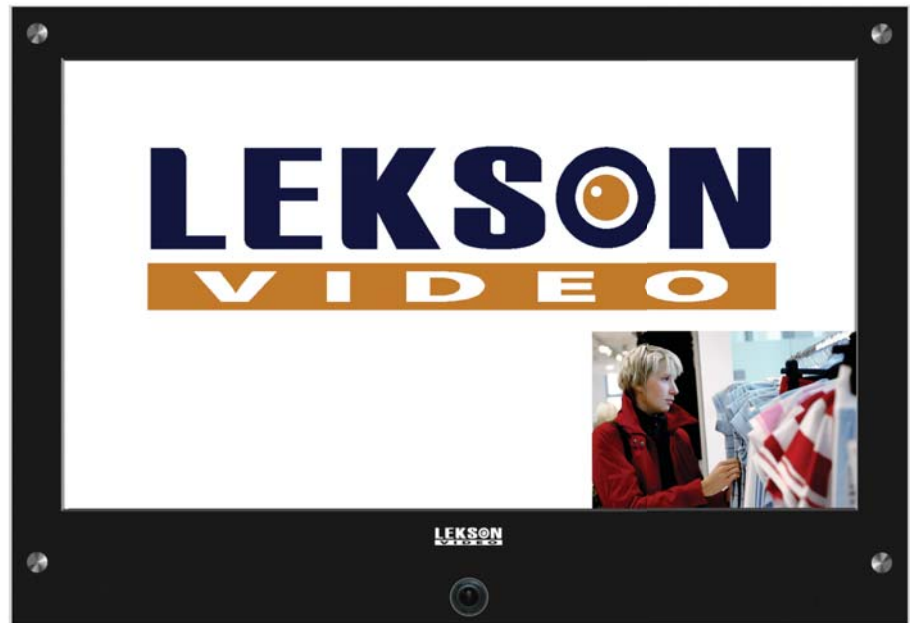
Built-in surveillance camera continues to monitor no matter what mode the monitor is in Internal 2W speakers

PVM Viewer Software (inlcuded) allows the encoded internal camera to be displayed on a PC

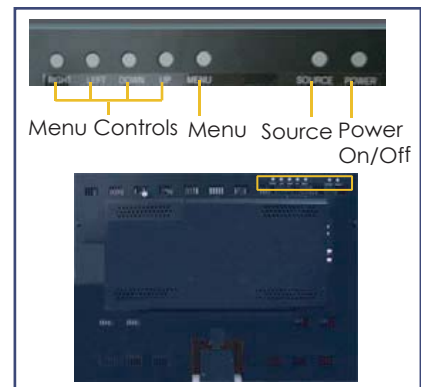
Easy camera directional adjustment

Internal 2W Speakers

42" Intelligent Public View Monitor



Side View (Connectors)



Rear View (Controls)

**General**

Display Type	LCD TFT (Thin-Film Transistor)
Size	42 inches
Signal system	525lines NTSC; 625lines PAL
Aspect Ratio	16 : 9

Panel

Pixel Pitch	0.227mm x 0.681mm x RGB
Viewing Angle (Wide) (CR 5)	Horizontal: +/-89 (Left/Right), Vertical: +/-89 (Up/Down)
Display Colors	16.777million colors(8bit)
Contrast	800:1(Typical)
Brightness	500cd/m ²
Color Temperature	10000°K
Response Time	18ms(typical)
Scanning Frequency	Horizontal: 45-50 Khz, Vertical: 47-63 Hz
Lamp Life Time	60,000Hrs(Min)
Display Resolution	1366 x 768 (WXGA)
Surface Treatment	Hard coating(3H), Anti-glare

Connections

VGA Input	RGB Analog 0.7Vp-p, 15-pin D-sub Connector
Audio In/Out	Mono Jack(2)
Speaker	Internal Type 8Ω 2W (2) (Option)
Video In/Out	2 Composite Video BNC Looping, 1 S-Video Looping, 1 VGA
CF Card	CF Card Connector
USB 2.0	4 pin USB Connector

Functions

Auto Sync Format Detection	NTSC/PAL/SECAM
OSD Language	6 Languages (English, Francis, Italian, Germany, Spanish, Portuguese)
Other Functions	3D Comb Filter, De-interlace
User Controls	Auto Adjust, Brightness, Contrast, Color, Over Scan, Volume, Language, Auto Power, Power latching, Key Lock, Motion Detection
Multimedia Supported Types	Audio: MP3 Video: JPEG, M-JPEG, MPEG-1, MPEG-2, MPEG-4, AVI

Electrical

Input Voltage	SMPS (AC 100 ~240V, 50/60Hz MAX 2.5A)
Input Signal	0.5 to 2.0Vp-p
Input/Output Impedances	75Ω
Power Consumption	200Watts, Standby 5Watts (idle: 5W)VESA DPMS Compatible
Power Management	VESA DPMS Compatible

Environment

Operating temperature	32°F-104°F (0°C~40°C)
-----------------------	-----------------------

WDR Camera

Input Sensor	Sony 1/3" WDR High Resolution Color CCD
Resolution	470 TV Lines
Signal to Noise Ratio	Greater than 48dB (AGC Off)
Sensitivity	0.5Lux at F1.2 Lens
Lens	3.8mm - 9.5mm Vari-Focal (F1.2)

Varifocal Camera Optional - PLM420V

Input Sensor	1/3in. Interline Transfer type color CCD (SONY) Day & Night
Resolution	540 TV Lines
Signal-to-noise Ratio	Greater than 50dB (AGC off)
Sensitivity	0.3Lux, F1.2 Lens
Lens	3.8mm-9.5mm Vari-Focal (F1.2)

*Design and specifications are subject to change without notice

Lekson Video

3214 North University Ave. #528, Provo, UT 84604

Tel: 1-888-LEKSON1 | Fax: (801) 227-7819

WWW.LEKSONVIDEO.COM

Special Features include:

Ultra Bright LCD Screen

Built-in WDR Camera with 1/3" Sony Input Sensor High Resolution Color CCD (Varifocal Camera Optional)

Built-in USB 2.0 and Compact Flash Card multimedia player plays avi and wmv files

RJ-45 Ethernet Port allows complete control of the monitor through a secured internet connection from a web browser

Remotely upload files to the USB or C/F Card, create and schedule playlists, and change monitor settings using web browser

Multi-PVM Manager allows files to be uploaded to multiple PVMs at the same time

Easy camera directional adjustment

Built-in surveillance camera continues to monitor no matter what mode the monitor is in

PVM Viewer Software (included) allows the encoded internal camera to be displayed on a PC

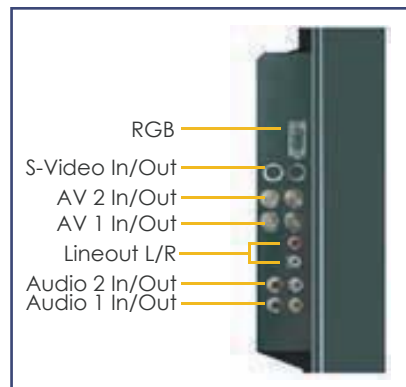
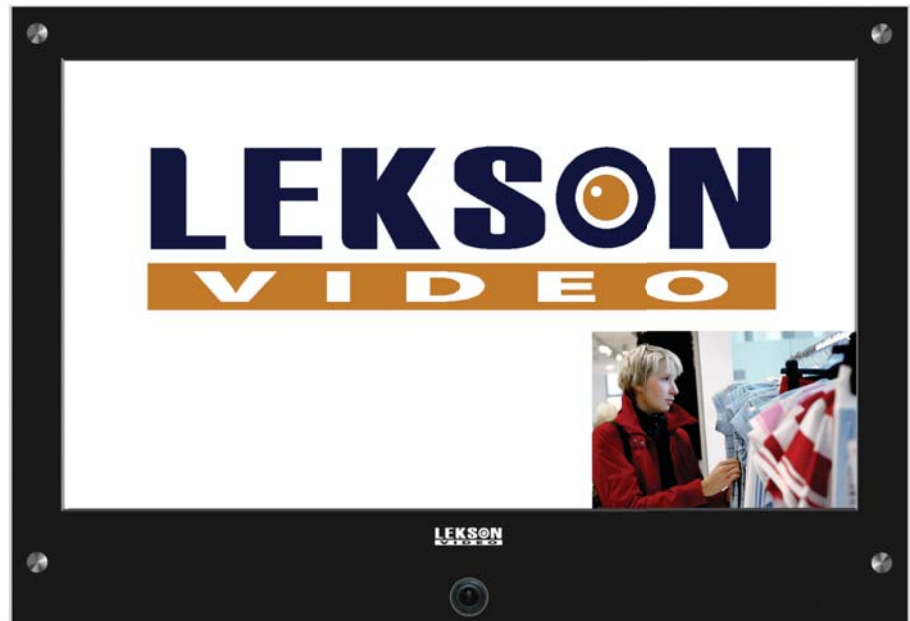
3D Comb Filter, Deinterlace, PIP Function

Stylish surveillance design

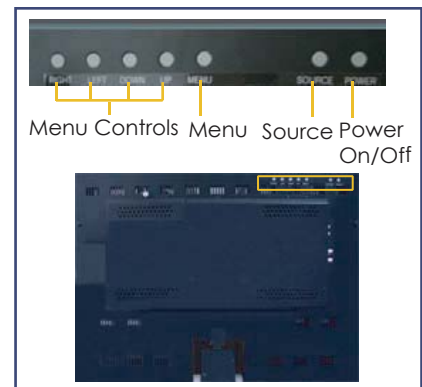
Light sensor conserves energy by putting monitor into sleep mode when the lights go out

Internal 2W speakers

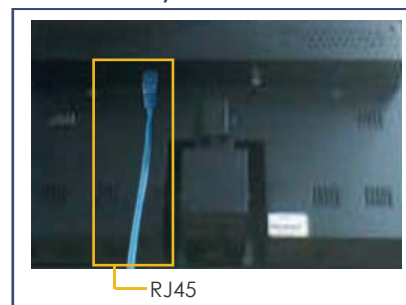
20.1" IP-Enabled Intelligent Public View Monitor



Side View (Connectors)



Rear View (Controls)



Ethernet Connection

**General**

Display Type	LCD TFT (Thin-Film Transistor)
Size	20.1 inches
Signal system	525lines NTSC; 625lines PAL
Aspect Ratio	4:3

Panel

Pixel Pitch	0.510mm
Viewing Angle (Wide) (CR 5)	Horizontal: +/-80 (Left/Right), Vertical: +/-60 (Up/Down)
Display Colors	16.2M/6 bit + FRC
Contrast	600:1 (Typical)
Brightness	450cd/m ²
Color Temperature	Selectable at 6500°K / 9300°K
Response Time	16ms (typical)
Scanning Frequency	Horizontal: 31 ~ 82KHz, Vertical: 56 ~ 75Hz
Lamp Life Time	50,000Hrs (Min)
Display Resolution	800 x 600 (SVGA)
Surface Treatment	Hard coating(3H), Anti-glare

Connections

VGA Input	RGB Analog 0.7Vp-p, 15-pin D-sub Connector
Audio In/Out	Mono Jack(2)
Speaker	Internal Type 8Ω 2W (2) (Option)
Video In/Out	2 Composite Video BNC Looping, 1 S-Video Looping, 1 VGA
CF Card	CF Card Connector
USB 2.0	4 pin USB Connector

Functions

Auto Sync Format Detection	NTSC/PAL/SECAM
OSD Language	6 Languages (English, Francis, Italian, Germany, Spanish, Portuguese)
Other Functions	3D Comb Filter, De-interlace
User Controls	Auto Adjust, Brightness, Contrast, Color, Over Scan, Volume, Language, Auto Power, Power latching, Key Lock, Motion Detection
Multimedia Supported Types	Audio: MP3 Video: JPEG, M-JPEG, MPEG-1, MPEG-2, MPEG-4, AVI

Electrical

Input Voltage	15VDC, 4.67A
Input Signal	0.5 to 2.0Vp-p
Input/Output Impedances	75Ω
Power Consumption	56 Watts (Includes Speaker)
Power Management	VESA DPMS Compatible

Environment

Operating temperature	32°F-104°F (0°C~40°C)
-----------------------	-----------------------

WDR Camera

Input Sensor	Sony 1/3" WDR High Resolution Color CCD
Resolution	470 TV Lines
Signal to Noise Ratio	Greater than 48dB (AGC Off)
Sensitivity	0.5Lux at F1.2 Lens
Lens	3.8mm - 9.5mm Vari-Focal (F1.2)

Varifocal Camera Optional - PLM201NV

Input Sensor	1/3in. Interline Transfer type color CCD (SONY) Day & Night
Resolution	540 TV Lines
Signal-to-noise Ratio	Greater than 50dB (AGC off)
Sensitivity	0.3Lux, F1.2 Lens
Lens	3.8mm-9.5mm Vari-Focal (F1.2)

*Design and specifications are subject to change without notice

Lekson Video

3214 North University Ave. #528, Provo, UT 84604

Tel: 1-888-LEKSON1 | Fax: (801) 227-7819

WWW.LEKSONVIDEO.COM

Special Features include:

Ultra Bright LCD Screen

Built-in WDR Camera with 1/3" Sony Input Sensor High Resolution Color CCD (Varifocal Camera Optional)

Built-in USB 2.0 and Compact Flash Card multimedia player plays avi and wmv files

RJ-45 Ethernet Port allows complete control of the monitor through a secured internet connection from a web browser

Remotely upload files to the USB or C/F Card, create and schedule playlists, and change monitor settings using web browser

Multi-PVM Manager allows files to be uploaded to multiple PVMs at the same time

Easy camera directional adjustment

Built-in surveillance camera continues to monitor no matter what mode the monitor is in

PVM Viewer Software (included) allows the encoded internal camera to be displayed on a PC

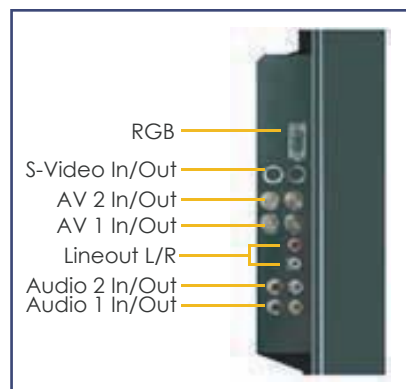
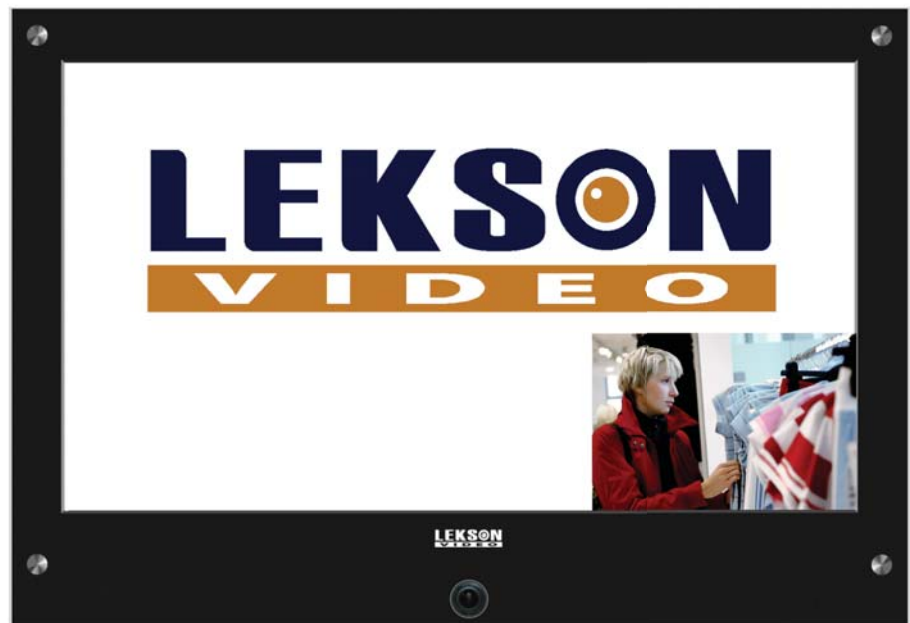
3D Comb Filter, Deinterlace, PIP Function

Stylish surveillance design

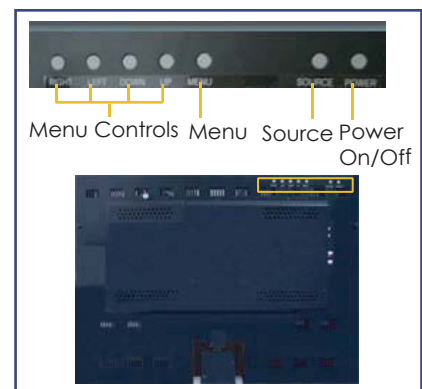
Light sensor conserves energy by putting monitor into sleep mode when the lights go out

Internal 2W speakers

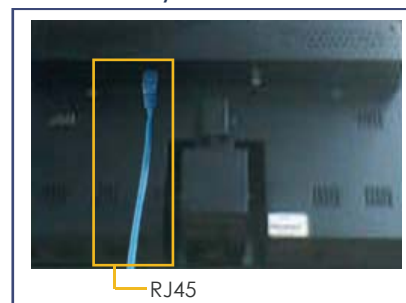
23" IP-Enabled Intelligent Public View Monitor



Side View (Connectors)



Rear View (Controls)



Ethernet Connection

**General**

Display Type	LCD TFT (Thin-Film Transistor)
Size	23 inches
Signal system	525lines NTSC; 625lines PAL
Aspect Ratio	16 : 9

Panel

Pixel Pitch	0.327mm
Viewing Angle (Wide) (CR 5)	Horizontal: +/-89 (Left/Right), Vertical: +/-89 (Up/Down)
Display Colors	16.777million colors(8bit)
Contrast	1200:1(Typical)
Brightness	450cd/m ²
Color Temperature	10000°K
Response Time	8ms(typical)
Scanning Frequency	Horizontal: 31 ~ 82KHz, Vertical: 56 ~ 75Hz
Lamp Life Time	50,000Hrs(Min)
Display Resolution	1366 x 768 (WXGA)
Surface Treatment	Hard coating(3H), Anti-glare

Connections

VGA Input	RGB Analog 0.7Vp-p, 15-pin D-sub Connector
Audio In/Out	Mono Jack(2)
Speaker	Internal Type 8Ω 2W (2) (Option)
Video In/Out	2 Composite Video BNC Looping, 1 S-Video Looping, 1 VGA
CF Card	CF Card Connector
USB 2.0	4 pin USB Connector

Functions

Auto Sync Format Detection	NTSC/PAL/SECAM
OSD Language	6 Languages (English, Francis, Italian, Germany, Spanish, Portuguese)
Other Functions	3D Comb Filter, De-interlace
User Controls	Auto Adjust, Brightness, Contrast, Color, Over Scan, Volume, Language, Auto Power, Power latching, Key Lock, Motion Detection
Multimedia Supported Types	Audio: MP3 Video: JPEG, M-JPEG, MPEG-1, MPEG-2, MPEG-4, AVI

Electrical

Input Voltage	24VDC, 5.42A
Input Signal	0.5 to 2.0Vp-p
Input/Output Impedances	75Ω
Power Consumption	120 Watts (Includes Speaker)
Power Management	VESA DPMS Compatible

Environment

Operating temperature	32°F-104°F (0°C~40°C)
-----------------------	-----------------------

WDR Camera

Input Sensor	Sony 1/3" WDR High Resolution Color CCD
Resolution	470 TV Lines
Signal to Noise Ratio	Greater than 48dB (AGC Off)
Sensitivity	0.5Lux at F1.2 Lens
Lens	3.8mm - 9.5mm Vari-Focal (F1.2)

Varifocal Camera Optional - PLM230NV

Input Sensor	1/3in. Interline Transfer type color CCD (SONY) Day & Night
Resolution	540 TV Lines
Signal-to-noise Ratio	Greater than 50dB (AGC off)
Sensitivity	0.3Lux, F1.2 Lens
Lens	3.8mm-9.5mm Vari-Focal (F1.2)

*Design and specifications are subject to change without notice

Lekson Video

3214 North University Ave. #528, Provo, UT 84604

Tel: 1-888-LEKSON1 | Fax: (801) 227-7819

WWW.LEKSONVIDEO.COM

Special Features include:

Ultra Bright LCD Screen

Built-in WDR Camera with 1/3" Sony Input Sensor High Resolution Color CCD (Varifocal Camera Optional)

Built-in USB 2.0 and Compact Flash Card multimedia player plays avi and wmv files

RJ-45 Ethernet Port allows complete control of the monitor through a secured internet connection from a web browser

Remotely upload files to the USB or C/F Card, create and schedule playlists, and change monitor settings using web browser

Multi-PVM Manager allows files to be uploaded to multiple PVMs at the same time

Easy camera directional adjustment

Built-in surveillance camera continues to monitor no matter what mode the monitor is in

PVM Viewer Software (included) allows the encoded internal camera to be displayed on a PC

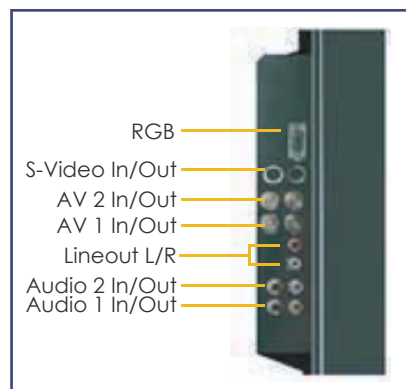
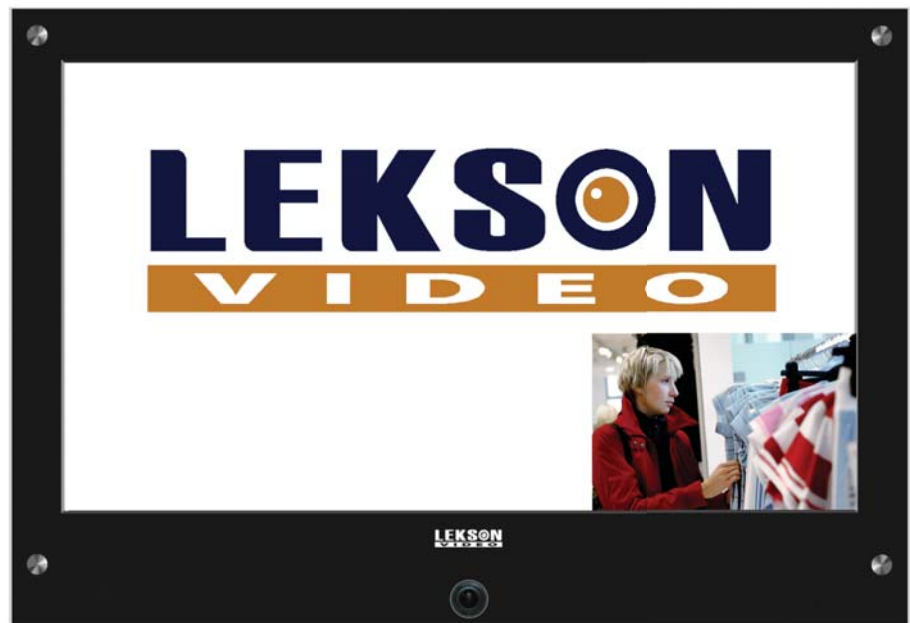
3D Comb Filter, Deinterlace, PIP Function

Stylish surveillance design

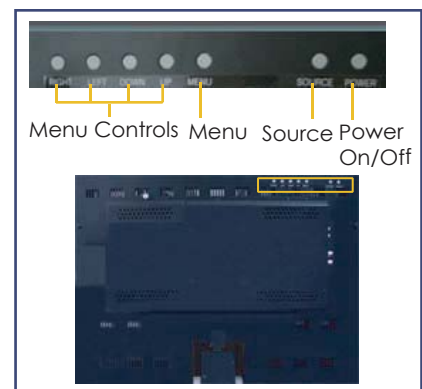
Light sensor conserves energy by putting monitor into sleep mode when the lights go out

Internal 2W speakers

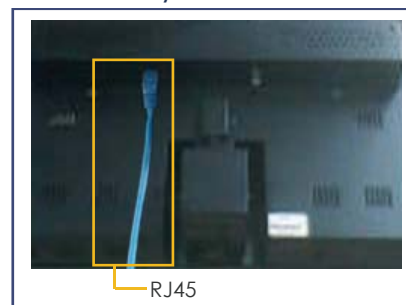
26" IP-Enabled Intelligent Public View Monitor



Side View (Connectors)



Rear View (Controls)



Ethernet Connection

**General**

Display Type	LCD TFT (Thin-Film Transistor)
Size	26 inches
Signal system	525lines NTSC; 625lines PAL
Aspect Ratio	16 : 9

Panel

Pixel Pitch	0.4215mm
Viewing Angle (Wide) (CR 5)	Horizontal: +/-88 (Left/Right), Vertical: +/-88 (Up/Down)
Display Colors	16.777million colors(8bit)
Contrast	800:1(Typical)
Brightness	500cd/m ²
Color Temperature	10000°K
Response Time	20ms(typical)
Scanning Frequency	Horizontal: 39.45 ~ 41.10KHz, Vertical: 48 ~ 52Hz
Lamp Life Time	60,000Hrs(Min)
Display Resolution	1366 x 768 (WXGA)
Surface Treatment	Hard coating(3H), Anti-glare

Connections

VGA Input	RGB Analog 0.7Vp-p, 15-pin D-sub Connector
Audio In/Out	Mono Jack(2)
Speaker	Internal Type 8Ω 2W (2) (Option)
Video In/Out	2 Composite Video BNC Looping, 1 S-Video Looping, 1 VGA
CF Card	CF Card Connector
USB 2.0	4 pin USB Connector

Functions

Auto Sync Format Detection	NTSC/PAL/SECAM
OSD Language	6 Languages (English, Francis, Italian, Germany, Spanish, Portuguese)
Other Functions	3D Comb Filter, De-interlace
User Controls	Auto Adjust, Brightness, Contrast, Color, Over Scan, Volume, Language, Auto Power, Power latching, Key Lock, Motion Detection
Multimedia Supported Types	Audio: MP3 Video: JPEG, M-JPEG, MPEG-1, MPEG-2, MPEG-4, AVI

Electrical

Input Voltage	24VDC, 5.42A
Input Signal	0.5 to 2.0Vp-p
Input/Output Impedances	75Ω
Power Consumption	120 Watts (Includes Speaker)
Power Management	VESA DPMS Compatible

Environment

Operating temperature	32°F-104°F (0°C~40°C)
-----------------------	-----------------------

WDR Camera

Input Sensor	Sony 1/3" WDR High Resolution Color CCD
Resolution	470 TV Lines
Signal to Noise Ratio	Greater than 48dB (AGC Off)
Sensitivity	0.5Lux at F1.2 Lens
Lens	3.8mm - 9.5mm Vari-Focal (F1.2)

Varifocal Camera Optional - PLM260NV

Input Sensor	1/3in. Interline Transfer type color CCD (SONY) Day & Night
Resolution	540 TV Lines
Signal-to-noise Ratio	Greater than 50dB (AGC off)
Sensitivity	0.3Lux, F1.2 Lens
Lens	3.8mm-9.5mm Vari-Focal (F1.2)

*Design and specifications are subject to change without notice

Lekson Video

3214 North University Ave. #528, Provo, UT 84604

Tel: 1-888-LEKSON1 | Fax: (801) 227-7819

WWW.LEKSONVIDEO.COM

Special Features include:

Ultra Bright LCD Screen

Built-in WDR Camera with 1/3" Sony Input Sensor High Resolution Color CCD (Varifocal Camera Optional)

Built-in USB 2.0 and Compact Flash Card multimedia player plays avi and wmv files

RJ-45 Ethernet Port allows complete control of the monitor through a secured internet connection from a web browser

Remotely upload files to the USB or C/F Card, create and schedule playlists, and change monitor settings using web browser

Multi-PVM Manager allows files to be uploaded to multiple PVMs at the same time

Easy camera directional adjustment

Built-in surveillance camera continues to monitor no matter what mode the monitor is in

PVM Viewer Software (included) allows the encoded internal camera to be displayed on a PC

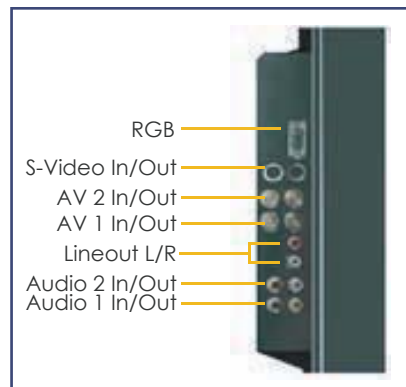
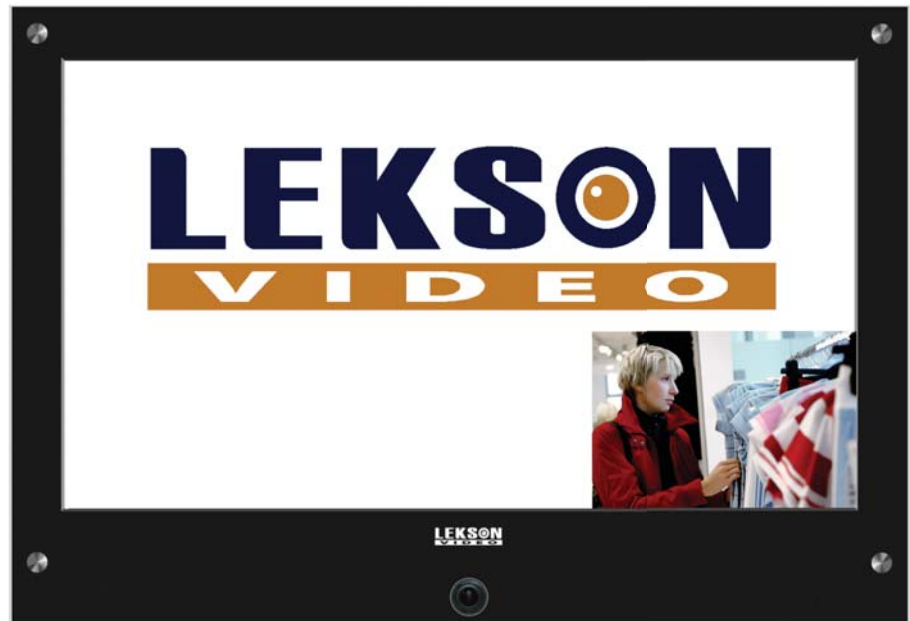
3D Comb Filter, Deinterlace, PIP Function

Stylish surveillance design

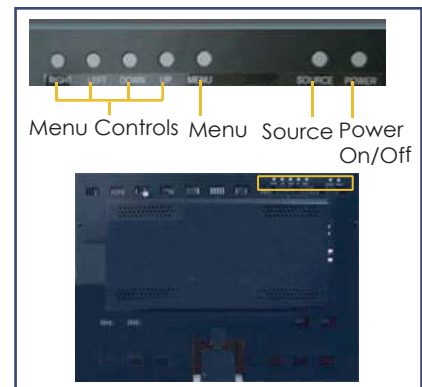
Light sensor conserves energy by putting monitor into sleep mode when the lights go out

Internal 2W speakers

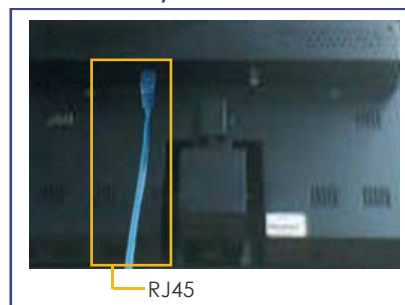
32" IP-Enabled Intelligent Public View Monitor



Side View (Connectors)



Rear View (Controls)



Ethernet Connection

**General**

Display Type	LCD TFT (Thin-Film Transistor)
Size	32 inches
Signal system	525lines NTSC; 625lines PAL
Aspect Ratio	16 : 9

Panel

Pixel Pitch	0.170mm x 0.510mm x RGB
Viewing Angle (Wide) (CR 5)	Horizontal: +/-89 (Left/Right), Vertical: +/-89 (Up/Down)
Display Colors	16.777million colors(8bit)
Contrast	1600:1(Typical)
Brightness	500cd/m ²
Color Temperature	10000°K
Response Time	18ms(typical)
Scanning Frequency	Horizontal: 45-50 Khz, Vertical: 47-63 Hz
Lamp Life Time	60,000Hrs(Min)
Display Resolution	1366 x 768 (WXGA)
Surface Treatment	Hard coating(3H), Anti-glare

Connections

VGA Input	RGB Analog 0.7Vp-p, 15-pin D-sub Connector
Audio In/Out	Mono Jack(2)
Speaker	Internal Type 8Ω 2W (2) (Option)
Video In/Out	2 Composite Video BNC Looping, 1 S-Video Looping, 1 VGA
CF Card	CF Card Connector
USB 2.0	4 pin USB Connector

Functions

Auto Sync Format Detection	NTSC/PAL/SECAM
OSD Language	6 Languages (English, Francis, Italian, Germany, Spanish, Portuguese)
Other Functions	3D Comb Filter, De-interlace
User Controls	Auto Adjust, Brightness, Contrast, Color, Over Scan, Volume, Language, Auto Power, Power latching, Key Lock, Motion Detection
Multimedia Supported Types	Audio: MP3 Video: JPEG, M-JPEG, MPEG-1, MPEG-2, MPEG-4, AVI

Electrical

Input Voltage	SMPS (AC 100 ~240V, 50/60Hz MAX 2.5A)
Input Signal	0.5 to 2.0Vp-p
Input/Output Impedances	75Ω
Power Consumption	150 Watts (Includes Speaker)
Power Management	VESA DPMS Compatible

Environment

Operating temperature	32°F-104°F (0°C~40°C)
-----------------------	-----------------------

WDR Camera

Input Sensor	Sony 1/3" WDR High Resolution Color CCD
Resolution	470 TV Lines
Signal to Noise Ratio	Greater than 48dB (AGC Off)
Sensitivity	0.5Lux at F1.2 Lens
Lens	3.8mm - 9.5mm Vari-Focal (F1.2)

Varifocal Camera Optional - PLM320NV

Input Sensor	1/3in. Interline Transfer type color CCD (SONY) Day & Night
Resolution	540 TV Lines
Signal-to-noise Ratio	Greater than 50dB (AGC off)
Sensitivity	0.3Lux, F1.2 Lens
Lens	3.8mm-9.5mm Vari-Focal (F1.2)

*Design and specifications are subject to change without notice

Lekson Video

3214 North University Ave. #528, Provo, UT 84604

Tel: 1-888-LEKSON1 | Fax: (801) 227-7819

WWW.LEKSONVIDEO.COM

Special Features include:

Ultra Bright LCD Screen

Built-in WDR Camera with 1/3" Sony Input Sensor High Resolution Color CCD (Varifocal Camera Optional)

Built-in USB 2.0 and Compact Flash Card multimedia player plays avi and wmv files

RJ-45 Ethernet Port allows complete control of the monitor through a secured internet connection from a web browser

Remotely upload files to the USB or C/F Card, create and schedule playlists, and change monitor settings using web browser

Multi-PVM Manager allows files to be uploaded to multiple PVMs at the same time

Easy camera directional adjustment

Built-in surveillance camera continues to monitor no matter what mode the monitor is in

PVM Viewer Software (included) allows the encoded internal camera to be displayed on a PC

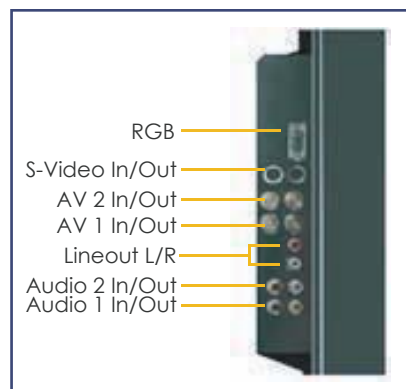
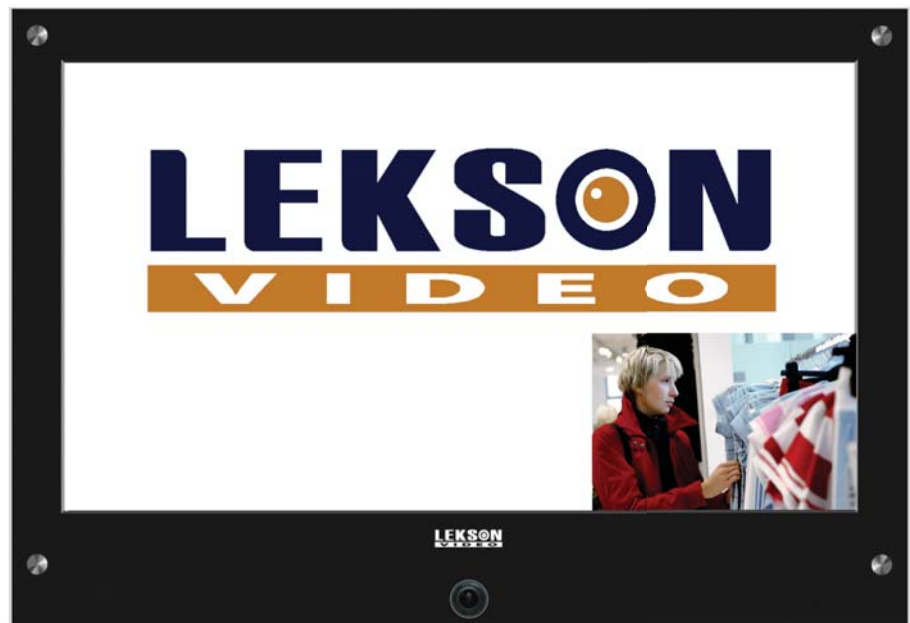
3D Comb Filter, Deinterlace, PIP Function

Stylish surveillance design

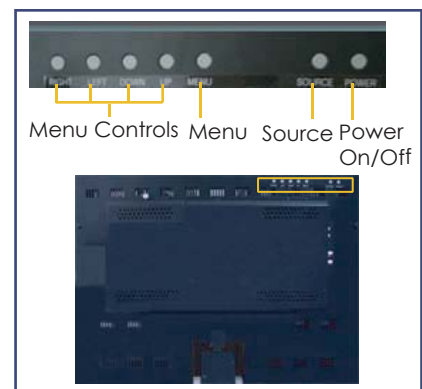
Light sensor conserves energy by putting monitor into sleep mode when the lights go out

Internal 2W speakers

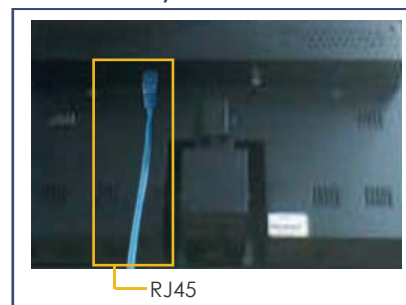
37" IP-Enabled Intelligent Public View Monitor



Side View (Connectors)



Rear View (Controls)



Ethernet Connection

**General**

Display Type	LCD TFT (Thin-Film Transistor)
Size	37 inches
Signal system	525lines NTSC; 625lines PAL
Aspect Ratio	16 : 9

Panel

Pixel Pitch	0.200mm x 0.600mm x RGB
Viewing Angle (Wide) (CR 5)	Horizontal: +/-89 (Left/Right), Vertical: +/-89 (Up/Down)
Display Colors	16.777million colors(8bit)
Contrast	1600:1(Typical)
Brightness	500cd/m ²
Color Temperature	10000°K
Response Time	18ms(typical)
Scanning Frequency	Horizontal: 45-50 Khz, Vertical: 47-63 Hz
Lamp Life Time	60,000Hrs(Min)
Display Resolution	1366 x 768 (WXGA)
Surface Treatment	Hard coating(3H), Anti-glare

Connections

VGA Input	RGB Analog 0.7Vp-p, 15-pin D-sub Connector
Audio In/Out	Mono Jack(2)
Speaker	Internal Type 8Ω 2W (2) (Option)
Video In/Out	2 Composite Video BNC Looping, 1 S-Video Looping, 1 VGA
CF Card	CF Card Connector
USB 2.0	4 pin USB Connector

Functions

Auto Sync Format Detection	NTSC/PAL/SECAM
OSD Language	6 Languages (English, Francis, Italian, Germany, Spanish, Portuguese)
Other Functions	3D Comb Filter, De-interlace
User Controls	Auto Adjust, Brightness, Contrast, Color, Over Scan, Volume, Language, Auto Power, Power latching, Key Lock, Motion Detection
Multimedia Supported Types	Audio: MP3 Video: JPEG, M-JPEG, MPEG-1, MPEG-2, MPEG-4, AVI

Electrical

Input Voltage	SMPS (AC 100 ~240V, 50/60Hz MAX 2.5A)
Input Signal	0.5 to 2.0Vp-p
Input/Output Impedances	75Ω
Power Consumption	150 Watts (Includes Speaker)
Power Management	VESA DPMS Compatible

Environment

Operating temperature	32°F-104°F (0°C~40°C)
-----------------------	-----------------------

WDR Camera

Input Sensor	Sony 1/3" WDR High Resolution Color CCD
Resolution	470 TV Lines
Signal to Noise Ratio	Greater than 48dB (AGC Off)
Sensitivity	0.5Lux at F1.2 Lens
Lens	3.8mm - 9.5mm Vari-Focal (F1.2)

Varifocal Camera Optional - PLM370NV

Input Sensor	1/3in. Interline Transfer type color CCD (SONY) Day & Night
Resolution	540 TV Lines
Signal-to-noise Ratio	Greater than 50dB (AGC off)
Sensitivity	0.3Lux, F1.2 Lens
Lens	3.8mm-9.5mm Vari-Focal (F1.2)

*Design and specifications are subject to change without notice

Lekson Video

3214 North University Ave. #528, Provo, UT 84604

Tel: 1-888-LEKSON1 | Fax: (801) 227-7819

WWW.LEKSONVIDEO.COM

Special Features include:

Ultra Bright LCD Screen

Built-in WDR Camera with 1/3" Sony Input Sensor High Resolution Color CCD (Varifocal Camera Optional)

Built-in USB 2.0 and Compact Flash Card multimedia player plays avi and wmv files

RJ-45 Ethernet Port allows complete control of the monitor through a secured internet connection from a web browser

Remotely upload files to the USB or C/F Card, create and schedule playlists, and change monitor settings using web browser

Multi-PVM Manager allows files to be uploaded to multiple PVMs at the same time

Easy camera directional adjustment

Built-in surveillance camera continues to monitor no matter what mode the monitor is in

PVM Viewer Software (included) allows the encoded internal camera to be displayed on a PC

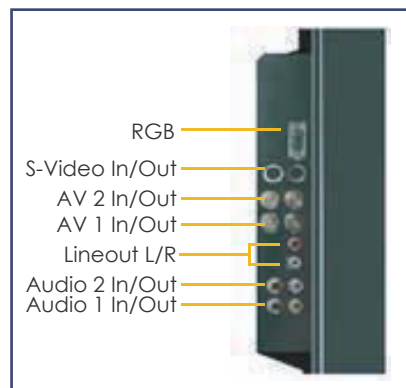
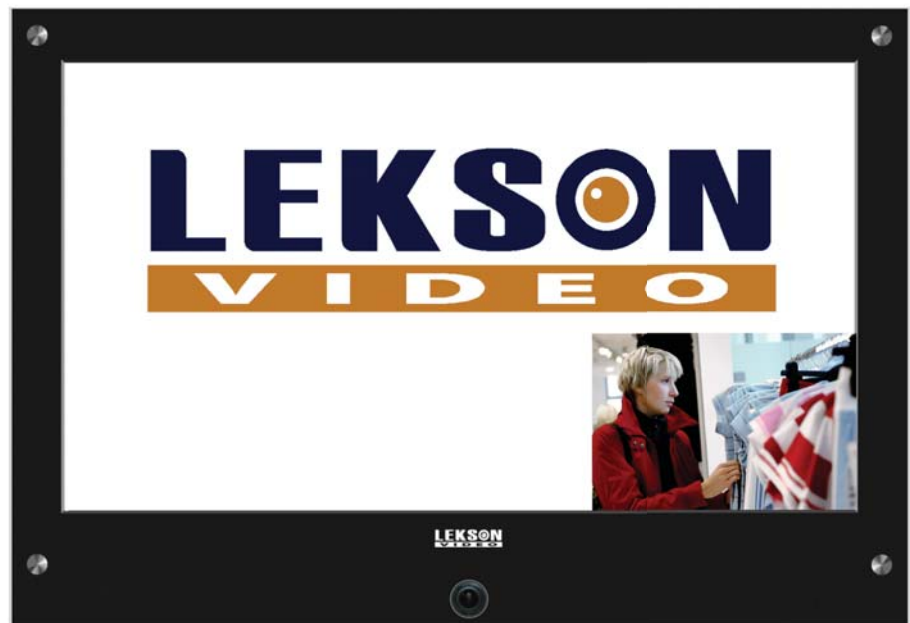
3D Comb Filter, Deinterlace, PIP Function

Stylish surveillance design

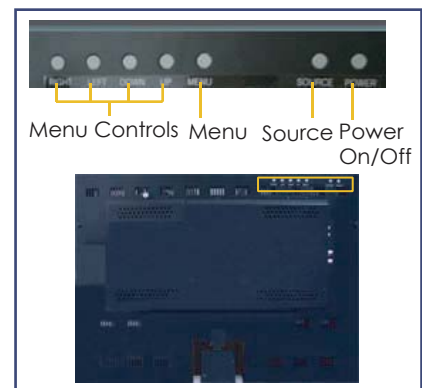
Light sensor conserves energy by putting monitor into sleep mode when the lights go out

Internal 2W speakers

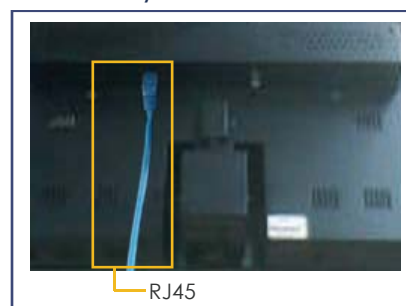
42" IP-Enabled Intelligent Public View Monitor



Side View (Connectors)



Rear View (Controls)



Ethernet Connection

**General**

Display Type	LCD TFT (Thin-Film Transistor)
Size	42 inches
Signal system	525lines NTSC; 625lines PAL
Aspect Ratio	16 : 9

Panel

Pixel Pitch	0.227mm x 0.681mm x RGB
Viewing Angle (Wide) (CR 5)	Horizontal: +/-89 (Left/Right), Vertical: +/-89 (Up/Down)
Display Colors	16.777million colors(8bit)
Contrast	800:1(Typical)
Brightness	500cd/m ²
Color Temperature	10000°K
Response Time	18ms(typical)
Scanning Frequency	Horizontal: 45-50 Khz, Vertical: 47-63 Hz
Lamp Life Time	60,000Hrs(Min)
Display Resolution	1366 x 768 (WXGA)
Surface Treatment	Hard coating(3H), Anti-glare

Connections

VGA Input	RGB Analog 0.7Vp-p, 15-pin D-sub Connector
Audio In/Out	Mono Jack(2)
Speaker	Internal Type 8Ω 2W (2) (Option)
Video In/Out	2 Composite Video BNC Looping, 1 S-Video Looping, 1 VGA
CF Card	CF Card Connector
USB 2.0	4 pin USB Connector

Functions

Auto Sync Format Detection	NTSC/PAL/SECAM
OSD Language	6 Languages (English, Francis, Italian, Germany, Spanish, Portuguese)
Other Functions	3D Comb Filter, De-interlace
User Controls	Auto Adjust, Brightness, Contrast, Color, Over Scan, Volume, Language, Auto Power, Power latching, Key Lock, Motion Detection
Multimedia Supported Types	Audio: MP3 Video: JPEG, M-JPEG, MPEG-1, MPEG-2, MPEG-4, AVI

Electrical

Input Voltage	SMPS (AC 100 ~240V, 50/60Hz MAX 2.5A)
Input Signal	0.5 to 2.0Vp-p
Input/Output Impedances	75Ω
Power Consumption	200Watts, Standby 5Watts (idle: 5W)VESA DPMS Compatible
Power Management	VESA DPMS Compatible

Environment

Operating temperature	32°F-104°F (0°C~40°C)
-----------------------	-----------------------

WDR Camera

Input Sensor	Sony 1/3" WDR High Resolution Color CCD
Resolution	470 TV Lines
Signal to Noise Ratio	Greater than 48dB (AGC Off)
Sensitivity	0.5Lux at F1.2 Lens
Lens	3.8mm - 9.5mm Vari-Focal (F1.2)

Varifocal Camera Optional - PLM420NV

Input Sensor	1/3in. Interline Transfer type color CCD (SONY) Day & Night
Resolution	540 TV Lines
Signal-to-noise Ratio	Greater than 50dB (AGC off)
Sensitivity	0.3Lux,F1.2 Lens
Lens	3.8mm-9.5mm Vari-Focal (F1.2)

*Design and specifications are subject to change without notice

Lekson Video

3214 North University Ave. #528, Provo, UT 84604

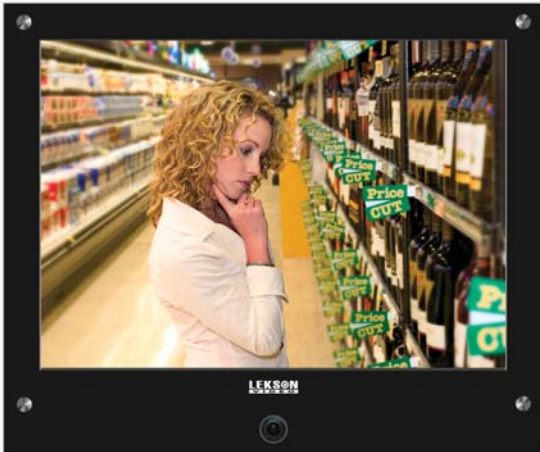
Tel: 1-888-LEKSON1 | Fax: (801) 227-7819

WWW.LEKSONVIDEO.COM

Public View Monitors



Lekson Video's Public View Monitors combine a high resolution LCD monitor and a powerful surveillance camera into one unit. These are the perfect units for any security applications where you want to show that surveillance is in use. This will cut down on theft and false liability claims in the retail environment. Help encourage appropriate behavior in school hallways and show your employees that their security is important to you. The ST series also offers a number of different video inputs that make the monitor much more versatile. You can choose to have the camera always running sending a signal back to a digital video recorder no matter what video mode the monitor is in. The CH and ST series of Public View Monitors from Lekson Video are a great addition to your CCTV system.



PVM Quick Reference Guide	page 80
PLM150CH 15" PVM	81
PLM170CH 17" PVM	83
PLM190CH 19" PVM	85
PLM201ST 20" PVM	87
PLM230ST 23" PVM	89
PLM260ST 26" PVM	91
PLM320ST 32" PVM	93
PLM370ST 37" PVM	95
PLM420ST 42" PVM	97

LEKSON
VIDEO

Public View Monitors Quick Reference Guide

	Panel Size	Inputs/Outputs	IP Enabled	Multimedia	PIP	Resolution	Contrast Ratio	Brightness	Aspect Ratio	Viewing Angle	Response Time	Comb Filter
PLM201	20.1"	2 BNC Looping, 1 VGA, 1 S-Video, 2 Audio Looping	No	Yes	Yes	800 x 600	600:1	450 cd/m ²	4:3	H: 160 V:120	16 ms	YES
PLM230	23"	2 BNC Looping, 1 VGA, 1 S-Video, 2 Audio Looping	No	Yes	Yes	1366 x 768	1200:1	450 cd/m ²	16:9	H: 178 V:178	25 ms	YES
PLM260	26"	2 BNC Looping, 1 VGA, 1 S-Video, 2 Audio Looping	No	Yes	Yes	1366x 768	800:1	500 cd/m ²	16:9	H: 176 V:176	20 ms	YES
PLM320	32"	2 BNC Looping, 1 VGA, 1 S-Video, 2 Audio Looping	No	Yes	Yes	1366 x 768	1600:1	500 cd/m ²	16:9	H: 178 V:178	18 ms	YES
PLM360	36"	2 BNC Looping, 1 VGA, 1 S-Video, 2 Audio Looping	No	Yes	Yes	1366 x 768	1600:1	500 cd/m ²	16:9	H: 178 V:178	18 ms	YES
PLM420	42"	2 BNC Looping, 1 VGA, 1 S-Video, 2 Audio Looping	No	Yes	Yes	1366x 768	800:1	500 cd/m ²	16:9	H: 178 V:178	18 ms	YES
PLM201N	20.1"	2 BNC Looping, 1 VGA, 1 S-Video, 2 Audio Looping	Yes	Yes	Yes	800 x 600	600:1	450 cd/m ²	4:3	H: 160 V:120	16 ms	YES
PLM230N	23"	2 BNC Looping, 1 VGA, 1 S-Video, 2 Audio Looping	Yes	Yes	Yes	1366 x 768	1200:1	450 cd/m ²	16:9	H: 178 V:178	25 ms	YES
PLM260N	26"	2 BNC Looping, 1 VGA, 1 S-Video, 2 Audio Looping	Yes	Yes	Yes	1366x 768	800:1	500 cd/m ²	16:9	H: 176 V:176	20 ms	YES
PLM320N	32"	2 BNC Looping, 1 VGA, 1 S-Video, 2 Audio Looping	Yes	Yes	Yes	1366 x 768	1600:1	500 cd/m ²	16:9	H: 178 V:178	18 ms	YES
PLM360N	36"	2 BNC Looping, 1 VGA, 1 S-Video, 2 Audio Looping	Yes	Yes	Yes	1366 x 768	1600:1	500 cd/m ²	16:9	H: 178 V:178	18 ms	YES
PLM420N	42"	2 BNC Looping, 1 VGA, 1 S-Video, 2 Audio Looping	Yes	Yes	Yes	1366x 768	800:1	500 cd/m ²	16:9	H: 178 V:178	18 ms	YES
PLM150CH	15"	1 BNC Looping, 1 VGA, 1 S-Video, 1 Audio	No	No	No	1024 x 768	450:1	250 cd/m ²	4:3	H: 130 V:110	13 ms	YES
PLM170CH	17"	1 BNC Looping, 1 VGA, 1 S-Video, 1 Audio	No	No	No	1280 x 1024	700:1	300 cd/m ²	5:4	H: 150 V:135	10 ms	YES
PLM190CH	19"	1 BNC Looping, 1 VGA, 1 S-Video, 2 Audio	No	No	No	1280 x 1024	700:1	300 cd/m ²	5:4	H: 150 V:135	9 ms	YES
PLM201ST	20.1"	2 BNC Looping, 1 VGA, 1 S-Video, 2 Audio Looping	No	No	No	800 x 600	600:1	450 cd/m ²	4:3	H: 160 V:120	16 ms	YES
PLM230ST	23"	2 BNC Looping, 1 VGA, 1 S-Video, 2 Audio Looping	No	No	No	1366 x 768	1200:1	450 cd/m ²	16:9	H: 178 V:178	25 ms	YES
PLM260ST	26"	2 BNC Looping, 1 VGA, 1 S-Video, 2 Audio Looping	No	No	No	1366x 768	800:1	500 cd/m ²	16:9	H: 176 V:176	20 ms	YES
PLM320ST	32"	2 BNC Looping, 1 VGA, 1 S-Video, 2 Audio Looping	No	No	No	1366 x 768	1600:1	500 cd/m ²	16:9	H: 178 V:178	18 ms	YES
PLM360ST	36"	2 BNC Looping, 1 VGA, 1 S-Video, 2 Audio Looping	No	No	No	1366 x 768	1600:1	500 cd/m ²	16:9	H: 178 V:178	18 ms	YES
PLM420ST	42"	2 BNC Looping, 1 VGA, 1 S-Video, 2 Audio Looping	No	No	No	1366x 768	800:1	500 cd/m ²	16:9	H: 178 V:178	18 ms	YES



Call 1-888-LEKSON1 to order www.leksonvideo.com

Special Features include:

High Resolution: 1024 x 768

Built-in WDR Camera with
Sony 1/3" Image Sensor High
Resolution Color CCD

Camera has 470 TV Lines of
Resolution

VGA Input

BNC Looping Output

Brightness of 250 cd/m²

Contrast of 450:1

Advanced Image Scaling

4H Comb Filter

Audio Input

VESA Wall-Mount Compatible
(100mm x 100mm)

15" Public View Monitor





SPECIFICATIONS

PLM150CH

System

Panel Size	15" LCD TFT
Resolution	1024 x 768
Contrast Ratio	450 : 1
Brightness	250 cd/m ²
Aspect Ratio	4:3
View Angle	H : 130, V : 120
Response Time	13 ms (Typical)
Video Signal	Composite signal 0.5~2 Vp-p/75
Video Mode	NTSC/PAL Auto Scanning
Scan Frequency	H:47.6K~60KHz, V:59~75Hz
Regulatory Approvals	CE, FCC
IR Sensor	Frequency 38 KHZ

Operation

Front Panner Controls	Menu, Up, Down, Volume, Power
Indicators	Power On LED
OSD Control	Color Temp, Utility, OSD, Language (5)
OSD Language	English, Francais, Deutsch, Espanol, Italiano

Connector

Inputs	D-Sub x 1(0.7 Vp-p) Video Input (BNC) x 1 Video Input (S-Video) x 1 Audio Input (RCA) x 1
Outputs	Video Looping Out (BNC) x 1 Audio Output (RCA) x 1

Mechanical & Electric Design

Glass Frame	Optional
Audio Speaker	1W x 2
Looping 75	Yes
VESA Spec.	100mm x 100mm
Frame Material	Plastic
Back Material	Plastic
Base Material	Plastic
Power	DC 12V, 3.33A
Power Consumption	33 Watts, Standby 5 Watts
Color	Black

WDR Camera

Input Sensor	Sony 1/3" WDR High Resolution Color CCD
Resolution	470 TVL
Signal to Noise Ratio	Greater than 48 dB (AGC Off)
Sensitivity	0.5 Lux at F1.2 Lens
Lens	3.8 mm - 9.5 mm Vari-Focal (F1.2)

Accessories

Power Cord (Qty 1), Adapter (Qty 1), VGA Cable (Qty 1), Remote Control (Qty 1), AAA Batteries (Qty 2)

*Design and specifications are subject to change without notice

Lekson Video

3214 North University Ave. #528, Provo, UT 84604

Tel: 1-888-LEKSON1 | Fax: (801) 227-7819

www.leksonvideo.com

Special Features include:

High Resolution: 1280 x 1024

Built-in WDR Camera with
Sony 1/3" Image Sensor High
Resolution Color CCD

Camera has 470 TV Lines of
Resolution

VGA Input

BNC Looping Output

Brightness of 250 cd/m²

Contrast of 700:1

Advanced Image Scaling

4H Comb Filter

Audio Input

VESA Wall-Mount Compatible
(100mm x 100mm)

17" Public View Monitor





SPECIFICATIONS

PLM170CH

System

Panel Size	17" LCD TFT
Resolution	1280 x 1024(SXGA)
Contrast Ratio	700 : 1
Brightness	250 cd/m ²
Aspect Ratio	5:4
View Angle	H : 130, V : 120
Response Time	6 ms (Typical)
Video Signal	Composite signal 0.5~2 Vp-p/75
Video Mode	NTSC/PAL Auto Scanning
Scan Frequenc	H:56.7K~82.08KHz, V:55~77Hz
Regulatory Approvals	CE, FCC
IR Sensor	Frequency 38 KHZ

Operation

Front Panner Controls	Menu, Up, Down, Volume, Power
Indicators	Power On LED
OSD Control	Color Temp, Utility, OSD, Language (5)
OSD Language	English, Francais, Deutsch, Espanol, Italiano

Connector

Inputs	D-Sub x 1(0.7 Vp-p) Video Input (BNC) x 1 Video Input (S-Video) x 1 Audio Input (RCA) x 1
Outputs	Video Looping Out (BNC) x 1 Audio Output (RCA) x 1

Mechanical & Electric Design

Glass Frame	Optional
Audio Speaker	1W x 2
Looping 75	Yes
VESA Spec.	100mm x 100mm
Frame Material	Plastic
Back Material	Plastic
Base Material	Plastic
Power	DC 12V, 3.33A
Power Consumption	33 Watts, Standby 5 Watts
Color	Black

WDR Camera

Input Sensor	Sony 1/3" WDR High Resolution Color CCD
Resolution	470 TVL
Signal to Noise Ratio	Greater than 48 dB (AGC Off)
Sensitivity	0.5 Lux at F1.2 Lens
Lens	3.8 mm - 9.5 mm Vari-Focal (F1.2)

Accessories

Power Cord (Qty 1), Adapter (Qty 1), VGA Cable (Qty 1), Remote Control (Qty 1), AAA Batteries (Qty 2)

*Design and specifications are subject to change without notice

Lekson Video

3214 North University Ave. #528, Provo, UT 84604

Tel: 1-888-LEKSON1 | Fax: (801) 227-7819

www.leksonvideo.com

Special Features include:

High Resolution: 1280 x 1024

Built-in WDR Camera with
Sony 1/3" Image Sensor High
Resolution Color CCD

Camera has 470 TV Lines of
Resolution

VGA Input

BNC Looping Output

Brightness of 300 cd/m²

Contrast of 700:1

Advanced Image Scaling

4H Comb Filter

Audio Input

VESA Wall-Mount Compatible
(100mm x 100mm)

19" Public View Monitor





SPECIFICATIONS

PLM190CH

System

Panel Size	19" LCD TFT
Resolution	1280 x 1024(SXGA)
Contrast Ratio	700 : 1
Brightness	300 cd/m ²
Aspect Ratio	5:4
View Angle	H : 150, V : 150
Response Time	6.3 ms (Typical)
Video Signal	Composite signal 0.5~2 Vp-p/75
Video Mode	NTSC/PAL Auto Scanning
Scan Frequenc	H:53K~79.97KHz, V:50~75Hz
Regulatory Approvals	CE, FCC
IR Sensor	Frequency 38 KHZ

Operation

Front Panner Controls	Menu, Up, Down, Volume up/down
Indicators	Power On LED
OSD Control	Color Temp, Utility, OSD, Language (5)
OSD Language	English, Francais, Deutsch, Espanol, Italiano

Connector

Inputs	D-Sub x 1(0.7 Vp-p) Video Input (BNC) x 1 Video Input (S-Video) x 1 Audio Input (RCA) x 2
Outputs	Video Looping Out (BNC) x 1 Audio Output (RCA) x 1

Mechanical & Electric Design

Glass Frame	Optional
Audio Speaker	1W x 2
Looping 75	Yes
VESA Spec.	100mm x 100mm
Frame Material	Plastic
Back Material	Plastic
Base Material	Plastic
Power	DC 12V, 3.33A
Power Consumption	33 Watts, Standby 5 Watts
Color	Black

WDR Camera

Input Sensor	Sony 1/3" WDR High Resolution Color CCD
Resolution	470 TVL
Signal to Noise Ratio	Greater than 48 dB (AGC Off)
Sensitivity	0.5 Lux at F1.2 Lens
Lens	3.8 mm - 9.5 mm Vari-Focal (F1.2)

Accessories

Power Cord (Qty 1), Adapter (Qty 1), VGA Cable (Qty 1), Remote Control (Qty 1), AAA Batteries (Qty 2)

*Design and specifications are subject to change without notice

Lekson Video

3214 North University Ave. #528, Provo, UT 84604

Tel: 1-888-LEKSON1 | Fax: (801) 227-7819

www.leksonvideo.com

Special Features include:

Ultra Bright LCD Screen

Built-in WDR Camera with 1/3" Sony Input Sensor High Resolution Color CCD (Varifocal Camera Optional)

Easily adjust camera to best viewing angle

3D Comb Filter, Deinterlace, PIP Function

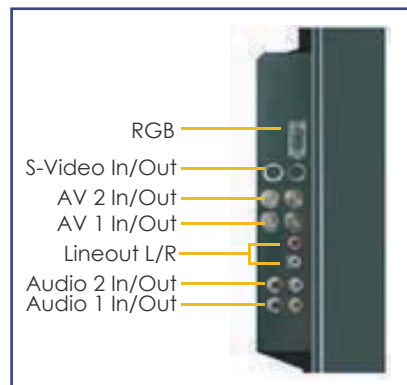
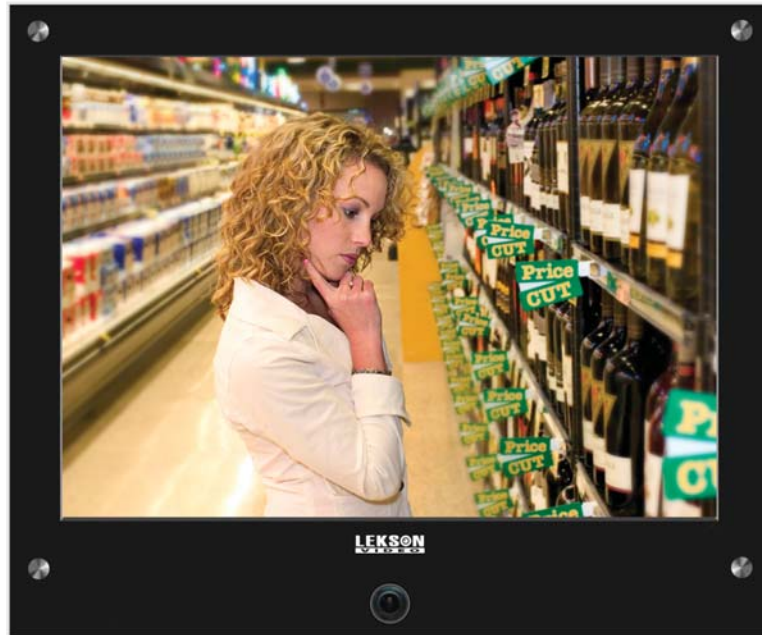
Stylish design

Light sensor conserves energy by putting monitor into sleep mode when the lights go out

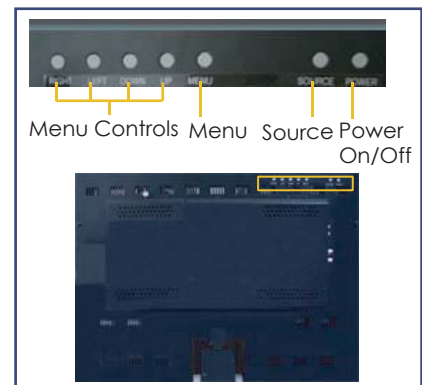
Built-in surveillance camera continues to monitor no matter what mode the monitor is in

Internal 2W speakers

20.1" Public View Monitor



Side View (Connectors)



Rear View (Controls)

**General**

Display Type	LCD TFT (Thin-Film Transistor)
Size	20 inches
Signal system	525lines NTSC; 625lines PAL
Aspect Ratio	4:3

Panel

Pixel Pitch	0.510mm
Viewing Angle (Wide) (CR 5)	Horizontal: +/-80 (Left/Right), Vertical: +/-60 (Up/Down)
Display Colors	16.2M/6 bit + FRC
Contrast	600:1 (Typical)
Brightness	450cd/m ²
Color Temperature	Selectable at 6500°K / 9300°K
Response Time	16ms (typical)
Scanning Frequency	Horizontal: 31 ~ 82KHz, Vertical: 56 ~ 75Hz
Lamp Life Time	50,000Hrs (Min)
Display Resolution	800 x 600 (SVGA)
Surface Treatment	Hard coating(3H), Anti-glare

Connections

VGA Input	RGB Analog 0.7Vp-p, 15-pin D-sub Connector
Audio In/Out	Mono Jack(2)
Speaker	Internal Type 8Ω 2W (2)
Video In/Out	Composite Video(BNC), S-Video, VGA

Functions

Auto Sync Format Detection	NTSC/PAL/SECAM
OSD Language	6 Languages (English, Francis, Italian, Germany, Spanish, Portuguese)
Other Functions	3D Comb Filter / De-interlace
User Controls	Auto Adjust, Brightness, Contrast, Color, Over Scan, Volume, Language, Auto Power, Power latching, Key Lock, Motion Detection

Environment

Operating Temperature	32 degrees to 104 degrees Fahrenheit
-----------------------	--------------------------------------

Electrical

Input Voltage	15VDC, 4.67A
Input Signal	0.5 to 2.0Vp-p
Input/Output Impedances	75Ω
Power Consumption	56 Watts (Includes Speaker)
Power Management	VESA DPMS Compatible

WDR Camera

Input Sensor	Sony 1/3" WDR High Resolution Color CCD
Resolution	470 TV Lines
Signal to Noise Ratio	Greater than 48dB (AGC Off)
Sensitivity	0.5Lux at F1.2 Lens
Lens	3.8mm - 9.5mm Vari-Focal (F1.2)

Varifocal Camera Optional - PLM201STV

Input Sensor	1/3in. Interline Transfer type color CCD (SONY) Day & Night
Resolution	540 TV Lines
Signal-to-noise Ratio	Greater than 50dB (AGC off)
Sensitivity	0.3Lux, F1.2 Lens
Lens	3.8mm-9.5mm Vari-Focal (F1.2)

*Design and specifications are subject to change without notice

Lekson Video

3214 North University Ave. #528, Provo, UT 84604

Tel: 1-888-LEKSON1 | Fax: (801) 227-7819

WWW.LEKSONVIDEO.COM

Special Features include:

Ultra Bright LCD Screen

Built-in WDR Camera with 1/3" Sony Input Sensor High Resolution Color CCD (Varifocal Camera Optional)

Easily adjust camera to best viewing angle

3D Comb Filter, Deinterlace, PIP Function

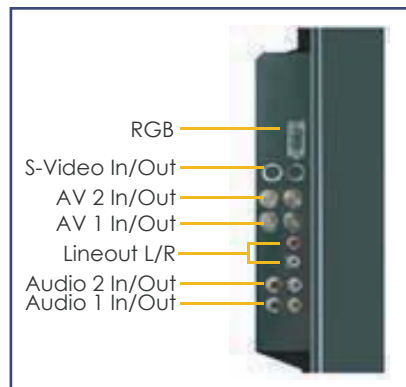
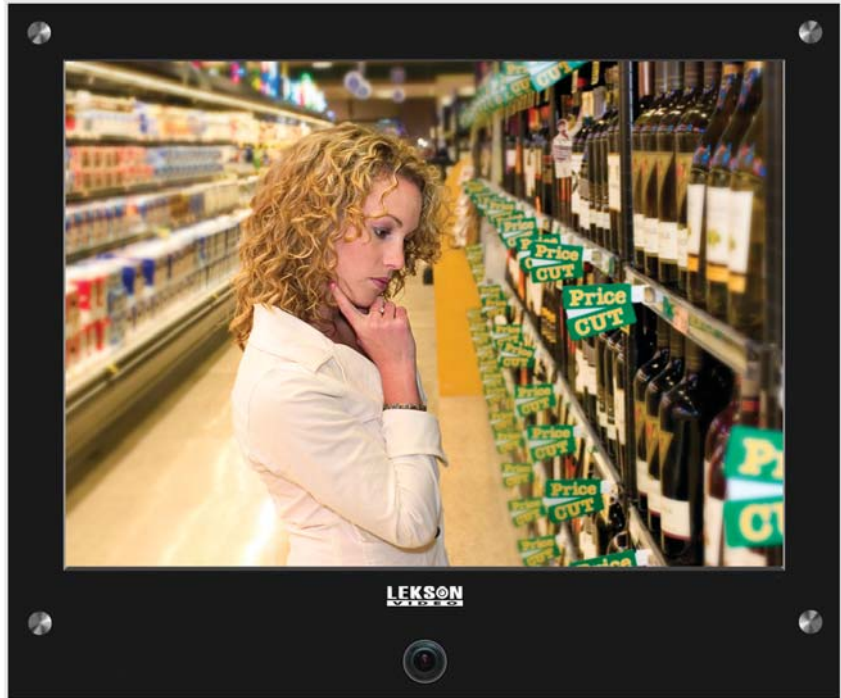
Stylish design

Light sensor conserves energy by putting monitor into sleep mode when the lights go out

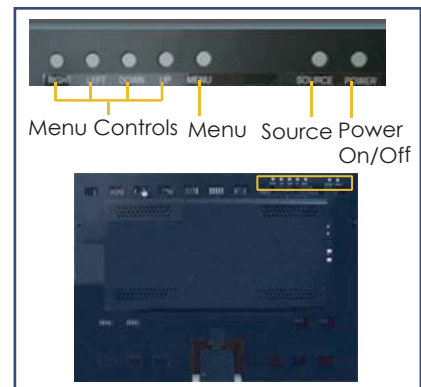
Built-in surveillance camera continues to monitor no matter what mode the monitor is in

Internal 2W speakers

23" Public View Monitor



Side View (Connectors)



Rear View (Controls)

**General**

Display Type	LCD TFT (Thin-Film Transistor)
Size	23 inches
Signal system	525lines NTSC; 625lines PAL
Aspect Ratio	16 : 9

Panel

Pixel Pitch	0.327mm
Viewing Angle (Wide) (CR 5)	Horizontal: +/-89 (Left/Right), Vertical: +/-89 (Up/Down)
Viewable Size	20.00in(508.152mm) H x 11.24in(285.696mm) V
Display Colors	16.777million colors(8bit)
Contrast	1200:1(Typical)
Brightness	450cd/m ²
Color Temperature	10000°K
Response Time	8ms(typical)
Scanning Frequency	Horizontal: 31 ~ 82KHz, Vertical: 56 ~ 75Hz
Lamp Life Time	50,000Hrs(Min)
Display Resolution	1366 x 768 (WXGA)
Surface Treatment	Hard coating(3H), Anti-glare

Connections

VGA Input	RGB Analog 0.7Vp-p, 15-pin D-sub Connector
Audio In/Out	Mono Jack(2)
Speaker	Internal Type 8Ω 2W (2) (Option)
Video Inputs	Composite Video BNC, S-Video, VGA

Functions

Auto Sync Format Detection	NTSC/PAL/SECAM
OSD Language	6 Languages (English, Francis, Italian, Germany, Spanish, Portuguese)
Other Functions	3D Comb Filter, De-interlace
User Controls	Auto Adjust, Brightness, Contrast, Color, Over Scan, Volume, Language, Auto Power, Power latching, Key Lock, Motion Detection

Electrical

Input Voltage	110-220VAC, 50/60Hz
Input Signal	0.5 to 2.0Vp-p
Input/Output Impedances	75Ω
Power Consumption	88 Watts (Includes Speaker)
Power Management	VESA DPMS Compatible

WDR Camera

Input Sensor	Sony 1/3" WDR High Resolution Color CCD
Resolution	470 TV Lines
Signal to Noise Ratio	Greater than 48dB (AGC Off)
Sensitivity	0.5Lux at F1.2 Lens
Lens	3.8mm - 9.5mm Vari-Focal (F1.2)

Varifocal Camera Optional - PLM230STV

Input Sensor	1/3in. Interline Transfer type color CCD (SONY) Day & Night
Resolution	540 TV Lines
Signal-to-noise Ratio	Greater than 50dB (AGC off)
Sensitivity	0.3Lux, F1.2 Lens
Lens	3.8mm-9.5mm Vari-Focal (F1.2)

*Design and specifications are subject to change without notice

Lekson Video

3214 North University Ave. #528, Provo, UT 84604

Tel: 1-888-LEKSON1 | Fax: (801) 227-7819

WWW.LEKSONVIDEO.COM

Special Features include:

Ultra Bright LCD Screen

Built-in WDR Camera with 1/3" Sony Input Sensor High Resolution Color CCD (Varifocal Camera Optional)

Easily adjust camera to best viewing angle

3D Comb Filter, Deinterlace, PIP Function

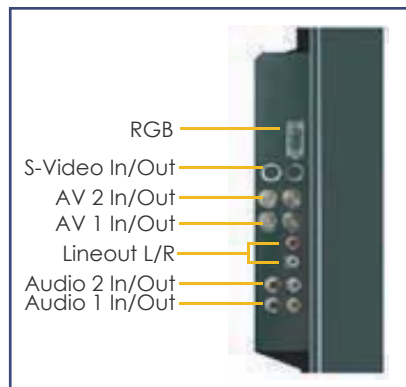
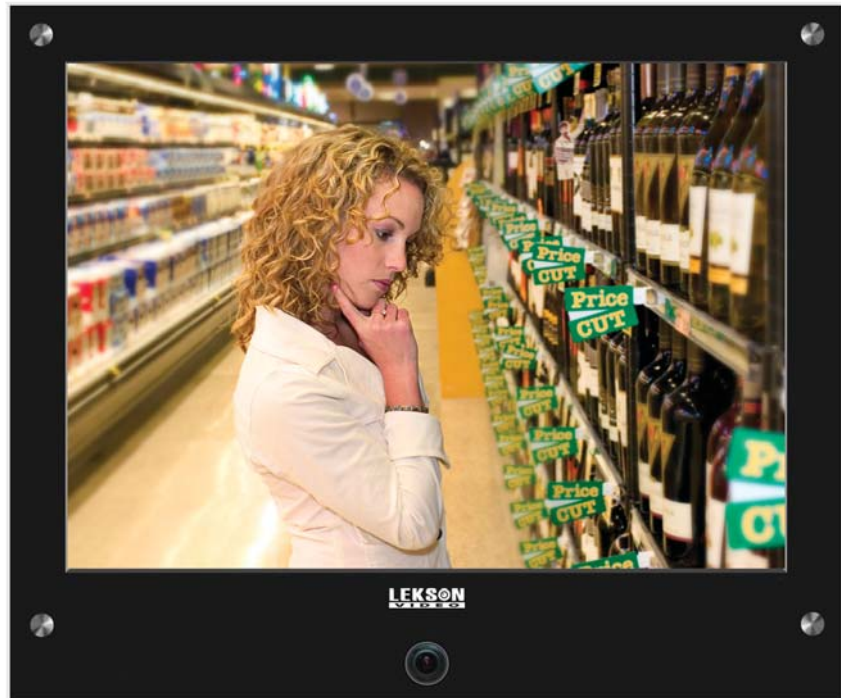
Stylish design

Light sensor conserves energy by putting monitor into sleep mode when the lights go out

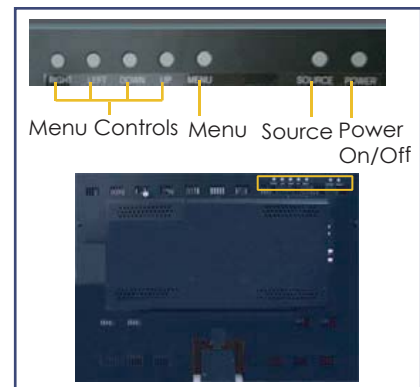
Built-in surveillance camera continues to monitor no matter what mode the monitor is in

Internal 2W speakers

26" Public View Monitor



Side View (Connectors)



Rear View (Controls)

**General**

Display Type	LCD TFT (Thin-Film Transistor)
Size	26 inches
Signal system	525lines NTSC; 625lines PAL
Aspect Ratio	16 : 9

Panel

Pixel Pitch	0.4215mm
Viewing Angle (Wide) (CR 5)	Horizontal: +/-88 (Left/Right), Vertical: +/-88 (Up/Down)
Display Colors	16.777million colors(8bit)
Contrast	800:1(Typical)
Brightness	500cd/m ²
Color Temperature	10000°K
Response Time	20ms(typical)
Scanning Frequency	Horizontal: 39.45 ~ 41.10KHz, Vertical: 48 ~ 52Hz
Lamp Life Time	60,000Hrs(Min)
Display Resolution	1366 x 768 (WXGA)
Surface Treatment	Hard coating(3H), Anti-glare

Connections

VGA Input	RGB Analog 0.7Vp-p, 15-pin D-sub Connector
Audio In/Out	Mono Jack(2)
Speaker	Internal Type 8Ω 2W (2) (Option)
Video Inputs	Composite Video BNC, S-Video, VGA

Functions

Auto Sync Format Detection	NTSC/PAL/SECAM
OSD Language	6 Languages (English, Francis, Italian, Germany, Spanish, Portuguese)
Other Functions	3D Comb Filter, De-interlace
User Controls	Auto Adjust, Brightness, Contrast, Color, Over Scan, Volume, Language, Auto Power, Power latching, Key Lock, Motion Detection

Electrical

Input Voltage	24VDC, 5.42A
Input Signal	0.5 to 2.0Vp-p
Input/Output Impedances	75Ω
Power Consumption	120 Watts (Includes Speaker)
Power Management	VESA DPMS Compatible

Environment

Operating temperature	32°F-104°F (0°C~40°C)
-----------------------	-----------------------

WDR Camera

Input Sensor	Sony 1/3" WDR High Resolution Color CCD
Resolution	470 TV Lines
Signal to Noise Ratio	Greater than 48dB (AGC Off)
Sensitivity	0.5Lux at F1.2 Lens
Lens	3.8mm - 9.5mm Vari-Focal (F1.2)

Varifocal Camera Optional - PLM260STV

Input Sensor	1/3in. Interline Transfer type color CCD (SONY) Day & Night
Resolution	540 TV Lines
Signal-to-noise Ratio	Greater than 50dB (AGC off)
Sensitivity	0.3Lux, F1.2 Lens
Lens	3.8mm-9.5mm Vari-Focal (F1.2)

*Design and specifications are subject to change without notice

Lekson Video

3214 North University Ave. #528, Provo, UT 84604

Tel: 1-888-LEKSON1 | Fax: (801) 227-7819

WWW.LEKSONVIDEO.COM

Special Features include:

Ultra Bright LCD Screen

Built-in WDR Camera with 1/3" Sony Input Sensor High Resolution Color CCD (Varifocal Camera Optional)

Easily adjust camera to best viewing angle

3D Comb Filter, Deinterlace, PIP Function

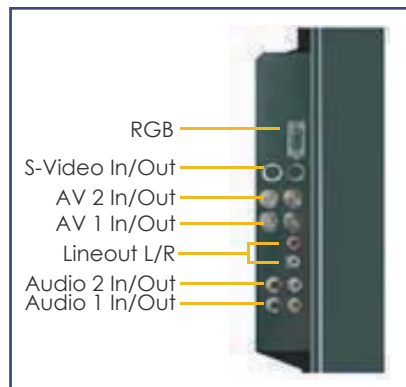
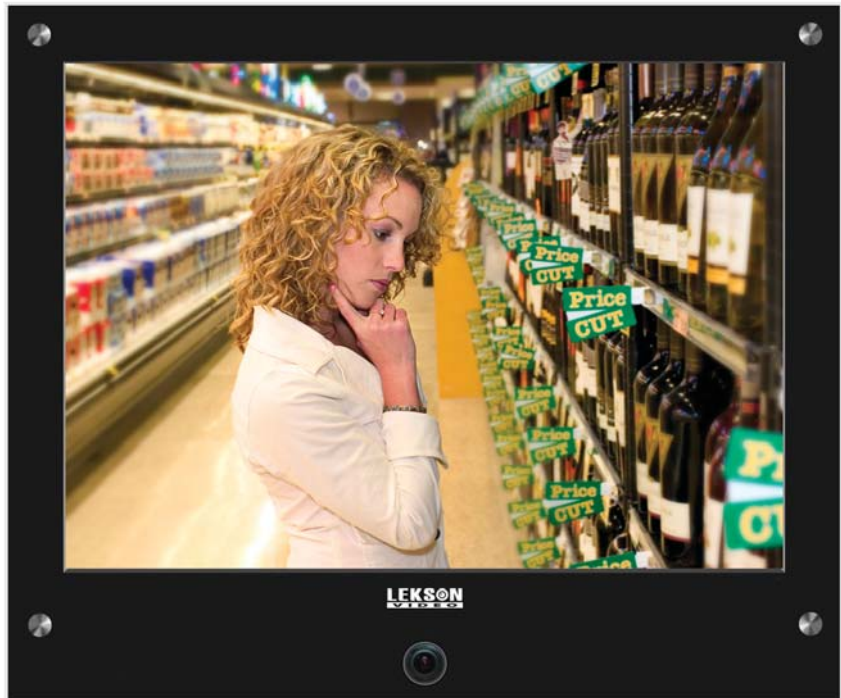
Stylish design

Light sensor conserves energy by putting monitor into sleep mode when the lights go out

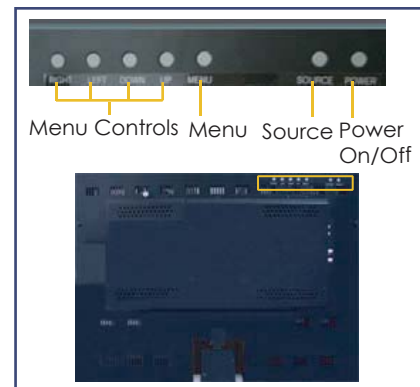
Built-in surveillance camera continues to monitor no matter what mode the monitor is in

Internal 2W speakers

32" Public View Monitor



Side View (Connectors)



Rear View (Controls)

**General**

Display Type	LCD TFT (Thin-Film Transistor)
Size	32 inches
Signal system	525lines NTSC; 625lines PAL
Aspect Ratio	16 : 9

Panel

Pixel Pitch	0.170mm x 0.510mm x RGB
Viewing Angle (Wide) (CR 5)	Horizontal: +/-89 (Left/Right), Vertical: +/-89 (Up/Down)
Display Colors	16.777million colors(8bit)
Contrast	1600:1(Typical)
Brightness	500cd/m ²
Color Temperature	10000°K
Response Time	18ms(typical)
Scanning Frequency	Horizontal: 45-50 Khz, Vertical: 47-63 Hz
Lamp Life Time	60,000Hrs(Min)
Display Resolution	1366 x 768 (WXGA)
Surface Treatment	Hard coating(3H), Anti-glare

Connections

VGA Input	RGB Analog 0.7Vp-p, 15-pin D-sub Connector
Audio In/Out	Mono Jack(2)
Speaker	Internal Type 8Ω 2W (2) (Option)
Video Inputs	Composite Video BNC, S-Video, VGA

Functions

Auto Sync Format Detection	NTSC/PAL/SECAM
OSD Language	6 Languages (English, Francis, Italian, Germany, Spanish, Portuguese)
Other Functions	3D Comb Filter, De-interlace
User Controls	Auto Adjust, Brightness, Contrast, Color, Over Scan, Volume, Language,Auto Power, Power latching, Key Lock, Motion Detection

Electrical

Input Voltage	SMPS (AC 100 ~240V, 50/60Hz MAX 2.5A)
Input Signal	0.5 to 2.0Vp-p
Input/Output Impedances	75Ω
Power Consumption	150 Watts (Includes Speaker)
Power Management	VESA DPMS Compatible

Environment

Operating temperature	32°F-104°F (0°C~40°C)
-----------------------	-----------------------

WDR Camera

Input Sensor	Sony 1/3" WDR High Resolution Color CCD
Resolution	470 TV Lines
Signal to Noise Ratio	Greater than 48dB (AGC Off)
Sensitivity	0.5Lux at F1.2 Lens
Lens	3.8mm - 9.5mm Vari-Focal (F1.2)

Varifocal Camera Optional - PLM320STV

Input Sensor	1/3in. Interline Transfer type color CCD (SONY) Day & Night
Resolution	540 TV Lines
Signal-to-noise Ratio	Greater than 50dB (AGC off)
Sensitivity	0.3Lux,F1.2 Lens
Lens	3.8mm-9.5mm Vari-Focal (F1.2)

*Design and specifications are subject to change without notice

Lekson Video

3214 North University Ave. #528, Provo, UT 84604

Tel: 1-888-LEKSON1 | Fax: (801) 227-7819

WWW.LEKSONVIDEO.COM

Special Features include:

Ultra Bright LCD Screen

Built-in WDR Camera with 1/3" Sony Input Sensor High Resolution Color CCD (Varifocal Camera Optional)

Easily adjust camera to best viewing angle

3D Comb Filter, Deinterlace, PIP Function

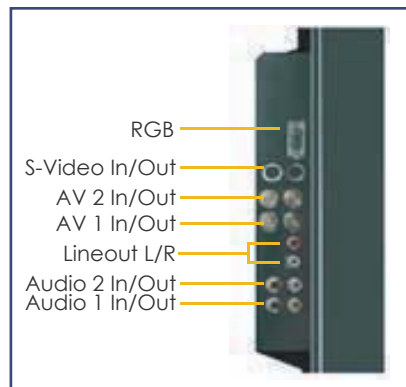
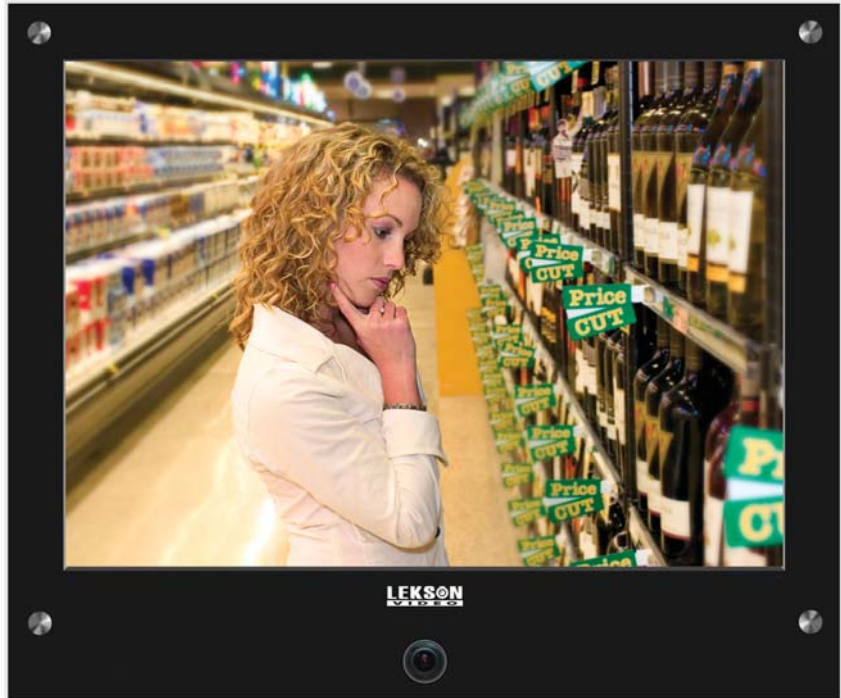
Stylish design

Light sensor conserves energy by putting monitor into sleep mode when the lights go out

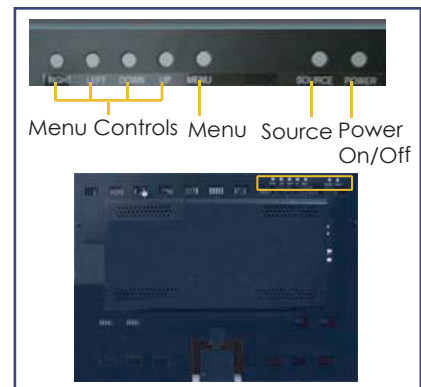
Built-in surveillance camera continues to monitor no matter what mode the monitor is in

Internal 2W speakers

37" Public View Monitor



Side View (Connectors)



Rear View (Controls)

**General**

Display Type	LCD TFT (Thin-Film Transistor)
Size	37 inches
Signal system	525lines NTSC; 625lines PAL
Aspect Ratio	16 : 9

Panel

Pixel Pitch	0.200mm x 0.600mm x RGB
Viewing Angle (Wide) (CR 5)	Horizontal: +/-89 (Left/Right), Vertical: +/-89 (Up/Down)
Display Colors	16.777million colors(8bit)
Contrast	1600:1(Typical)
Brightness	500cd/m ²
Color Temperature	10000°K
Response Time	18ms(typical)
Scanning Frequency	Horizontal: 45-50 Khz, Vertical: 47-63 Hz
Lamp Life Time	60,000Hrs(Min)
Display Resolution	1366 x 768 (WXGA)
Surface Treatment	Hard coating(3H), Anti-glare

Connections

VGA Input	RGB Analog 0.7Vp-p, 15-pin D-sub Connector
Audio In/Out	Mono Jack(2)
Speaker	Internal Type 8Ω 2W (2) (Option)
Video Inputs	Composite Video BNC, S-Video, VGA

Functions

Auto Sync Format Detection	NTSC/PAL/SECAM
OSD Language	6 Languages (English, Francis, Italian, Germany, Spanish, Portuguese)
Other Functions	3D Comb Filter, De-interlace
User Controls	Auto Adjust, Brightness, Contrast, Color, Over Scan, Volume, Language,Auto Power, Power latching, Key Lock, Motion Detection

Electrical

Input Voltage	SMPS (AC 100 ~240V, 50/60Hz MAX 2.5A)
Input Signal	0.5 to 2.0Vp-p
Input/Output Impedances	75Ω
Power Consumption	150 Watts (Includes Speaker)
Power Management	VESA DPMS Compatible

Environment

Operating temperature	32°F-104°F (0°C~40°C)
-----------------------	-----------------------

WDR Camera

Input Sensor	Sony 1/3" WDR High Resolution Color CCD
Resolution	470 TV Lines
Signal to Noise Ratio	Greater than 48dB (AGC Off)
Sensitivity	0.5Lux at F1.2 Lens
Lens	3.8mm - 9.5mm Vari-Focal (F1.2)

Varifocal Camera Optional - PLM370STV

Input Sensor	1/3in. Interline Transfer type color CCD (SONY) Day & Night
Resolution	540 TV Lines
Signal-to-noise Ratio	Greater than 50dB (AGC off)
Sensitivity	0.3Lux,F1.2 Lens
Lens	3.8mm-9.5mm Vari-Focal (F1.2)

*Design and specifications are subject to change without notice

Lekson Video

3214 North University Ave. #528, Provo, UT 84604

Tel: 1-888-LEKSON1 | Fax: (801) 227-7819

WWW.LEKSONVIDEO.COM

Special Features include:

Ultra Bright LCD Screen

Built-in WDR Camera with 1/3" Sony Input Sensor High Resolution Color CCD (Varifocal Camera Optional)

Easily adjust camera to best viewing angle

3D Comb Filter, Deinterlace, PIP Function

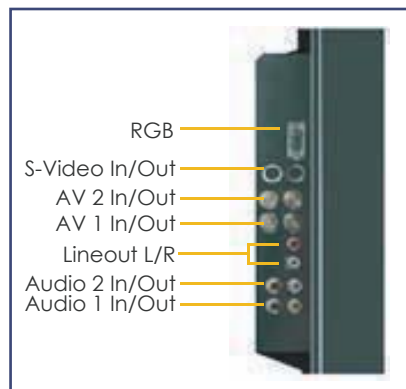
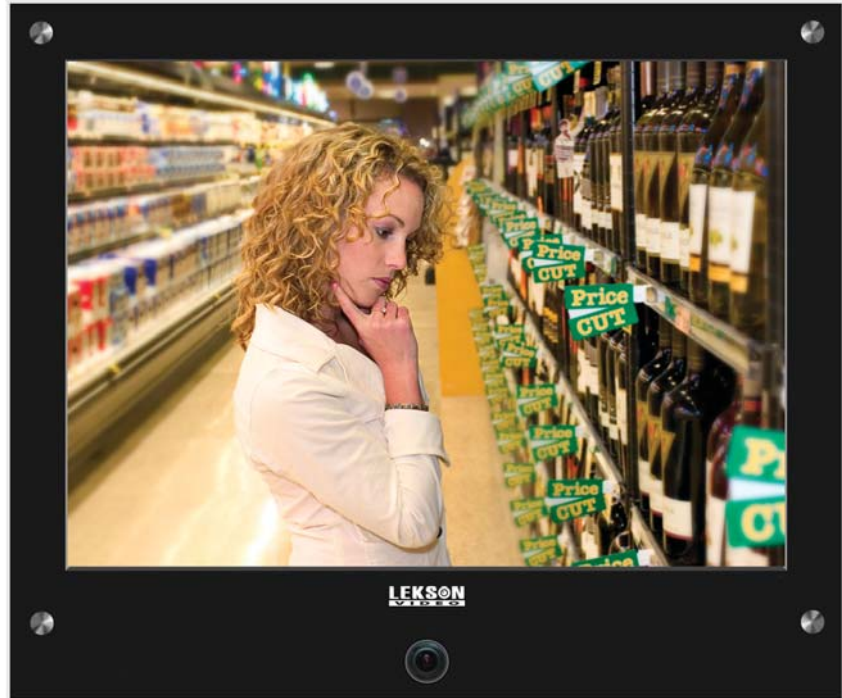
Stylish design

Light sensor conserves energy by putting monitor into sleep mode when the lights go out

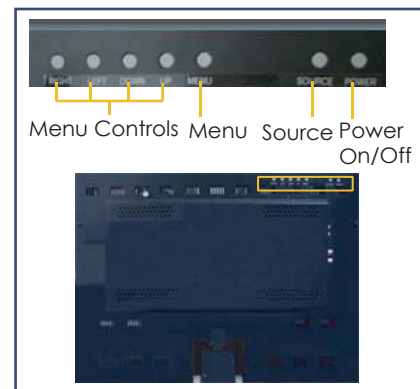
Built-in surveillance camera continues to monitor no matter what mode the monitor is in

Internal 2W speakers

42" Public View Monitor



Side View (Connectors)



Rear View (Controls)

**General**

Display Type	LCD TFT (Thin-Film Transistor)
Size	42 inches
Signal system	525lines NTSC; 625lines PAL
Aspect Ratio	16 : 9

Panel

Pixel Pitch	0.227mm x 0.681mm x RGB
Viewing Angle (Wide) (CR 5)	Horizontal: +/-89 (Left/Right), Vertical: +/-89 (Up/Down)
Display Colors	16.777million colors(8bit)
Contrast	800:1 (Typical)
Brightness	500cd/m ²
Color Temperature	10000°K
Response Time	18ms(typical)
Scanning Frequency	Horizontal: 45-50 Khz, Vertical: 47-63 Hz
Lamp Life Time	60,000Hrs(Min)
Display Resolution	1366 x 768 (WXGA)
Surface Treatment	Hard coating(3H), Anti-glare

Connections

VGA Input	RGB Analog 0.7Vp-p, 15-pin D-sub Connector
Audio In/Out	Mono Jack(2)
Speaker	Internal Type 8Ω 2W (2) (Option)
Video Inputs	Composite Video BNC, S-Video, VGA

Functions

Auto Sync Format Detection	NTSC/PAL/SECAM
OSD Language	6 Languages (English, Francis, Italian, Germany, Spanish, Portuguese)
Other Functions	3D Comb Filter, De-interlace
User Controls	Auto Adjust, Brightness, Contrast, Color, Over Scan, Volume, Language, Auto Power, Power latching, Key Lock, Motion Detection

Electrical

Input Voltage	SMPS (AC 100 ~240V, 50/60Hz MAX 2.5A)
Input Signal	0.5 to 2.0Vp-p
Input/Output Impedances	75Ω
Power Consumption	200Watts, Standby 5Watts (idle: 5W)VESA DPMS Compatible
Power Management	VESA DPMS Compatible

Environment

Operating temperature	32°F-104°F (0°C~40°C)
-----------------------	-----------------------

WDR Camera

Input Sensor	Sony 1/3" WDR High Resolution Color CCD
Resolution	470 TV Lines
Signal to Noise Ratio	Greater than 48dB (AGC Off)
Sensitivity	0.5Lux at F1.2 Lens
Lens	3.8mm - 9.5mm Vari-Focal (F1.2)

Varifocal Camera Optional - PLM420STV

Input Sensor	1/3in. Interline Transfer type color CCD (SONY) Day & Night
Resolution	540 TV Lines
Signal-to-noise Ratio	Greater than 50dB (AGC off)
Sensitivity	0.3Lux, F1.2 Lens
Lens	3.8mm-9.5mm Vari-Focal (F1.2)

*Design and specifications are subject to change without notice

Lekson Video

3214 North University Ave. #528, Provo, UT 84604

Tel: 1-888-LEKSON1 | Fax: (801) 227-7819

WWW.LEKSONVIDEO.COM

Lekson Video

Terms and Conditions

1. Sales and Payment

a. Sales and Payment Terms: Terms are 30 days. Past due accounts are subject to the maximum legal rate of interest or 1.5% per month, whichever is less.

b. Forms of Payment: Lekson Video requires all remittances must be in a single payment for the full amount of the invoice submitted with the following requirements: 1) Wire or electronic funds transfer, 2) Buyer company check, 3) Irrevocable letter of credit, 4) Credit Card payment (American Express, Visa, MasterCard, and Discover Card are accepted). ALL INVOICES MUST BE PAYED BEFORE ORDER IS SHIPPED UNLESS BUYER HAS BEEN APPROVED CREDIT TERMS BY LEKSON VIDEO.

c. Prices: Products and services will be invoiced at prices in effect as of the day shipped which is the same as the invoice date. Prices are not necessarily valid for other current and future sales and Lekson Video reserves the right to change or withdraw prices for the Products or services it offers for sale without prior notice. Any and all invoice errors must be disputed within 15 days of invoice date and are subject to correction by Lekson Video. Prices do not include any present or future federal, state, provincial, local or other government taxes, duties, and tariffs applicable to the sale, transportation, or use of products purchased, all of which shall be paid by the Buyer. International sales are also subject to all applicable taxes, tariffs, transportation and import duties, licenses, and fees which shall also be paid by the Buyer.

d. Credit: Lekson Video reserves the right to cancel Buyer's credit at any time.

e. Buyer's solvency: Buyer's order shall constitute a representation that the buyer is solvent. If there is a reasonable belief that 1) the Buyer is no longer solvent, 2) Buyer files for bankruptcy, 3) there is an appointment of trustee or receiver for Buyer, or 4) execution of Buyer by creditors Lekson Video reserves the right to cancel an order or require partial or full payment.

f. Security Interest: Lekson Video retains a security interest in those Products for which amounts remain unpaid as of the delivery date. Any such security interest shall be satisfied by payment in full of the invoiced amount.

2. Delivery of Products

a. Delivery: Lekson Video shall have the right to make partial shipments unless specifically stated otherwise on Buyer's purchase order. Partial shipments will be billed on the date shipped and payment is therefore subject to the terms of payment referenced herein. All shipments will be F.O.B. Shipping Point, and the title and risk of loss will pass to Buyer when accepted for shipment by the freight company. Freight charges are pre-paid by Lekson Video and will be invoiced to the Buyer. Buyer must file claims for damaged items promptly with the freight carrier.

b. Force Majeure: Lekson Video shall use all reasonable commercial efforts to deliver all products ordered by Buyer as soon as reasonably practicable. Lekson Video reserves the right to delay or terminate delivery upon oral or written notice to Buyer shipments that are delayed or interrupted by causes beyond the reasonable control of Lekson Video such as but not limited to fire, flood, labor disturbances, riots, accidents, theft, Government Act or regulation, outbreak of hostilities, or trade dispute.

c. Shortages: Buyer must notify Lekson Video of shipments that contain shortages within 7 days of receipt of shipment. At Lekson Video's option, shipment will be fulfilled or a credit will be given to Buyer within 30 days of claim receipt.

3. Limited Warranty

a. Lekson Video warrants that its products, at the time of shipment by Lekson Video, are free from defect in material or workmanship for the respective period set forth in Lekson Video's Limited Warranty policy available at www.leksonvideo.com.

b. The warranty extends only to Buyer and does not extend to any other party.

c. To assure conformance with operating limitations, Buyer should refer to the applicable product user manual.

d. The warranty is void 1) if the Product is not operated in conformance with installation, environmental, mechanical, or electrical requirements, or within thermal stress limits, or 2) to the extent that any malfunction is the result of misuse, abuse, improper installation or application, alteration, accident, or negligence in use, storage, transportation, or handling, or if the original identification markings on the Product have been removed, defaced, or altered.

e. Lekson Video's warranty is subject to the Buyer's prompt claim and inspection of the Product claimed to be defective. Lekson Video shall not be responsible of the packaging, inspection, labor, or shipping costs in connection with the return of Product.

f. Lekson Video reserves the right to replace, repair, or credit the cost of returned Product that is under warranty. Lekson Video shall replace Product with new or remanufactured product. The repaired or replaced product is then warranted under the terms of the warranty for the balance of the term of the warranty or for 90 days whichever is longer.

g. For any warranty claim Buyer should contact customer service and request authorization to return the product.

h. The preceding subsections of this "Limited Warranty" section set forth the exclusive remedies for claims based on any defect, failure, malfunction, or any other performance or non-performance of any product, whether the claim is in contract, indemnity, warranty, tort (including negligence), strict liability or otherwise, and however instituted. In no event shall Lekson Video be liable for special, indirect, incidental, or consequential

damages, loss of anticipated profit, or other economic loss or for any damages arising in tort whether by reason of strict liability, negligence, or otherwise regardless of whether it has been apprised of the possibility of such.

i. NO OTHER OR FURTHER WARRANTY, EXPRESS OR IMPLIED, INCLUDING ANY WARRANTY OF FITNESS FOR A PARTICULAR PURPOSE OR WARRANTY OF MERCHANTABILITY.

k. Lekson Video will repair or replace all products within the warranty period of 3 years from the date of shipment except for CRT Monitors, LCD Monitors, PVM Monitors, and DVR Hard Drives which have a warranty period of one year from the date of shipment.

4. Returns

a. RMA Approval: No returns will be accepted by Lekson Video without the approval of Customer Service. Contact the Lekson Video Customer Service center and request authorization to return the product. Upon approval from the Customer Service center Buyer will be given a Return Merchandise Authorization (RMA) number. RMA number must be written on the top of the box product is returned in. Requests for returns must be placed 60 days from the original date of shipment and returned products must be received within 30 days of RMA. All returns for credit are subject to a 20% restocking charge and must be in new condition. Buyer must use credits within 1 year of date of issue before they are forfeited.

b. Advanced Replacement: Lekson Video will advance replace select product that has failed upon initial install (bad-out-of-box). Customer Service must be contacted for an Advance Replacement Authorization. Upon approval, an RMA number will be issued for the equipment to be returned. All replacements will be invoiced at shipment and credited upon receipt of the defective product. Invoices will remain outstanding if the returned product does not qualify under replacement terms.

5. Patents

Lekson Video warrants that product furnished hereunder shall be delivered free of any rightful claim of any third party for infringement of any United States patent. If the Product or any part thereof, becomes, or in the opinion of Lekson Video may become, the subject of any claim, suit, or proceeding for infringement of, or in the event of an adjudication that such Product or part infringes, any U.S. patent, Lekson Video may, at its option and its expense and contingent upon Buyer not taking any position adverse to Lekson Video in connection with such claim, Lekson Video shall defend, or may settle at its expense, any suit or proceeding against Buyer so far as based on a claimed infringement which would result in a breach of the warranty stated in this section. In case any Product or part thereof is in such suit held to constitute such an infringement, Lekson Video shall, at its expense and option, either procure for the Buyer the right to continue using said product or part, or replace same with a non-infringing product or part, or modify same so it becomes non-infringing, or remove the product and refund the purchase price. The foregoing states the entire liability of Lekson Video for patent infringement by the products or any part thereof. This does not apply to any product or part specified by Buyer or manufactured to Buyer's design, or to the use of any product furnished hereunder in conjunction with any other product in a combination not furnished by Lekson Video as a part of this transaction. As to any such product or part, or use in such combination, Lekson Video assumes no liability whatsoever for product infringement and Buyer will hold Lekson Video harmless against any infringement claims arising therefrom.

6. General

a. Oral statements, warranties, or representations made by any agent or employee or representative of Lekson Video are not authorized by Lekson Video and shall be of no force or effect. These terms and conditions of sale are the final, complete, and exclusive statement of the terms of agreement between Lekson Video and Buyer.

b. LEKSON VIDEO DOES NOT MAKE ANY CLAIMS OR WARRANTIES OF ANY KIND REGARDING ANY PRODUCT'S POTENTIAL, ABILITY, OR EFFECTIVENESS TO DETECT, MINIMIZE, OR IN ANYWAY PREVENT DEATH, PERSONAL INJURY, PROPERTY DAMAGE OR LOSS OF ANY KIND WHATSOEVER, LEKSON VIDEO IS NOT RESPONSIBLE FOR ANY DEATH, PERSONAL INJURY, DAMAGE OR LOSS OR THEFT RELATED TO THE PRODUCT OR ITS USE OR FOR ANY HARM, WHETHER PHYSICAL OR MENTAL RELATED THERETO. LEKSON VIDEO DOES NOT REPRESENT THAT THE PRODUCT MAY NOT BE COMPROMISED AND OR CIRCUMVENTED, OR THAT THE PRODUCT WILL PREVENT DEATH, PERSONAL INJURY AND/OR BODILY INJURY, AND/OR DAMAGE TO PROPERTY OF PURCHASER OR OTHERS RESULTING FROM BURGLARY, ROBBERY, FIRE OR OTHERWISE, OR THAT PRODUCT WILL IN ALL CASES PROVIDE ADEQUATE WARNING OR PROTECTION. BUYER UNDERSTANDS THAT A PROPERLY INSTALLED AND MAINTAINED PRODUCT MAY ONLY REDUCE THE RISK OF EVENTS SUCH AS BURGLARY, ROBBERY, OR SIMILAR EVENTS WITHOUT WARNING, BUT IT IS NOT INSURANCE OR A GUARANTEE THAT SUCH EVENTS WILL NOT OCCUR OR THAT THERE WILL BE NO DEATH, PERSONAL INJURY AND/OR PROPERTY DAMAGE AS A RESULT. LEKSON VIDEO SHALL NOT BE LIABLE FOR ANY DEATH, PERSONAL INJURY, PROPERTY DAMAGE OR LOSS OF ANY KIND WHATSOEVER TO PURCHASER OR OTHERS, WHETHER DIRECTLY, INDIRECTLY, INCIDENTALY, CONSEQUENTIALLY OR OTHERWISE CAUSED BY THE OPERATION, NONOPERATION, FUNCTIONING, MALFUNCTIONING OR MISUSE OF THE PRODUCT.

7. Design Changes

Lekson Video reserves the right to make changes in the design of any of its Products without incurring any obligation to notify Buyer or to make the same change to units previously purchased.

8. Export Laws

Buyer agrees to comply with all applicable export laws, assurances, codes and license requirements including Buyer's responsibility for the payment of any relevant taxes or duties, etc.



Business Credit Application

LEKSON VIDEO

3214 North University Avenue #528, Provo, UT 84604 U.S.A.

P: (801) 227-7818 F: (801) 227-7819

After completing the application, please fax to Lekson Video at (801) 227-7819.

Company Information

Name:	D.B.A. (If available):
Legal Form Under Which Business Operates:	
Corporation <input type="checkbox"/> Partnership <input type="checkbox"/> Proprietorship <input type="checkbox"/> Limited Liability Corporation <input type="checkbox"/> S-Corporation <input type="checkbox"/>	
If Division/Subsidiary, Name of Parent Company:	In Business Since:
D&B Number:	
E.I.N.:	
Sales Tax License Number (If you do not provide this number, we are required to charge sales tax):	
In Business Since:	

Owner/ Officer Information 1

Last:	First:	Middle Initial:	Title
% of ownership:			Tax I.D. Number
Address:			
City:	State:	ZIP:	Phone:

Owner/ Officer Information 2

Last:	First:	Middle Initial:	Title
% of ownership:			Tax I.D. Number
Address:			
City:	State:	ZIP:	Phone:

Owner/ Officer Information 3

Last:	First:	Middle Initial:	Title
% of ownership:			Tax I.D. Number
Address:			
City:	State:	ZIP:	Phone:

Bank References

Institution Name:	Contact Name:	Account Opened Since:	
Checking Account #:	Savings Account #:	Loan Account #:	Loan Balance:
Address:			
Phone:	Fax:		

Trade References

Company Name:	Company Name:	Company Name:
Contact Name:	Contact Name:	Contact Name:
Address:	Address:	Address:
Phone:	Phone:	Phone:
Fax:	Fax:	Fax:
Account Opened Since:	Account Opened Since:	Account Opened Since:
Credit Limit:	Credit Limit:	Credit Limit:
Current Balance:	Current Balance:	Current Balance:

WE ESTIMATE OUR ANNUAL PURCHASES FROM LEKSON VIDEO WILL BE \$ _____

WE WILL NEED A CREDIT LINE OF \$ _____

I hereby certify that the information contained herein is complete and accurate. This information has been furnished with the understanding that it is to be used to determine the amount and conditions of the credit to be extended. Furthermore, I hereby authorize the financial institutions listed in this credit application to release necessary information to the company for which credit is being applied for in order to verify the information contained herein.

*Signature

Date

*Authorized signatory must be an Officer, Partner, or Sole Proprietor.

**If business is a sole proprietorship or a partnership, social security number must be provided



www.leksonvideo.com

FAX ORDER TO 1-801-227-7819
 FOR CUSTOMER SERVICE CALL
 1-888-LEKSON1

Customer Order Form

LEKSON VIDEO
 3214 North University Ave #528
 Provo, Utah 84604

DATE					
CUSTOMER PO	Order Placed By:	Terms	Ship By	Lekson Order #	

Bill To: (if different than shipping)

Name			
Company			
Address			
City	State	Zip	
Country			
Phone			
Email			

Ship To:

Name			
Company			
Address			
City	State	Zip	
Country			
Phone			
Email			

Above information **MUST** match the address on your credit card when using a credit card.

Enter Your Items: (copy this form for additional items)

Item Number	Product Name / Description	Quantity	Unit Price	Total Price

Shipping Method: (circle one) 1Day 2Day 3Day Ground

If Shipping on own account please provide:

Shipping Company: _____
 Account Number: _____

Merchandise Total	
Shipping Charges	
Sales Tax	
Total Amount	

Payment Information

Lekson Account Number: _____ (New customers are required to fill out credit application to receive Lekson account)
 Check or Money Order#: _____
 Credit Card: (circle one) American Express Mastercard Visa Discover
 Card# _____
 Exp. Date: (mm/yy) _____
 3 or 4 Digit Security Code _____